



Martin

SYNCHRONOUS PRODUCTS

• MPC • High HP HTS™ • HTS® • TIMING PULLEYS

With our vast North American network of facilities, each with warehouses loaded with stock product and machine shops for quick alterations, we have unique synchronous product capabilities:

• **4 distinct product lines to choose from**

- MPC (highest HP capacity)
- High HP HTS
- HTS
- Timing Pulleys

• **Ability and willingness to stage product locally for scheduled releases**

• **MTO capability**

- Special Materials
 - * Ductile Iron
 - * Stainless Steel
 - * Plastics
- Special Bores
- * Steel
- * Aluminum
- * Sintered Metal
- Special Configurations

• **Belt Compatibility**

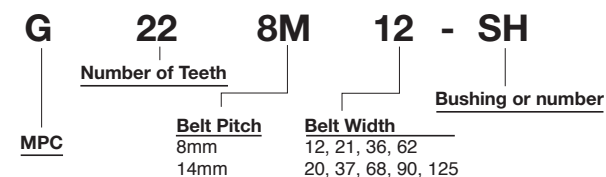
- **MPC Sprockets:** Poly Chain® GT2® & Falcon Pd™
- **High HP HTS:** Hawk Pd™, Panther®, QT Power Chain™ Eliminator
- **HTS:** RPP™, RPP+™, Hawk Pd™, HTD®
- **Timing Pulleys:** Trapezoidal belts (XL, L, H, XH)



MPC Synchronous Sprockets

Introducing our newest synchronous sprocket. Whether it's Poly Chain GT2® or Falcon Pd™ we will make the iron to complete your drives. The addition of our "G" sprocket line makes *Martin* your one stop shop for all your synchronous sprocket needs. Match your sprocket to your favorite belt.

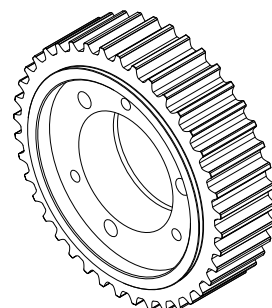
Tooth profile compatible with: Polychain GT2 and Falcon Pd tooth belts.



"G" MPC Synchronous Sprockets runs with Poly Chain GT2 and Falcon Pd tooth belts.

"G" MPC Synchronous Sprockets are designed to run with latest design, higher horsepower belts.

- Available in 8mm and 14mm pitches
- Belt widths: 12mm, 21mm, 36mm, 62mm (8mm pitch) 20mm, 37mm, 68mm, 90mm, 125mm (14mm pitch)



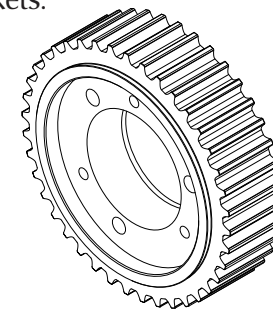
Available in QD, TB or other special adapters. Special diameters and widths also available.

Poly Chain GT2 and Falcon Pd are registered trademarks of Goodyear.

High HP HTS™ Synchronous Sprockets

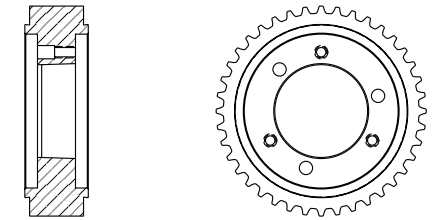
Another recent addition to *Martin's* synchronous line is the High HP HTS Sprocket. These sprockets are designed to run with today's highest horsepower RPP profile belts.

High HP HTS Synchronous Sprockets allow you more flexibility in your selection criteria. The expanded line allows you to fit the application with the most cost effective sprockets.

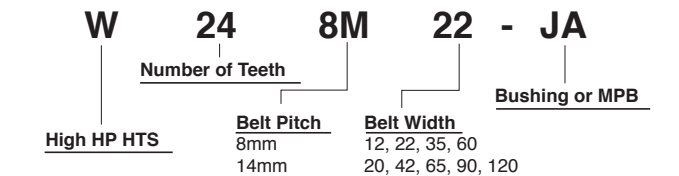


Available in QD, TB or MPB styles from stock.

Typical Part Number: W248M22-JA



Tooth profile compatible with: Hawk Pd, Panther, QT Power Chain belts.



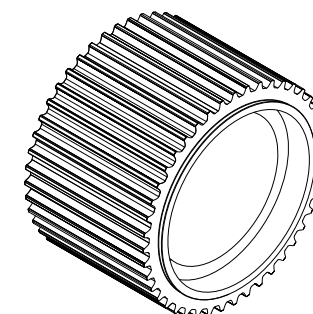
"W" High HP HTS Sprockets (RPP Tooth Profile) Run with Hawk Pd, Panther, QT Power Chain belts.

"W" High HP HTS Sprockets are designed to run with latest design, higher horsepower belts.

- Available in 8mm and 14mm pitches
- Belt widths: 12mm, 22mm, 35mm, 60mm (8mm pitch) 20mm, 42mm, 65mm, 90mm, 120mm (14mm pitch)

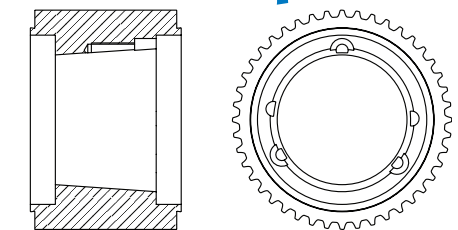
HTS® (High Torque Synchronous) Sprockets

Martin's standard duty synchronous sprockets are manufactured in various sizes, dimensions and capacities to meet industry requirements. This cleaner, more efficient drive is popular in various industries and handles a wide range of loads, speeds, and demanding applications.

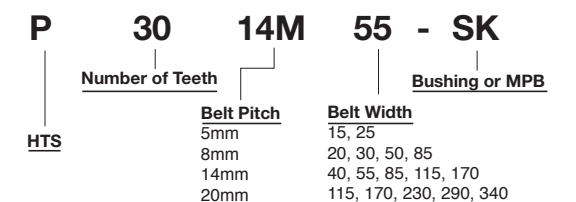


Available in QD, TB or MPB styles from stock.

Typical Part Number: P3014M55-SK



Tooth profile compatible with: Hawk Pd, RPP, RPP+, HTD belts.



"P" HTS Sprockets (RPP Tooth Profile) - Runs with RPP, RPP+, Hawk Pd, & HTD belts.

"P" HTS Sprockets are designed to run with fiberglass corded belts.

- Available in 5mm, 8mm, 14mm, 20mm pitches
- Belt widths: 15mm, 25mm (5mm pitch) 20mm, 30mm, 50mm, 85mm (8mm pitch) 40mm, 55mm, 85mm, 115mm, 170mm (14mm pitch) 115mm, 170mm, 230mm, 290mm, 340mm (20mm pitch)

Hawk Pd is a registered trademark of Goodyear. QT Power Chain is a registered trademark of TB Wood's. Panther is a registered trademark of Carlisle Power Transmission. HTD is a registered trademark of Gates Rubber Company.

Timing Pulleys



Martin Timing Pulleys, still widely used, and nobody stocks them like *Martin*! Manufactured and stocked in minimum plain bore, Taper Bushed and QD bushed styles depending on size and pitch. *Martin*'s complete Timing Pulley line is made in four stock pitches.

	TB	18	L	100 - JA	
	Number of Teeth				
TB Bushing	Belt Pitch		Belt Width		QD Bushing
If listed, denotes that pulley is bored and drilled to accept TB bushing.	XL Extra Light	1/5"	037 - 3/8"	150 - 1-1/2"	If listed, denotes QD bushing pulley required.
	L Light	3/8"	050 - 1/2"	200 - 2"	
	H Heavy	1/2"	075 - 3/4"	300 - 3"	
	XH Extra Heavy	7/8"	100 - 1"	400 - 4"	Stock Bore No prefix or suffix indicates that pulley is stock bore.

- Runs with timing belts
- Available in XL, L, H, XH pitches
- Belt widths: 037 (XL pitch); 050, 075, 100 (L pitch); 100, 150, 200, 300 (H pitch); 200, 300, 400 (XH pitch)
- Typical Part Numbers: 18L050, 18L050-JA, TB18L050

For more information contact a branch near you:

USA

General Offices

Sales and Manufacturing

Arlington, Texas 817-258-3000 (FAX 817-258-3333)
 Danielsville, PA 610-837-1841 (FAX 610-837-7337)
 Ft. Worth, TX 817-258-3000 (FAX 817-258-3173)
 Montpelier, OH 419-485-5515 (FAX 419-485-3565)
 Sacramento, CA 916-441-7172 (FAX 916-441-4600)
 Scottdale, GA 404-292-8744 (FAX 404-292-7771)

Mini Manufacturing Centers

Boston, MA 508-634-3990 (FAX 508-634-3998)
 Charlotte, NC 704-394-9111 (FAX 704-394-9122)
 Chicago, IL 847-298-8844 (FAX 847-298-2967)

Denver, CO 303-371-8466 (FAX 303-371-7116)

Detroit, MI 734-367-0238 (FAX 734-367-0547)

Houston, TX 713-849-4330 (FAX 713-849-4807)

Kansas City, MO 816-231-5575 (FAX 816-231-1959)

Los Angeles, CA 323-728-8117 (FAX 323-722-7526)

Minneapolis, MN 952-829-0623 (FAX 952-944-9385)

Portland, OR 503-223-7261 (FAX 503-221-0203)

Tampa, FL 813-623-1705 (FAX 813-626-8953)

Wayne, NJ 973-633-5700 (FAX 973-633-7196)

Manufacturing Only

Abilene, TX • Clarksville, TX • Dallas, TX

Mansfield, TX • Paragould, AR

CANADA

Sales and Manufacturing

Martin Sprocket & Gear Canada Inc.

Mississauga, Ontario, Canada

905-670-1991 (FAX 905-670-2110)

Ayr, Ontario, Canada NOB 1EO

519-621-0546 (FAX 519-621-4413)

MEXICO

Sales and Manufacturing

Martin Sprocket & Gear de Mexico, S.A. de C.V.

Toluca, Edo. de México

+52-722-276-0800 (Fax: +52-722-276-0801)