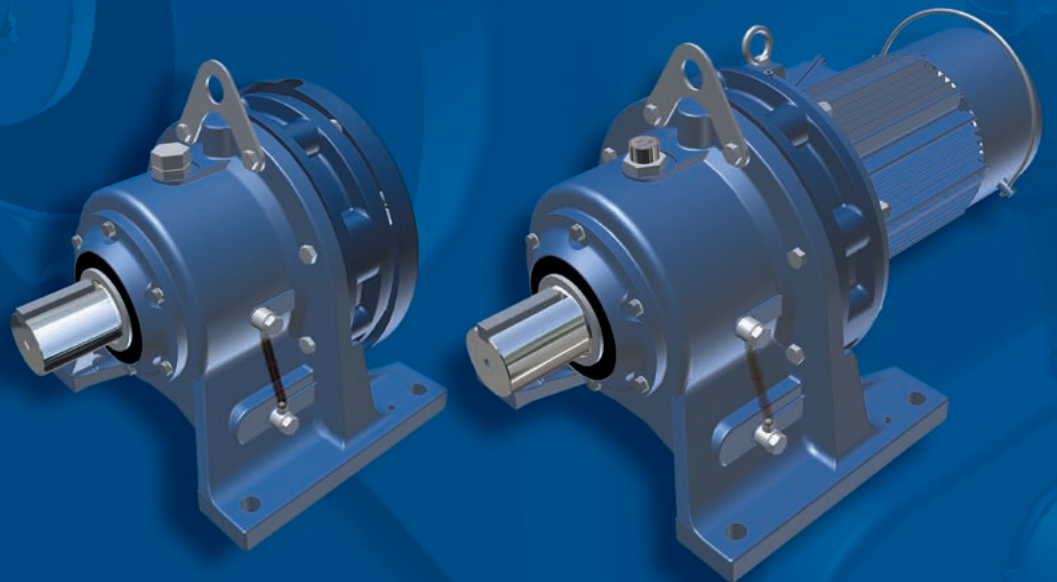


Cyclo[®] 60000



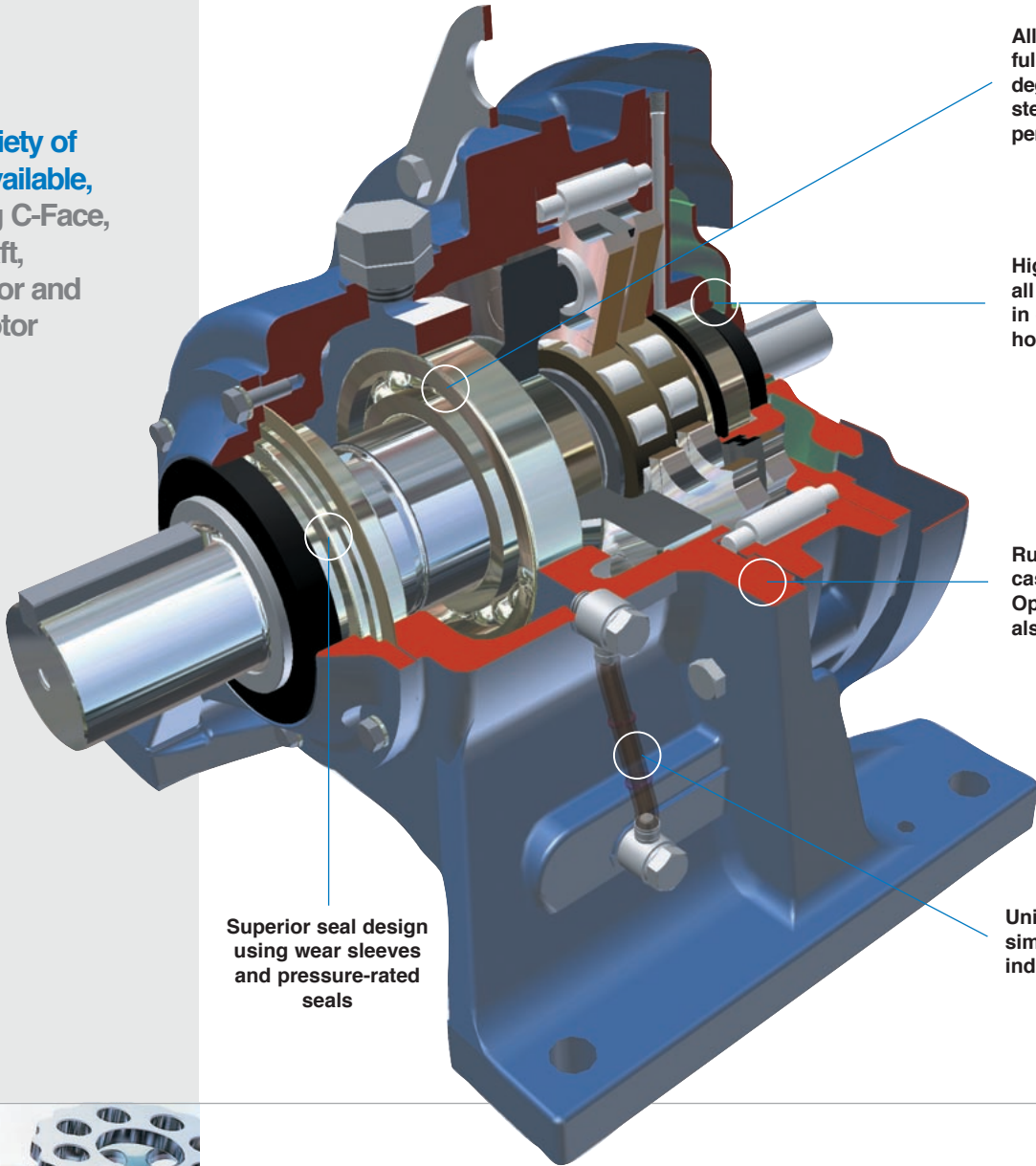
► High Torque Density, High Reliability Cycloidal Speed Reducers and Gearmotors



Cyclo® 6000

High Torque Density, High Reliability Cycloidal Speed Reducers and Gearmotors

► **Wide variety of inputs available, including C-Face, Free-Shaft, Gearmotor and Brakemotor**



All rotating components are fully hardened, vacuum degassed bearing grade steel, for consistent, reliable performance

High power density, all reduction contained in compact ring gear housing

Rugged, shock-resistant cast iron housing. Optional ductile iron also available

Superior seal design using wear sleeves and pressure-rated seals

Unique oil sight gauge for simple, visible lubrication indication

Unmatched Reliability, Exceptional Performance

► Cyclo® speed reducers and gearmotors are designed to withstand shock loads exceeding 500% of their ratings



Product Description

The Sumitomo Cyclo® drive is **unsurpassed by any other inline drive** available in the market today. **Cyclo®'s unique cycloidal design** has advantages superior to speed reducers using common involute tooth gears. Cyclo® components operate in compression, not in shear. Unlike gear teeth with limited contact points, a Cyclo® has two thirds of its reduction components in contact at all times. Cyclo® speed reducers and gearmotors are **designed to withstand shock loads exceeding 500%** of their ratings, and provide exceptional performance, reliability and long life in the most severe applications.

Features & Benefits

- **Highest overload capacity**, exceeding 500%
- **Exceptional life** with a 24 month warranty
- **High efficiency**, even at high reduction ratios
- Versatile, available as inline speed reducer or gearmotor
- Ideal for **severe, high shock** applications
- Optional grease lubrication for **no maintenance**

Specifications

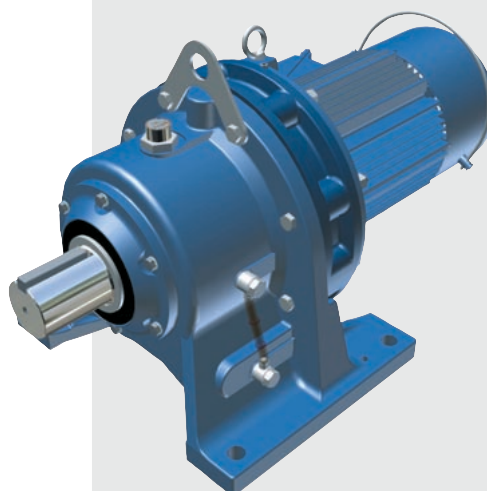
Sizes:	23 models (5lbs to 5000lbs)
Torque Rating:	210 to 603,000 lb in
HP Rating:	.10 to 232 HP
Ratio Range:	3 to 119 (single), 121 to 7569 (double), 8041 to 658,503 (triple)
Mounting:	Foot, Flange, Face Mount
Motor Standards:	NEMA, IEC, JIS, UL, CSA, CE

- ▶ **Sumitomo's Cyclo® 6000 has extremely high torque density** and is available as an inline speed reducer or gearmotor



Reducer

- Simple, Compact Design
- Rugged Forged Output Shaft
- Many Mounting Styles
- C-Face, Shovel Base & Top Mount Options



Gearmotor

- Connection free design
- Rugged forged output shaft
- Direct acting brake option
- Unmatched durability



Applications

- Conveyors
- Food Machinery
- Mixers
- Automotive Plants
- Recycling Machines
- Poultry Plants
- Sawmills and Wood Mills
- Wastewater Treatment
- Steel Mills
- Construction Equipment
- Paper Mills
- Processing Plants



Cyclo® 6000

High Torque Density, High Reliability Cycloidal Speed Reducers and Gearmotors

► **Product Range**
Standard Motor
and Reducer
Combinations

Ratios 3 – 119

Combinations with 1750 RPM input speed

Ratio	3	5	6	8	11	13	15	17	21	25	29	35	43	51	59	71	87	119			
Output Speed RPM (60 Hz)	583	350	292	219	159	135	117	103	83.3	70.0	60.3	50.0	40.7	34.3	29.7	24.6	20.1	14.7			
Motor HP	1/8	1/4	1/3	1/2	3/4	1	1.5	2	3	5	7.5	10	15	20	25	30	40	50	60	75	100

Ratios 11 – 87

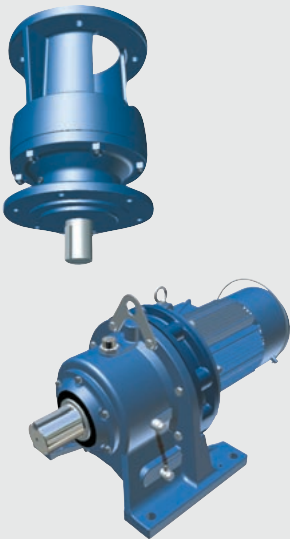
Combinations with 1165 RPM input speed

Ratio	11	15	21	29	43	59	87				
Output Speed RPM (60 Hz)	106	77.7	55.5	40.2	27.1	19.7	13.4				
Motor HP	20	25	30	40	50	60	75	100	125	150	175

Ratios 104 – 7569

Combinations with 1750 RPM input speed

Ratio	104	121	143	165	195	231	273	319	377	473	559	649	731	841	1003	1247	1479	1849	2065	2537	3045	3481	4437	5133	6177	7569
Output Speed RPM (60 Hz)	16.8	14.5	12.2	10.6	8.97	7.58	6.41	5.49	4.64	3.70	3.13	2.70	2.39	2.08	1.74	1.40	1.18	.996	0.847	0.690	0.575	0.503	0.394	0.341	0.283	0.231
Motor HP	1/8	1/4	1/3	1/2	3/4	1	1.5	2	3	5	7.5	10	15	20	25	30	40	50	60							
OUTPUT TORQUE lb•in	min. 212	212	212	212	212	212	212	212	212	400	212	400	212	400	212	1325	212	400					1325			4500
	max. 65,000	280,000	67,000	390,000	410,000											600,000										



Headquarters & Manufacturing

4200 Holland Boulevard
Chesapeake, VA 23323
Tel: 757-485-3355
Fax: 757-487-3075

www.smcyclo.com
E-mail: marketing@suminet.com

SUMITOMO Machinery Corporation of America

USA: 757-485-3355
Canada: Toronto 905-469-1050
Mexico: Monterrey 011-52-81-8369-3697
Brazil: Sao Paulo 011-55-11-4071-4388
Chile: Santiago 011-562-786-6963
Argentina: Buenos Aires 011-54-11-4765-5332

World Headquarters

Japan
Sumitomo Heavy Industries, Ltd.
Power Transmission & Controls Group
5-9-11, KITA-Shinagawa, Shinagawa-Ku
Tokyo 141-8686 Japan
Tel: 011-813-5488-8363 • Fax: 011-813-5488-8365

For worldwide location details: www.smcyclo.com