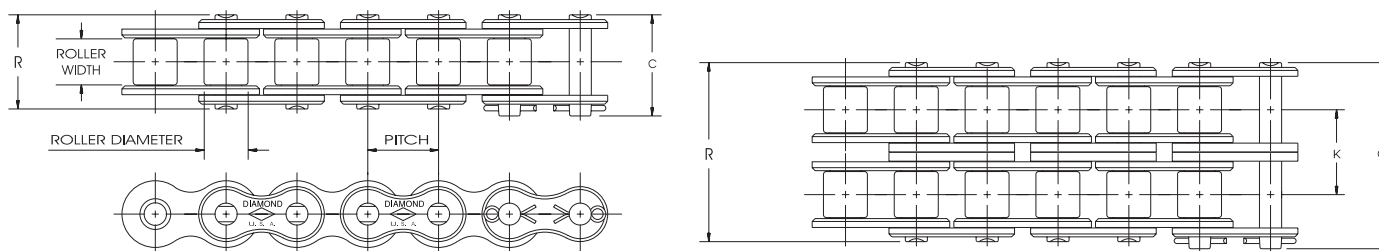


STANDARD SERIES CHAIN

Chain Descriptions and Dimensions

Standard Series Chain

Though it's referred to as standard chain, it's anything but. Our Standard Series chains, built to ASME/ANSI B29.1 standards, are manufactured to very specific requirements. The only thing standard about our chains are their ability to fit many standard applications. From industry to agriculture, our Standard Series chains are designed to last longer than any other manufacturer's roller chain.



Dimensions in Inches and Pounds

ASME/ANSI Number	Pitch Inches	Roller Width	Roller Diameter	Pin Diameter	Link Plate Thickness	C	R	K	Weight Per Foot	Average Tensile Strength
25	1/4	1/8	*.130	.090	.030	.37	.34084	875
25-2	1/4	1/8	*.130	.090	.030	.63	.59	.252	.163	1750
25-3	1/4	1/8	*.130	.090	.030	.88	.84	.252	.246	2625
35	3/8	3/16	*.200	.141	.050	.56	.50210	2100
35-2	3/8	3/16	*.200	.141	.050	.96	.90	.399	.450	4200
35-3	3/8	3/16	*.200	.141	.050	1.36	1.31	.399	.680	6300
35-4	3/8	3/16	*.200	.141	.050	1.76	1.70	.399	.910	8400
35-5	3/8	3/16	*.200	.141	.050	2.16	2.11	.399	1.140	10500
35-6	3/8	3/16	*.200	.141	.050	2.57	2.51	.399	1.370	12600
40	1/2	5/16	.312	.156	.060	.72	.67410	4000
40-2	1/2	5/16	.312	.156	.060	1.29	1.24	.566	.800	8000
40-3	1/2	5/16	.312	.156	.060	1.85	1.80	.566	1.200	12000
40-4	1/2	5/16	.312	.156	.060	2.42	2.37	.566	1.600	16000
40-6	1/2	5/16	.312	.156	.060	3.56	3.51	.566	2.420	24000
41	1/2	1/4	.306	.141	.050	.65	.57260	2400
50	5/8	3/8	.400	.200	.080	.89	.83680	6600
50-2	5/8	3/8	.400	.200	.080	1.60	1.55	.713	1.320	13200
50-3	5/8	3/8	.400	.200	.080	2.31	2.26	.713	1.980	19800
50-4	5/8	3/8	.400	.200	.080	3.03	2.97	.713	2.640	26400
50-5	5/8	3/8	.400	.200	.080	3.75	3.69	.713	3.300	33000
50-6	5/8	3/8	.400	.200	.080	4.46	4.40	.713	3.960	39600
50-8	5/8	3/8	.400	.200	.080	5.89	5.83	.713	5.300	52800
50-10	5/8	3/8	.400	.200	.080	7.32	7.26	.713	6.620	66000
60	3/4	1/2	.469	.234	.094	1.11	1.04990	8500
60-2	3/4	1/2	.469	.234	.094	2.01	1.94	.897	1.950	17000
60-3	3/4	1/2	.469	.234	.094	2.91	2.84	.897	2.880	25500
60-4	3/4	1/2	.469	.234	.094	3.81	3.74	.897	3.900	34000
60-5	3/4	1/2	.469	.234	.094	4.71	4.64	.897	4.970	42500
60-6	3/4	1/2	.469	.234	.094	5.60	5.53	.897	5.960	51000
60-8	3/4	1/2	.469	.234	.094	7.40	7.33	.897	7.940	68000
60-10	3/4	1/2	.469	.234	.094	9.19	9.12	.897	9.920	85000

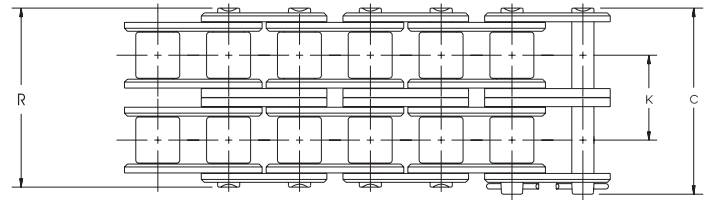
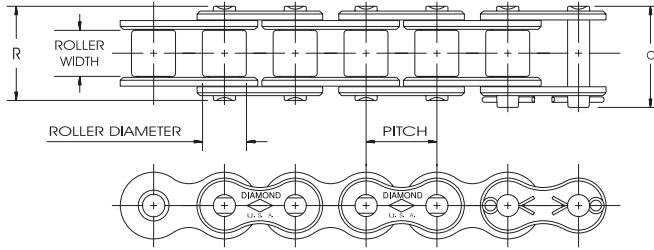
* Chains are rollerless — dimension shown is bushing diameter.

ASME/ANSI 60 and larger chains are available as cottered or riveted type design. Multiple strand chains are available with slip-fit (standard) or press-fit center plates.

Chart continues on next page.

STANDARD SERIES CHAIN

Chain Descriptions and Dimensions



Dimensions in Inches and Pounds

Chart continued from previous page.

ASME/ANSI Number	Pitch Inches	Roller Width	Roller Diameter	Pin Diameter	Link Plate Thickness	C	R	K	Weight Per Foot	Average Tensile Strength
80	1	5/8	.625	.312	.125	1.44	1.32	1.73	14500
80-2	1	5/8	.625	.312	.125	2.59	2.47	1.153	3.37	29000
80-3	1	5/8	.625	.312	.125	3.74	3.62	1.153	5.02	43500
80-4	1	5/8	.625	.312	.125	4.90	4.79	1.153	6.73	58000
80-5	1	5/8	.625	.312	.125	6.06	5.94	1.153	8.40	72500
80-6	1	5/8	.625	.312	.125	7.22	7.10	1.153	10.07	87000
80-8	1	5/8	.625	.312	.125	9.53	9.40	1.153	13.41	116000
100	1 1/4	3/4	.750	.375	.156	1.73	1.61	2.51	24000
100-2	1 1/4	3/4	.750	.375	.156	3.14	3.02	1.408	4.91	48000
100-3	1 1/4	3/4	.750	.375	.156	4.56	4.43	1.408	7.40	72000
100-4	1 1/4	3/4	.750	.375	.156	5.97	5.84	1.408	9.80	96000
100-5	1 1/4	3/4	.750	.375	.156	7.38	7.25	1.408	12.20	120000
100-6	1 1/4	3/4	.750	.375	.156	8.78	8.66	1.408	14.60	144000
100-8	1 1/4	3/4	.750	.375	.156	11.60	11.48	1.408	19.40	192000
120	1 1/2	1	.875	.437	.187	2.14	2.00	3.69	34000
120-2	1 1/2	1	.875	.437	.187	3.93	3.79	1.789	7.35	68000
120-3	1 1/2	1	.875	.437	.187	5.72	5.58	1.789	11.10	102000
120-4	1 1/2	1	.875	.437	.187	7.52	7.38	1.789	14.70	136000
120-5	1 1/2	1	.875	.437	.187	9.31	9.17	1.789	18.43	170000
120-6	1 1/2	1	.875	.437	.187	11.10	10.96	1.789	22.11	204000
120-8	1 1/2	1	.875	.437	.187	14.68	14.54	1.789	29.47	272000
120-10	1 1/2	1	.875	.437	.187	18.26	18.12	1.789	36.83	340000
140	1 3/4	1	1.000	.500	.219	2.31	2.14	5.00	46000
140-2	1 3/4	1	1.000	.500	.219	4.24	4.07	1.924	9.65	92000
140-3	1 3/4	1	1.000	.500	.219	6.16	6.00	1.924	14.30	138000
140-4	1 3/4	1	1.000	.500	.219	8.09	7.93	1.924	18.95	184000
140-6	1 3/4	1	1.000	.500	.219	11.94	11.78	1.924	28.25	276000
160	2	1 1/4	1.125	.562	.250	2.73	2.54	6.53	58000
160-2	2	1 1/4	1.125	.562	.250	5.04	4.85	2.305	12.83	116000
160-3	2	1 1/4	1.125	.562	.250	7.35	7.16	2.305	19.03	174000
160-4	2	1 1/4	1.125	.562	.250	9.66	9.47	2.305	25.60	232000
160-6	2	1 1/4	1.125	.562	.250	14.27	14.09	2.305	37.78	348000
180	2 1/4	1 13/32	1.406	.687	.281	3.15	2.88	9.06	76000
180-2	2 1/4	1 13/32	1.406	.687	.281	5.75	5.48	2.592	17.67	152000
180-3	2 1/4	1 13/32	1.406	.687	.281	8.34	8.07	2.592	26.20	228000
200	2 1/2	1 1/2	1.562	.781	.312	3.44	3.12	10.65	95000
200-2	2 1/2	1 1/2	1.562	.781	.312	6.26	5.94	2.817	21.50	190000
200-3	2 1/2	1 1/2	1.562	.781	.312	9.08	8.76	2.817	32.30	285000
200-4	2 1/2	1 1/2	1.562	.781	.312	11.90	11.58	2.817	42.90	380000
200-6	2 1/2	1 1/2	1.562	.781	.312	17.52	17.21	2.817	64.50	570000
240	3	1 7/8	1.875	.937	.375	4.32	3.83	17.03	157600
240-2	3	1 7/8	1.875	.937	.375	7.77	7.27	3.458	33.44	315200
240-3	3	1 7/8	1.875	.937	.375	11.23	10.73	3.458	49.77	472800