



BUNTING®

Product Catalog

Certified to ISO 9001:2000

CAST BRONZE
BEARINGS

CONTINUOUS AND
CENTRIFUGAL CAST
BRONZE BARS

ALUMINUM BRONZE
BAR AND WEARPLATE

POWDERED METAL
PRODUCTS

LUBE-ALIGN
MOUNTED BEARINGS

ENGINEERED
PLASTIC BEARINGS

Bunting Nylon Bearings

NYLON - Molded Nylon 101 sleeve (plane), flange, and thrust bearings provide an economical alternative where performance characteristics and the strength of metal bearings are not required. Bunting Bearings carries a full line of sleeve (plane), flange, and thrust styles to accommodate shafts up to 1" diameter.

Temperature range: -20° F/+250° F

Tolerances

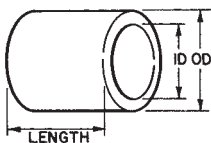
I.D. and O.D

Up to 1/2"	±.002"
1/2" up to 1"	±.003"
Over 1"	±.004"

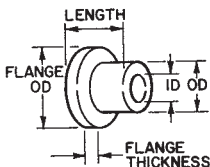
Length..... +.015"

Tolerances: Nylon bearings are molded approximately .003/.005" oversize so that when press fit into housing reamed to nominal size it results in the proper running clearance for general purpose. Closer fit may be had by reaming hole undersize.

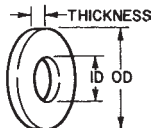
PLANE BEARINGS



FLANGE BEARINGS



THRUST BEARINGS



Nylon Sleeve (Plane) Bearings

PART NUMBER	NOMINAL		DECIMAL		LENGTH
	I.D.	O.D.	I.D.	O.D.	
NN003505 NN003508 NN003512	3/16	5/16	.1920	.3170	5/16 1/2 3/4
NN003606	3/16	3/8	.1920	.3790	3/8
NN003707	3/16	7/16	.1920	.4410	7/16
NN004604 NN004605 NN004606 NN004608 NN004610 NN004612 NN004616 NN004620	1/4	3/8	.2550	.3790	1/4 5/16 3/8 1/2 5/8 3/4 1 1- 1/4
NN004707	1/4	7/16	.2550	.4410	7/16
NN004806 NN004807	1/4	1/2	.2550	.5040	3/8 7/16

Nylon Sleeve (Plane) Bearings



PART NUMBER	NOMINAL		DECIMAL		LENGTH
	I.D.	O.D.	I.D.	O.D.	
NN004808	1/4	1/2	.2550	.5040	1/2
NN005707 NN005710	5/16	7/16	.3170	.4410	7/16 5/8
NN005804 NN005808	5/16	1/2	.3170	.5040	1/4 1/2
NN005909 NN005912 NN005916	5/16	9/16	.3170	.5660	9/16 3/4 1
NN006805 NN006806 NN006808 NN006810 NN006812 NN006814 NN006816 NN006820	3/8	1/2	.3800	.5040	5/16 3/8 1/2 5/8 3/4 7/8 1 1- 1/4
NN006909 NN006910	3/8	9/16	.3800	.5660	9/16 5/8
NN061010 NN061012 NN061016	3/8	5/8	.3800	.6290	5/8 3/4 1
NN007909 NN007912 NN007916	7/16	9/16	.4420	.5660	9/16 3/4 1
NN071010 NN071012	7/16	5/8	.4420	.6290	5/8 3/4
NN071111	7/16	11/16	.4420	.6910	11/16
NN081004 NN081006 NN081007 NN081008 NN081010 NN081012 NN081016 NN081020 NN081024	1/2	5/8	.5050	.6290	1/4 3/8 7/16 1/2 5/8 3/4 1 1- 1/4 1- 1/2
NN081111	1/2	11/16	.5050	.6910	11/16
NN081208 NN081212	1/2	3/4	.5050	.7540	1/2 3/4



Nylon Sleeve (Plane) Bearings

PART NUMBER	NOMINAL		DECIMAL		LENGTH
	I.D.	O.D.	I.D.	O.D.	
NN081216 NN081220 NN081224	1/2	3/4	.5050	.7540	1 1- 1/4 1- 1/2
NN091111 NN091116	9/16	11/16	.5670	.6910	11/16 1
NN091212	9/16	3/4	.5670	.7540	3/4
NN101313	5/8	13/16	.6250	.8125	13/16
NN101208 NN101210 NN101212 NN101214 NN101216 NN101220	5/8	3/4	.6300	.7540	1/2 5/8 3/4 7/8 1 1- 1/4
NN101412 NN101414 NN101420	5/8	7/8	.6300	.8790	3/4 7/8 1- 1/4
NN121410 NN121412 NN121414 NN121416 NN121420	3/4	7/8	.7550	.8790	5/8 3/4 7/8 1 1- 1/4
NN121515	3/4	15/16	.7550	.9410	15/16
NN121608 NN121610 NN121612 NN121616 NN121620 NN121624	3/4	1	.7550	1.0040	1/2 5/8 3/4 1 1- 1/4 1- 1/2
NN141616	7/8	1	.8800	1.0040	1
NN141818	7/8	1- 1/8	.8800	1.1290	1- 1/8
NN161816 NN161818 NN161824	1	1- 1/8	1.0050	1.1290	1 1- 1/8 1- 1/2
NN162016 NN162020 NN162024	1	1- 1/4	1.0050	1.2540	1 1- 1/4 1- 1/2

Nylon Flange Bearings



PART NUMBER	NOMINAL		DECIMAL		O.A.L.	FLANGE	
	I.D.	O.D.	I.D.	O.D.		O.D.	THK.
NF003504 NF003505 NF003508	3/16	5/16	.1920	.3170	1/4 5/16 1/2	7/16	1/16
NF003606	3/16	3/8	.1920	.3790	3/8	1/2	1/16
NF003707	3/16	7/16	.1920	.4410	7/16	9/16	1/16
NF004603 NF004604 NF004605 NF004606 NF004608 NF004610 NF004612	1/4	3/8	.2550	.3790	3/16 1/4 5/16 3/8 1/2 5/8 3/4	1/2	1/16
NF004707	1/4	7/16	.2550	.4410	7/16	9/16	1/16
NF004805 NF004806 NF004807 NF004808	1/4	1/2	.2550	.5040	5/16 3/8 7/16 1/2	5/8	1/16
NF005705 NF005707 NF005708 NF005712	5/16	7/16	.3170	.4410	5/16 7/16 1/2 3/4	9/16	1/16
NF005808	5/16	1/2	.3170	.5040	1/2	5/8	1/16
NF005909	5/16	9/16	.3170	.5660	9/16	11/16	1/16
NF006803 NF006804 NF006805 NF006806 NF006808 NF006810 NF006812 NF006816	3/8	1/2	.3800	.5040	3/16 1/4 5/16 3/8 1/2 5/8 3/4 1	5/8	1/16
NF006907 NF006909	3/8	9/16	.3800	.5660	7/16 9/16	11/16	1/16
NF061010 NF061016	3/8	5/8	.3800	.6290	5/8 1	3/4	1/16
NF007909 NF007912	7/16	9/16	.4420	.5660	9/16 3/4	11/16	1/16
NF071010	7/16	5/8	.4420	.6290	5/8	3/4	1/16
NF081004	1/2	5/8	.5050	.6290	1/4	3/4	1/16



Nylon Flange Bearings

PART NUMBER	NOMINAL		DECIMAL		O.A.L.	FLANGE	
	I.D.	O.D.	I.D.	O.D.		O.D.	THK.
NF081006 NF081007 NF081008 NF081010 NF081012 NF081016 NF081024	1/2	5/8	.5050	.6290	3/8 7/16 1/2 5/8 3/4 1 1- 1/2	3/4	1/16
NF081111	1/2	11/16	.5050	.6910	11/16	13/16	1/16
NF081207 NF081212 NF081216 NF081224	1/2	3/4	.5050	.7540	7/16 3/4 1 1- 1/2	7/8	1/16
NF091111	9/16	11/16	.5670	.6910	11/16	7/8	1/16
NF091212	9/16	3/4	.5670	.7540	3/4	7/8	1/16
NF101206 NF101207 NF101210 NF101212 NF101216 NF101220	5/8	3/4	.6300	.7540	3/8 7/16 5/8 3/4 1 1- 1/4	15/16	1/16
NF101313	5/8	13/16	.6300	.8160	13/16	1	1/16
NF101408 NF101411 NF101412 NF101414	5/8	7/8	.6300	.8790	1/2 11/16 3/4 7/8	1- 1/16	1/16
NF121410 NF121412 NF121413 NF121414 NF121416 NF121418 NF121420	3/4	7/8	.7550	.8790	5/8 3/4 13/16 7/8 1 1- 1/8 1- 1/4	1- 1/16	1/16
NF121515	3/4	15/16	.7550	.9410	15/16	1- 1/8	1/16
NF121614 NF121616 NF121618 NF121624	3/4	1	.7550	1.0040	7/8 1 1- 1/8 1- 1/2	1- 3/16	1/16
NF141616	7/8	1	.8800	1.0040	1	1- 3/16	1/16
NF141818	7/8	1- 1/8	.8800	1.1290	1- 1/8	1- 5/16	1/16

Nylon Flange Bearings



PART NUMBER	NOMINAL		DECIMAL		O.A.L.	FLANGE	
	I.D.	O.D.	I.D.	O.D.		O.D.	THK.
NF161818 NF161824	1	1- 1/8	1.0050	1.1290	1- 1/8 1- 1/2	1- 5/16	1/16
NF161919	1	1- 3/16	1.0050	1.1910	1- 3/16	1- 3/8	1/16
NF162016 NF162020	1	1- 1/4	1.0050	1.2540	1 1- 1/4	1- 7/16	1/16

Nylon Thrust Bearings



PART NUMBER	NOMINAL		DECIMAL		THICKNESS
	I.D.	O.D.	I.D.	O.D.	
NT002601	1/8	3/8	.1300	.3750	1/16
NT003701	3/16	7/16	.1920	.4380	1/16
NT031002	3/16	5/8	.1920	.6250	1/8
NT031101	3/16	11/16	.1920	.6880	1/16
NT004701	1/4	7/16	.2520	.4380	1/16
NT004801	1/4	1/2	.2550	.5000	1/16
NT041001 NT04101.5	1/4	5/8	.2550	.6250	1/16 3/32
NT041104	1/4	11/16	.2550	.6880	1/4
NT041301	1/4	13/16	.2550	.8130	1/16
NT051001	5/16	5/8	.3170	.6250	1/16
NT05121.5	5/16	3/4	.3170	.7500	3/32
NT061201 NT06121.5 NT061202	3/8	3/4	.3800	.7500	1/16 3/32 1/8
NT061401	3/8	7/8	.3800	.8750	1/16
NT061704	3/8	1- 1/16	.3800	1.0620	1/4



Nylon Thrust Bearings

PART NUMBER	NOMINAL		DECIMAL		THICKNESS
	I.D.	O.D.	I.D.	O.D.	
NT062001	3/8	1- 1/4	.3800	1.2500	1/16
NT071201	7/16	3/4	.4420	.7500	1/16
NT07141.5	7/16	7/8	.4420	.8750	3/32
NT071501	7/16	15/16	.4420	.9380	1/16
NT071704	7/16	1- 1/16	.4420	1.0620	1/4
NT081201	1/2	3/4	.5020	.7500	1/16
NT081301	1/2	13/16	.5050	.8130	1/16
NT081401	1/2	7/8	.5050	.8750	1/16
NT081601 NT08161.5 NT081602	1/2	1	.5050	1.0000	1/16 3/32 1/8
NT091301	9/16	13/16	.5650	.8130	1/16
NT101301	5/8	13/16	.6280	.8130	1/16
NT101801 NT101802	5/8	1- 1/8	.6300	1.1250	1/16 1/8
NT102001 NT102002	5/8	1- 1/4	.6300	1.2500	1/16 1/8
NT102401	5/8	1- 1/2	.6300	1.5000	1/16
NT121801 NT121802	3/4	1- 1/8	.7550	1.1250	1/16 1/8
NT122001 NT122002	3/4	1- 1/4	.7550	1.2500	1/16 1/8
NT122202	3/4	1- 3/8	.7550	1.3750	1/8
NT122402	3/4	1- 1/2	.7550	1.5000	1/8
NT123202	3/4	2	.7550	2.0000	1/8

Bunting PTFE Bearings and Bars

Bunting BJ4 (JLON 4200), BJ5 (JLON 5500), and BJ7 (JLON 7000) bar stock are manufactured from specially formulated PTFE compounds machined to close tolerances. These materials provide a low coefficient of friction, a broad temperature range, zero water absorption, and are available in a wide range of standard sizes. Bunting PTFE bearings can be utilized completely lubrication-free and have excellent wear resistance. These bearings perform reliably and efficiently at extreme temperatures, in corrosive environments, and in other demanding applications.

BJ4 bearings and bars operate at PV values up to approximately 30,000 dry. Ideal for rotary and linear bearings, BJ4 eliminates the need for lubrication in almost any environment. (JLON 4200)

Temperature range: +550° F

BJ5 bearings and bars. Because it is polymer reinforced, BJ5 runs against soft mating surfaces such as mild steel, aluminum, and SAE 316 stainless steel without the mating surface wear typically found when other filled PTFE compounds are employed. (JLON 5500)

Temperature range: +550° F

BJ7 bearings and bars. BJ7 material is made from a specially formulated PTFE compound, designed for high load and wear resistance in food and drug contact applications. All of the components of BJ7 are FDA compliant and non-toxic. (JLON 7000)

Temperature range: +550° F

BJ Liner bearings reduce material cost while being incredibly versatile. Their improved load capacity is achieved by capturing a minimum thickness of BJ tape inside a steel shell. (JLON 4200 Tape Liner)

Temperature range: -400° F/+550° F

BJ4, BJ5, and BJ7 Tolerances Sleeve (Plane) and Flange Bearings I.D. and O.D.

I.D. up to and including 2"	+ .002/- .000"
Over 2" I.D.	+ .003/- .000"
All lengths	± .005"
Flange O.D.	± .005"
Flange Thickness	± .003"

Housing Bore Tolerances

I.D. Size

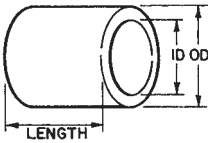
1/8" to 1-7/8"	+ .000/- .001"
2" and over	+ .000/- .003"

Shaft Size Tolerances

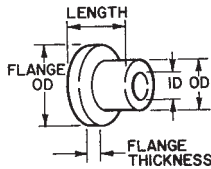
I.D. Size

1/8" to 1-1/2"	+ .000/- .001"
1-5/8" up to and including 2-1/4"	+ .000/- .0015"
2-1/2" and over	+ .000/- .002"

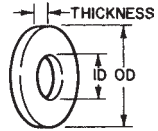
PLANE BEARINGS



FLANGE BEARINGS



THRUST BEARINGS



PTFE Sleeve (Plane) Bearings

PART NUMBER (BJ4S PREFIX)	PART NUMBER (BJ5S PREFIX)	PART NUMBER (BJ7S PREFIX)	NOMINAL			DECIMAL		RECOM- MENDED HOUSING BORE	RECOM- MENDED SHAFT SIZE
			I.D.	O.D.	LENGTH	I.D.	O.D.		
020402	020402		1/8	1/4	1/4	.1290	.2510	.2500	.1250
020403	020403				3/8	.1290	.2510	.2500	.1250
030502	030502		3/16	5/16	1/4	.1910	.3130	.3125	.1875
030503	030503				3/8	.1910	.3130	.3125	.1875
030504	030504				1/2	.1910	.3130	.3125	.1875
040602	040602	040602	1/4	3/8	1/4	.2540	.3760	.3750	.2500
040603	040603	040603			3/8	.2540	.3760	.3750	.2500
040604	040604				1/2	.2540	.3760	.3750	.2500
050803	050803		5/16	1/2	3/8	.3160	.5010	.5000	.3125
050804	050804				1/2	.3160	.5010	.5000	.3125
060903	060903	060903	3/8	9/16	3/8	.3790	.5630	.5625	.3750
060904	060904				1/2	.3790	.5630	.5625	.3750
060906	060906				3/4	.3790	.5630	.5625	.3750
071003	071003		7/16	5/8	3/8	.4410	.6260	.6250	.4375
071004	071004				1/2	.4410	.6260	.6250	.4375
071006	071006				3/4	.4410	.6260	.6250	.4375
081204	081204	081204	1/2	3/4	1/2	.5040	.7510	.7500	.5000
081206	081206				3/4	.5040	.7510	.7500	.5000
081208	081208				1	.5040	.7510	.7500	.5000
091304	091304		9/16	13/16	1/2	.5670	.8130	.8125	.5625
091306	091306				3/4	.5670	.8130	.8125	.5625
091308	091308				1	.5670	.8130	.8125	.5625
101405	101405	101405	5/8	7/8	5/8	.6300	.8760	.8750	.6250
101406	101406				3/4	.6300	.8760	.8750	.6250
101408	101408	101408			1	.6300	.8760	.8750	.6250

PTFE Sleeve (Plane) Bearings



PART NUMBER (BJ4S PREFIX)	PART NUMBER (BJ5S PREFIX)	PART NUMBER (BJ7S PREFIX)	NOMINAL			DECIMAL		RECOM- MENDED HOUSING BORE	RECOM- MENDED SHAFT SIZE
			I.D.	O.D.	LENGTH	I.D.	O.D.		
111506	111506		11/16	15/16	3/4	.6930	.9380	.9375	.6875
121604	121604	121606	3/4	1	1/2	.7550	1.0010	1.0000	.7500
121606	121606				3/4	.7550	1.0010	1.0000	.7500
121608	121608				1	.7550	1.0010	1.0000	.7500
121612	121612				121612	1- 1/2	.7550	1.0010	1.0000
141806	141806		7/8	1- 1/8	3/4	.8800	1.1260	1.1250	.8750
141808	141808				1	.8800	1.1260	1.1250	.8750
162006	162006	162008 162012	1	1- 1/4	3/4	1.0050	1.2510	1.2500	1.0000
162008	162008				1	1.0050	1.2510	1.2500	1.0000
162012	162012				162012	1- 1/2	1.0050	1.2510	1.2500
182206	182206		1- 1/8	1- 3/8	3/4	1.1300	1.3760	1.3750	1.1250
182208	182208				1	1.1300	1.3760	1.3750	1.1250
182212	182212				1- 1/2	1.1300	1.3760	1.3750	1.1250
202406	202406	202416	1- 1/4	1- 1/2	3/4	1.2550	1.5010	1.5000	1.2500
202408	202408				1	1.2550	1.5010	1.5000	1.2500
202412	202412				1- 1/2	1.2550	1.5010	1.5000	1.2500
202416	202416				2	1.2550	1.5010	1.5000	1.2500
222608	222608		1- 3/8	1- 5/8	1	1.3800	1.6260	1.6250	1.3750
222612	222612				1- 1/2	1.3800	1.6260	1.6250	1.3750
242808	242808	242816	1- 1/2	1- 3/4	1	1.5060	1.7510	1.7500	1.5000
242812	242812		1- 1/2	1- 3/4	1- 1/2	1.5060	1.7510	1.7500	1.5000
242816	242816		2	1.5060	1.7510	1.7500	1.5000		
263014			1- 5/8	1- 7/8	1- 3/4	1.6310	1.8760	1.8750	1.6250
283214			1- 3/4	2	1- 3/4	1.7560	2.0010	2.0000	1.7500
303416			1- 7/8	2- 1/8	2	1.8810	2.1260	2.1250	1.8750
323616			2	2- 1/4	2	2.0060	2.2510	2.2500	2.0000
323620					2- 1/2	2.0060	2.2510	2.2500	2.0000
364020			2- 1/4	2- 1/2	2- 1/2	2.2590	2.5020	2.5000	2.2500
404420			2- 1/2	2- 3/4	2- 1/2	2.5100	2.7520	2.7500	2.5000
444824			2- 3/4	3	3	2.7600	3.0020	3.0000	2.7500
485224			3	3- 1/4	3	3.0110	3.2520	3.2500	3.0000



PTFE Flange Bearings

PART NUMBER (BJ4F PREFIX)	PART NUMBER (BJ5F PREFIX)	PART NUMBER (BJ7F PREFIX)	NOMINAL			DECIMAL		FLG. DIA.	FLG. THK.	RECOM- MENDED HOUSING BORE	RECOM- MENDED SHAFT SIZE
			I.D.	O.D.	LENGTH	I.D.	O.D.				
030502 030504	030502 030504		3/16	5/16	1/4 1/2	.1910	.3130	.437	1/16	.3125	.1875
040603 040604	040603 040604	040604	1/4	3/8	3/8 1/2	.2540	.3760	.500	1/16	.3750	.2500
061004 061006	061004 061006	061004	3/8	5/8	1/2 3/4	.3790	.6260	.875	1/8	.6250	.3750
081204 081206 081208	081204 081206 081208	081208	1/2	3/4	1/2 3/4 1	.5040	.7510	1.000	1/8	.7500	.5000
101406 101408	101406 101408	101408	5/8	7/8	3/4 1	.6300	.8760	1.000	1/8	.8750	.6250
121608	121608	121608	3/4	1	1	.7550	1.0010	1.250	1/8	1.0000	.7500
162012	162012	162012	1	1- 1/4	1- 1/2	1.0050	1.2510	1.500	1/8	1.2500	1.0000
202416	202416	202416	1- 1/4	1- 1/2	2	1.2550	1.5010	1.750	1/8	1.5000	1.2500
242816	242816	242816	1- 1/2	1- 3/4	2	1.5060	1.7510	2.000	1/8	1.7500	1.5000
283224			1- 3/4	2	3	1.7560	2.0010	2.250	1/8	2.0000	1.7500
323624			2	2- 1/4	3	2.0060	2.2510	2.500	1/8	2.2500	2.0000



PTFE Thrust Bearings

PART NUMBER (BJ4T PREFIX)	PART NUMBER (BJ5T PREFIX)	NOMINAL			I.D. +.005/-.000"	O.D. +.003/-.003"
		I.D. +.005/-.000	O.D. +.003/-.003	THICKNESS ±.003		
041002	041002	1/4	5/8	1/16	.2540	.6250
061202	061202	3/8	3/4	1/16	.3790	.7500
081602	081602	1/2	1	1/16	.5040	1.0000
122204+	122204+	3/4	1- 3/8	1/8	.7550	1.3750
163204+	163204+	1	2	1/8	1.0050	2.0000
244804+	244804+	1- 1/2	3	1/8	1.5060	3.0000

+I.D. and O.D.: -.000/+ .006"

PTFE BJ Liner Bearings

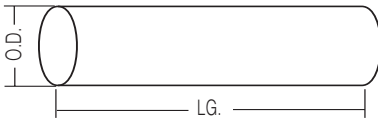


BJ LINER PART NUMBER	BJSERT PART NUMBER	NOMINAL			I.D. (MAX. SHAFT DIA.)	+O.D.	+REC. HOUSING BORE	PRESS FIT
		I.D.	O.D.	LENGTH				
BJ4TL5201	BJ5001T	1/4	11/32	3/8	.2500	.3452	.3432	.0005
BJ4TL5202	BJ5002T	5/16	7/16	7/16	.3125	.4395	.4375	.0005
BJ4TL5203	BJ5003T	3/8	1/2	1/2	.3750	.5020	.5000	.0005
BJ4TL5204	BJ5004T	1/2	5/8	1/2	.5000	.6270	.6250	.0005
BJ4TL5205	BJ5005T	5/8	3/4	3/4	.6250	.7520	.7500	.0005
BJ4TL5206	BJ5006T	3/4	7/8	3/4	.7500	.8770	.8750	.0005
BJ4TL5207	BJ5007T	7/8	1	3/4	.8750	1.0025	1.000	.0010
BJ4TL5208	BJ5008T	1	1- 1/8	1	1.0000	1.1275	1.1250	.0010
BJ4TL5209	BJ5009T	1- 1/8	1- 1/4	1	1.1250	1.2525	1.2500	.0010

* Tolerance on O.D.: +.000/- .005"

+ Tolerance on housing bore: +.000/- .001"

PTFE Solid Bars



PART NUMBER (BJ4B PREFIX)	PART NUMBER (BJ5B PREFIX)	PART NUMBER (BJ7B PREFIX)	O.D.
0004	0004		1/4
0008	0008	0008	1/2
0012	0012	0012	3/4
0016	0016	0016	1
0020	0020		1-1/4
0024	0024		1-1/2
0028	0028		1-3/4
0032	0032		2

Stocked in 12" lengths. Other lengths and sizes are also available.
Cored bars are available upon request.

Tolerances

Solid Bars

O.D.

- 1/8" to 1/2" -.000/+ .015 Min.
- 9/16" to 1" -.000/+ .020 Min.
- 1-1/16" to 1-1/2" -.000/+ .030 Min.
- 1-9/16" to 2" -.000/+ .040 Min.

Bunting Teflon® Composite Bearings

BMT - A self-lubricating, high load carrying BMT bearing is a sliding bearing which can exert excellent working property in non-lubricated condition.

The bearing layer of BMT bearing consists of PTFE/high-tension synthetic fiber liner. The backing layer consists of fiberglass impregnated into epoxy resin for high temperature. BMT bearings are designed for the applications at slow speed and under heavy load. Bearing layer cannot be machined.

Temperature range: -212° F/+350° F

Consult Bunting for standard lengths available.

I.D. Tolerances

I.D. Dimension

From 1/4" to 3/4"	+ .000/- .002"
From 7/8" to 1-1/4"	+ .000/- .003"
From 1-3/8" to 5"	+ .000/- .004"

O.D. Tolerances

O.D. Dimension

Up to 7/8"	+ .000/- .001"
1" and up	+ .000/- .002"

Length Tolerances

I.D. up to and including 2-3/8"	± .005"
I.D. 2-1/2" up to and including 5"	+ .008/- .007"

Housing Bore Tolerances

O.D. Size

Up to and including 2"	- .0005"
2-1/8" up to and including 2-7/8"	- .0010"
3" up to and including 3-1/4"	- .0015"
3-1/2" and up	- .0020"

Shaft Size Tolerances

I.D. Size

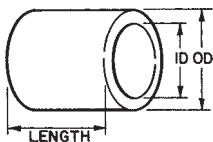
1/2" to 1-3/8"	- .0010"
1-1/2" to 2"	- .0015"
2-1/2" to 3"	- .0020"
3-1/2" to 4"	- .0030"
5"	- .0035"

Press Fit Tolerances

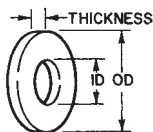
O.D. Size

Up to and including 7/8"	- .0015"
1" up to and including 2"	- .0025"
2-1/8" up to and including 2-7/8"	- .0030"
3" up to and including 3-1/4"	- .0035"
3-1/2" and up	- .0040"

PLANE BEARINGS



THRUST BEARINGS



Teflon® Composite Sleeve (Plane) Bearings



PART NUMBER (BMT PREFIX)	NOMINAL		DECIMAL		RECOM- MENDED HOUSING BORE	PRESS FIT	RECOM- MENDED SHAFT SIZE
	I.D.	O.D.	I.D.	O.D.			
0810-	1/2	5/8	.5040	.6265	.6250	.0020	.4990
0812-		3/4		.7515	.7500	.0020	.4990
0816-		1		1.0025	1.0000	.0030	.4990
1012-	5/8	3/4	.6290	.7515	.7500	.0020	.6240
1014-		7/8		.8765	.8750	.0020	.6240
1018-		1-1/8		1.1275	1.1250	.0030	.6240
1214-	3/4	7/8	.7555	.8765	.8750	.0020	.7490
1216-		1		1.0025	1.0000	.0030	.7490
1220-		1-1/4		1.2525	1.2500	.0030	.7490
1416-	7/8	1	.8805	1.0025	1.0000	.0030	.8745
1418-		1-1/8		1.1275	1.1250	.0030	.8745
1422-		1-3/8		1.3785	1.3750	.0040	.8745
1618-	1	1-1/8	1.0055	1.1275	1.1250	.0030	.9990
1620-		1-1/4		1.2525	1.2500	.0030	.9990
1624-		1-1/2		1.5025	1.5000	.0030	.9990
1820-	1-1/8	1-1/4	1.1335	1.2525	1.2500	.0030	1.2480
1822-		1-3/8		1.3785	1.3750	.0040	1.1250
1826-		1-5/8		1.6285	1.6250	.0040	1.1250
2022-	1-1/4	1-3/8	1.2555	1.3785	1.3750	.0040	1.2490
2024-		1-1/2		1.5025	1.5000	.0030	1.2490
2028-		1-3/4		1.7535	1.7500	.0040	1.2490
2224-	1-3/8	1-1/2	1.3830	1.5025	1.5000	.0030	1.3745
2226-		1-5/8		1.6285	1.6250	.0040	1.3745
2230-		1-7/8		1.8785	1.8750	.0040	1.3745
2426-	1-1/2	1-5/8	1.5080	1.6285	1.6250	.0040	1.4995
2428-		1-3/4		1.7535	1.7500	.0040	1.4995
2432-		2		2.0035	2.0000	.0040	1.4995
2628-	1-5/8	1-3/4	1.6330	1.7535	1.7500	.0040	1.6245
2830-	1-3/4	1-7/8	1.7580	1.8785	1.8750	.0040	1.7495
2832-		2		2.0035	2.0000	.0040	1.7495



Teflon[®] Composite Sleeve (Plane) Bearings

PART NUMBER (BMT PREFIX)	NOMINAL		DECIMAL		RECOM- MENDED HOUSING BORE	PRESS FIT	RECOM- MENDED SHAFT SIZE
	I.D.	O.D.	I.D.	O.D.			
2836-		2-1/4		2.2535	2.2500	.0040	1.7495
3234-	2	2-1/8	2.0080	2.1285	2.1250	.0040	1.9995
3236-		2-1/4		2.2535	2.2500	.0040	1.9995
3240-		2-1/2		2.5040	2.5000	.0045	1.9995
3640-	2-1/4	2-1/2	2.2580	2.5040	2.5000	.0045	2.2490
3644-		2-3/4		2.7540	2.7500	.0045	2.2490
3842-	2-3/8	2-5/8	2.3850	2.6290	2.6250	.0045	2.3750
3846-		2-7/8		2.8790	2.8750	.0045	2.3750
4044-	2-1/2	2-3/4	2.5100	2.7540	2.7500	.0045	2.4995
4048-		3		3.0040	3.0000	.0050	2.4995
4246-	2-5/8	2-7/8	2.6370	2.8790	2.8750	.0045	2.6245
4250-		3-1/8		3.1290	3.1250	.0050	2.6245
4448-	2-3/4	3	2.7620	3.0040	3.0000	.0050	2.7495
4452-		3-1/4		3.2540	3.2500	.0050	2.7495
4852-	3	3-1/4	3.0140	3.2540	3.2500	.0050	2.9995
4856-		3-1/2		3.5040	3.5000	.0050	2.9995
5256-	3-1/4	3-1/2	3.2640	3.5040	3.5000	.0050	3.2495
5260-		3-3/4		3.7540	3.7500	.0050	3.2495
5660-	3-1/2	3-3/4	3.5140	3.7540	3.7500	.0050	3.4995
5664-		4		4.0040	4.0000	.0050	3.4995
6064-	3-3/4	4	3.7640	4.0040	4.0000	.0050	3.7495
6068-		4-1/4		4.2540	4.2500	.0050	3.7495
6468-	4	4-1/4	4.0140	4.2540	4.2500	.0050	3.9995
6472-		4-1/2		4.5040	4.5000	.0050	3.9995
6872-	4-1/4	4-1/2	4.2640	4.5040	4.5000	.0050	4.2495
6876-		4-3/4		4.7540	4.7500	.0050	4.2495
7276-	4-1/2	4-3/4	4.5140	4.7540	4.7500	.0050	4.4995
7280-		5		5.0040	5.0000	.0050	4.4995
7680-	4-3/4	5	4.7640	5.0040	5.0000	.0050	4.7495
7684-		5-1/4		5.2540	5.2500	.0050	4.7495
8084-	5	5-1/4	5.0140	5.2540	5.2500	.0010	4.9985
8088-		5-1/2		5.5040	5.5000	.0050	4.9995

Bunting Teflon® Composite Sleeve (Plane) Bearings

BMP bearings are designed for oscillatory and linear applications, offer long wear, and are shaft kind.

For tolerance data, use BMT bearings tolerance information (see page 107).

Temperature range: -212°F/+356°F

Consult Bunting for standard lengths available.

Teflon® Composite Sleeve (Plane) Bearings



PART NUMBER (BMP PREFIX)	NOMINAL		DECIMAL		RECOMMENDED HOUSING BORE	PRESS FIT	RECOMMENDED SHAFT SIZE
	I.D.	O.D.	I.D.	O.D.			
0812-	1/2	3/4	.5040	.7515	.7500	.0020	.4995
1014-	5/8	7/8	.6290	.8765	.8750	.0020	.6245
1216-	3/4	1	.7555	1.0025	1.0000	.0030	.7495
1418-	7/8	1-1/8	.8805	1.1275	1.1250	.0030	.8745
1620-	1	1-1/4	1.0055	1.2525	1.2500	.0030	.9995
1822-	1-1/8	1-3/8	1.1335	1.3785	1.3750	.0040	1.1245
2024-	1-1/4	1-1/2	1.2555	1.5025	1.5000	.0030	1.2495
2226-	1-3/8	1-5/8	1.3830	1.6285	1.6250	.0040	1.3745
2428-	1-1/2	1-3/4	1.5080	1.7535	1.7500	.0040	1.4995
2832-	1-3/4	2	1.7580	2.0035	2.0000	.0040	1.7495
3236-	2	2-1/4	2.0080	2.2535	2.2500	.0040	1.9995
3240-	2	2-1/2	2.0080	2.5040	2.5000	.0045	1.9995
4044-	2-1/2	2-3/4	2.5100	2.7540	2.7500	.0045	2.4995
4048-	2-1/2	3	2.5100	3.0040	3.0000	.0050	2.4995
4852-	3	3-1/4	3.0140	3.2540	3.2500	.0050	2.9995
4856-	3	3-1/2	3.0140	3.5040	3.5000	.0050	2.9995
5664-	3-1/2	4	3.5140	4.0040	4.0000	.0050	3.4995
6472-	4	4-1/2	4.0140	4.5040	4.5000	.0050	3.9995
8088-	5	5-1/2	5.0140	5.5040	5.5000	.0050	4.9995

Bunting Teflon® Composite Thrust Washers

Non-metallic, self-lubricating Teflon® composite laminate washers designed to handle high thrust loads.

Bunting's Teflon® composite thrust washers are available with Teflon® fabric bonded onto one side or both sides.

Temperature range: -65° F/+250° F



Teflon® Composite Thrust Washers

PART NUMBER .074" THK.* (BTCW PREFIX)	PART NUMBER .078" THK.* (BTCWW PREFIX)	NOMINAL		DECIMAL	
		I.D.	O.D.	I.D.	O.D.
0408-3	0408-3	1/4	1/2	.2640	.5000
0612-3	0612-3	3/8	3/4	.3890	.7500
0816-3	0816-3	1/2	1	.5130	1.0000
1020-3	1020-3	5/8	1-1/4	.6380	1.2500
1224-3	1224-3	3/4	1-1/2	.7640	1.5000
1428-3	1428-3	7/8	1-3/4	.8880	1.7500
1632-3	1632-3	1	2	1.0140	2.0000
1834-3	1834-3	1-1/8	2-1/8	1.1500	2.1250
2036-3	2036-3	1-1/4	2-1/4	1.2730	2.2500
2240-3	2240-3	1-3/8	2-1/2	1.3990	2.5000
2442-3	2442-3	1-1/2	2-5/8	1.5240	2.6250
2644-3	2644-3	1-5/8	2-3/4	1.6490	2.7500
2846-3	2846-3	1-3/4	2-7/8	1.7740	2.8750
3252-3	3252-3	2	3-1/4	2.0240	3.2500
3654-3	3654-3	2-1/4	3-3/8	2.2730	3.3750
4060-3	4060-3	2-1/2	3-3/4	2.5240	3.7500
4466-3	4466-3	2-3/4	4-1/8	2.7740	4.1250
4872-3	4872-3	3	4-1/2	3.0240	4.5000

* Thickness Tolerance: $\pm .002$ "

O.D. Tolerance: $+.000/- .020$ "

Sizes not listed above may be quoted upon request.

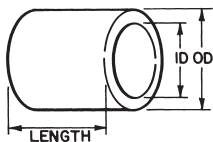
Bunting "BU" Dry Lubricant Bearings

Bunting's "BU" product is a composite material, consisting of bonded layers of a steel backing and a porous bronze matrix, impregnated and overlaid with PTFE/lead bearing material. The steel backing provides mechanical strength and the bronze inter-layer, impregnated with PTFE/lead, provides a strong mechanical bond for the lining. During normal operation, a thin film from the PTFE lining is transferred to the opposing surface and maintained there throughout the working life of the bearing.

Bunting's "BU" is available, from stock, in the form of wrapped bearings in both inch and metric sizes. Thrust washers, strip material and non-standard bearing sizes are also available.

Temperature range: $-328^{\circ}\text{F}/+536^{\circ}\text{F}$

PLANE BEARINGS



"BU" Dry Lubricant Bearings Inch Sizes



PART NUMBER	NOMINAL			RECOMMENDED				INSTALLED BEARING I.D.*	
				HOUSING BORE		SHAFT DIA.			
	I.D.	O.D.	LENGTH	MIN.	MAX.	MIN.	MAX.	MIN.	MAX.
02BU03	1/8	3/16	3/16	.1873	.1878	.1236	.1243	.1243	.1268
03BU03 03BU04 03BU08	3/16	1/4	3/16 1/4 1/2	.2497	.2503	.1858	.1865	.1867	.1893
04BU04 04BU06	1/4	5/16	1/4 3/8	.3122	.3128	.2481	.2490	.2492	.2518
05BU06 05BU08	5/16	3/8	3/8 1/2	.3747	.3753	.3106	.3115	.3117	.3143
06BU04 06BU06 06BU08 06BU10 06BU12	3/8	15/32	1/4 3/8 1/2 5/8 3/4	.4684	.4691	.3731	.3740	.3742	.3769
07BU08 07BU12	7/16	17/32	1/2 3/4	.5309	.5316	.4355	.4365	.4367	.4394
08BU04 08BU06 08BU08 08BU10 08BU12 08BU14	1/2	19/32	1/4 3/8 1/2 5/8 3/4 7/8	.5934	.5941	.4980	.4990	.4992	.5019
09BU08 09BU12	9/16	21/32	1/2 3/4	.6559	.6566	.5605	.5615	.5617	.5644
10BU08 10BU10 10BU12 10BU14	5/8	23/32	1/2 5/8 3/4 7/8	.7184	.7192	.6230	.6240	.6242	.6270
11BU14	11/16	25/32	7/8	.7809	.7817	.6855	.6865	.6867	.6895
12BU04 12BU06 12BU08	3/4	7/8	1/4 3/8 1/2	.8747	.8755	.7479	.7491	.7493	.7525

*When installed in a rigid steel or cast-iron housing.



"BU" Dry Lubricant Bearings Inch Sizes

PART NUMBER	NOMINAL			RECOMMENDED				INSTALLED BEARING I.D.*	
				HOUSING BORE		SHAFT DIA.			
	I.D.	O.D.	LENGTH	MIN.	MAX.	MIN.	MAX.	MIN.	MAX.
12BU10 12BU12 12BU16	3/4	7/8	5/8 3/4 1	.8747	.8755	.7479	.7491	.7493	.7525
14BU12 14BU16	7/8	1	3/4 1	.9997	1.0005	.8729	.8741	.8743	.8775
16BU08 16BU12 16BU16 16BU20 16BU24	1	1- 1/8	1/2 3/4 1 1- 1/4 1- 1/2	1.1247	1.1255	.9979	.9991	.9993	1.0025
18BU10 18BU12 18BU16	1- 1/8	1- 9/32	5/8 3/4 1	1.2808	1.2818	1.1226	1.1238	1.1240	1.1278
20BU12 20BU16 20BU20 20BU28	1- 1/4	1-13/32	3/4 1 1- 1/4 1- 3/4	1.4058	1.4068	1.2472	1.2488	1.2490	1.2528
22BU12 22BU16 22BU24	1- 3/8	1-17/32	3/4 1 1- 1/2	1.5308	1.5318	1.3722	1.3738	1.3740	1.3778
24BU08 24BU16 24BU20 24BU24 24BU32	1- 1/2	1-21/32	1/2 1 1- 1/4 1- 1/2 2	1.6558	1.6568	1.4972	1.4988	1.4990	1.5028
26BU16 26BU24	1- 5/8	1-25/32	1 1- 1/2	1.7808	1.7818	1.6222	1.6238	1.6240	1.6278
28BU16 28BU24	1- 3/4	1-15/16	1 1- 1/2	1.9371	1.9381	1.7471	1.7487	1.7489	1.7535
30BU16	1- 7/8	2- 1/16	1	2.0621	2.0633	1.8721	1.8737	1.8739	1.8787
32BU16 32BU24 32BU28 32BU32 32BU40	2	2- 3/16	1 1- 1/2 1- 3/4 2 2- 1/2	2.1871	2.1883	1.9969	1.9987	1.9989	2.0037

*When installed in a rigid steel or cast-iron housing.

Length Tolerances:

Up to and including 3/8" I.D. ± 0.015"
Above 3/8" I.D. ± 0.010"

"BU" Dry Lubricant Bearings

Metric Sizes



PART NUMBER	NOMINAL			RECOMMENDED				INSTALLED BEARING I.D.*	
				HOUSING BORE		SHAFT DIA.			
	I.D.	O.D.	LENGTH	MIN.	MAX.	MIN.	MAX.	MIN.	MAX.
M0303BU M0305BU M0306BU	3.00	4.50	3.00 5.00 6.00	4.5000	4.5080	2.9940	3.0000	3.0000	3.0480
M0404BU M0406BU M0410BU	4.00	5.50	4.00 6.00 10.00	5.5000	5.5080	3.9920	4.0000	4.0000	4.0480
M0505BU M0508BU M0510BU	5.00	7.00	5.00 8.00 10.00	7.0000	7.0150	4.9780	4.9900	4.9900	5.0550
M0606BU M0608BU M0610BU	6.00	8.00	6.00 8.00 10.00	8.0000	8.0150	5.9780	5.9900	5.9900	6.0550
M0710BU	7.00	9.00	10.00	9.0000	9.0150	6.9720	6.9870	6.9900	7.0550
M0808BU M0810BU M0812BU	8.00	10.00	8.00 10.00 12.00	10.0000	10.0150	7.9720	7.9870	7.9900	8.0550
M1010BU M1012BU M1015BU M1020BU	10.00	12.00	10.00 12.00 15.00 20.00	12.0000	12.0180	9.9720	9.9870	9.9900	10.0580
M1208BU M1210BU M1212BU M1215BU M1220BU M1225BU	12.00	14.00	8.00 10.00 12.00 15.00 20.00 25.00	14.0000	14.0180	11.9660	11.9840	11.9900	12.0580
M1310BU	13.00	15.00	10.00	15.0000	15.0180	12.9660	12.9840	12.9900	13.0580
M1415BU M1420BU	14.00	16.00	15.00 20.00	16.0000	16.0180	13.9660	13.9840	13.9900	14.0580
M1512BU M1515BU M1525BU	15.00	17.00	12.00 15.00 25.00	17.0000	17.0180	14.9660	14.9840	14.9900	15.0580
M1612BU M1615BU M1620BU M1625BU	16.00	18.00	12.00 15.00 20.00 25.00	18.0000	18.0180	15.9660	15.9840	15.9900	16.0580
M1720BU	17.00	19.00	20.00	19.0000	19.0210	16.9660	16.9840	16.9900	17.0610
M1815BU M1820BU M1825BU	18.00	20.00	15.00 20.00 25.00	20.0000	20.0210	17.9660	17.9840	17.9900	18.0610
M2015BU M2020BU	20.00	23.00	15.00 20.00	23.0000	23.0210	19.9590	19.9800	19.9900	20.0620

*When installed in a rigid steel or cast-iron housing.



"BU" Dry Lubricant Bearings

Metric Sizes

PART NUMBER	NOMINAL			RECOMMENDED				INSTALLED BEARING I.D.*	
				HOUSING BORE		SHAFT DIA.			
	I.D.	O.D.	LENGTH	MIN.	MAX.	MIN.	MAX.	MIN.	MAX.
M2025BU M2030BU	20.00	23.00	25.00 30.00	23.0000	23.0210	19.9590	19.9800	19.9900	20.0620
M2215BU M2220BU M2225BU	22.00	25.00	15.00 20.00 25.00	25.0000	25.0210	21.9590	21.9800	21.9900	22.0710
M2420BU M2425BU M2430BU	24.00	27.00	20.00 25.00 30.00	27.0000	27.0210	23.9590	23.9800	23.9900	24.0710
M2515BU M2520BU M2525BU M2530BU M2550BU	25.00	28.00	15.00 20.00 25.00 30.00 50.00	28.0000	28.0210	24.9590	24.9800	24.9900	25.0710
M2820BU M2830BU	28.00	32.00	20.00 30.00	32.0000	32.0250	27.9590	27.9800	27.9900	28.0850
M3020BU M3025BU M3030BU M3040BU	30.00	34.00	20.00 25.00 30.00 40.00	34.0000	34.0250	29.9590	29.9800	29.9900	30.0850
M3240BU	32.00	36.00	40.00	36.0000	36.0250	31.9500	31.9750	31.9900	32.0850
M3520BU M3530BU M3550BU	35.00	39.00	20.00 30.00 50.00	39.0000	39.0250	34.9500	34.9750	34.9900	35.0850
M4020BU M4030BU M4040BU M4050BU	40.00	44.00	20.00 30.00 40.00 50.00	44.0000	44.0250	39.9500	39.9750	39.9900	40.0850
M4530BU M4550BU	45.00	50.00	30.00 50.00	50.0000	50.0250	44.9500	44.9750	44.9900	45.1050
M5040BU M5060BU	50.00	55.00	40.00 60.00	55.0000	55.0300	49.9500	49.9750	49.9900	50.1100

*When installed in a rigid steel or cast-iron housing.

Length Tolerances:

Up to and including 10 mm I.D. ± 0.38 mm
 Above 10 mm I.D. ± 0.25 mm

Bunting VESPEL® Bearings

VESPEL® - Top of the line machined and Vespel® bearings provide capabilities of high speed, load, and temperature. Bunting Bearings offers a wide range of sizes as standard off-the-shelf, along with a full range of special, made to order sizes.

Vespel® bearings are made from polyimide resins to combine the best characteristics of plastics, metals, and ceramics. Vespel® resist wear and fight creep; properties that allow them to survive a broad range of conditions, particularly where elevated speeds and high loads present problems.

Precision machined sizes hold close tolerances.

Temperature range: Up to 550° F
Intermittently up to +900° F

Tolerances:

Sleeve (Plane) Bearings

I.D. and O.D	+ .000/- .001"
Length	± .005"

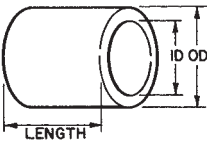
Flange Bearings

I.D. and O.D	+ .000/- .001"
Length	± .005"
Flange O.D.	± .005"
Flange Thickness	± .003"

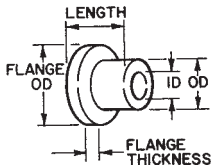
Thrust Bearings

I.D.	+ .010/- .000"
O.D.	± .005"
Thickness	± .003"

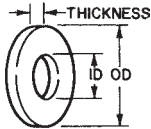
PLANE BEARINGS



FLANGE BEARINGS



THRUST BEARINGS





VESPEL®
Sleeve (Plane) Bearings
Precision Machined

PART NUMBER	I.D.	O.D.	LENGTH	RECOMMENDED HOUSING BORE
3/16 X 5/16 NOMINAL				
BVS030504 BVS030506 BVS030508	.1920	.3145	1/4 3/8 1/2	.3125
1/4 X 5/16 NOMINAL				
BVS040504 BVS040512	.2555	.3145	1/4 3/4	.3125
1/4 X 3/8 NOMINAL				
BVS040604 BVS040606 BVS040608 BVS040612 BVS040616	.2555	.3770	1/4 3/8 1/2 3/4 1	.3750
1/4 X 7/16 NOMINAL				
BVS040706	.2560	.4400	3/8	.4375
5/16 X 3/8 NOMINAL				
BVS050608	.3190	.3770	1/2	.3750
5/16 X 7/16 NOMINAL				
BVS050708	.3195	.4400	1/2	.4378
5/16 X 1/2 NOMINAL				
BVS050806 BVS050812	.3195	.5025	3/8 3/4	.5000
3/8 X 1/2 NOMINAL				
BVS060804 BVS060806 BVS060808 BVS060810 BVS060812 BVS060816 BVS060820	.3825	.5025	1/4 3/8 1/2 5/8 3/4 1 1-1/4	.5000
3/8 X 9/16 NOMINAL				
BVS060906	.3825	.5650	3/8	.5625
3/8 X 5/8 NOMINAL				
BVS061012	.3830	.6280	3/4	.6250
1/2 X 5/8 NOMINAL				
BVS081006 BVS081008 BVS081010 BVS081012	.5095	.6280	3/8 1/2 5/8 3/4	.6250

VESPEL®
Sleeve (Plane) Bearings
Precision Machined



PART NUMBER	I.D.	O.D.	LENGTH	RECOMMENDED HOUSING BORE	
BVS081016 BVS081024	.5095	.6280	1 1- 1/2	.6250	
1/2 X 3/4 NOMINAL					
BVS081208 BVS081212 BVS081216	.5100	.7535	1/2 3/4 1	.7500	
5/8 X 3/4 NOMINAL					
BVS101206 BVS101208 BVS101210 BVS101212 BVS101216	.6360	.7535	3/8 1/2 5/8 3/4 1	.7500	
3/4 X 7/8 NOMINAL					
BVS121412 BVS121416	.7635	.8790	3/4 1	.8750	
3/4 X 1 NOMINAL					
BVS121608 BVS121612 BVS121616 BVS121620 BVS121624	.7640	1.0045	1/2 3/4 1 1- 1/4 1- 1/2	1.0000	
1 X 1- 1/8 NOMINAL					
BVS161816	1.0170	1.1300	1	1.1250	
1 X 1- 1/4 NOMINAL					
BVS162012 BVS162016 BVS162020 BVS162024	1.0175	1.2555	3/4 1 1- 1/4 1- 1/2	1.2500	

VESPEL®
Flange Bearings
Precision Machined



PART NUMBER	I.D.	O.D.	O.A.L.	FLANGE		RECOMMENDED HOUSING BORE
				O.D.	THK.	
3/16 X 5/16 NOMINAL						
BVF030504 BVF030505	.1920	.3145	1/4 5/16	7/16	1/16	.3125



VESPEL®
Flange Bearings
Precision Machined

PART NUMBER	I.D.	O.D.	O.A.L.	FLANGE		RECOMMENDED HOUSING BORE
				O.D.	THK.	
1/4 X 3/8 NOMINAL						
BVF040603	.2555	.3770	3/16	1/2	1/16	.3750
BVF040604			1/4			
BVF040606			3/8			
BVF040608			1/2			
BVF040610			5/8			
5/16 X 7/16 NOMINAL						
BVF050706	.3195	.4400	3/8	9/16	1/16	.4375
5/16 X 1/2 NOMINAL						
BVF050806	.3195	.5025	3/8	11/16	1/16	.5000
3/8 X 1/2 NOMINAL						
BVF060804	.3825	.5025	1/4	5/8	1/16	.5000
BVF060805			5/16			
BVF060806			3/8			
BVF060808			1/2			
BVF060812			3/4			
3/4 X 7/8 NOMINAL						
BVF121408	.7635	.8790	1/2	1-1/8	1/8	.8750
3/4 X 1 NOMINAL						
BVF121612	.7640	1.0045	3/4	1-1/4	3/16	1.0000



VESPEL®
Thrust Bearings
Precision Machined

PART NUMBER	I.D.	O.D.	LENGTH
1/4 X 1/2 NOMINAL			
BVT040801	.2560	.5000	1/16
3/8 X 5/8 NOMINAL			
BVT061001	.3830	.6250	1/16
3/8 X 3/4 NOMINAL			
BVT061201	.3830	.7500	1/16
1/2 X 3/4 NOMINAL			
BVT081201	.5100	.7500	1/16

VESPEL®
Thrust Bearings
Precision Machined



PART NUMBER	I.D.	O.D.	THICKNESS
1/2 X 1 NOMINAL			
BVT081601 BVT081602	.5100	1.0000	1/16 1/8
5/8 X 1 NOMINAL			
BVT101601 BVT101602	.6360	1.0000	1/16 1/8
5/8 X 1- 1/4 NOMINAL			
BVT102002	.6360	1.2500	1/8
3/4 X 1- 1/4 NOMINAL			
BVT122001 BVT122002	.7630 .7630	1.2500 1.2500	1/16 1/8
1 X 1- 1/2 NOMINAL			
BVT162402	1.0170	1.5000	1/8
1 X 2 NOMINAL			
BVT163202	1.0170	2.0000	1/8
1- 1/4 X 2 NOMINAL			
BVT203201	1.2680	2.0000	1/16

DISTRIBUTED BY:



BUNTING BEARINGS CORP.

"Quality and Service"
The Bunting Commitment to
World Class Partnering