



# BUNTING<sup>®</sup>

Product Catalog

***Certified to ISO 9001:2000***

CAST BRONZE  
BEARINGS

CONTINUOUS AND  
CENTRIFUGAL CAST  
BRONZE BARS

ALUMINUM BRONZE  
BAR AND WEARPLATE

POWDERED METAL  
PRODUCTS

LUBE-ALIGN  
MOUNTED BEARINGS

ENGINEERED  
PLASTIC BEARINGS

# Powdered Metal Products

Bunting Bearings is a leader in powdered metal technology, offering the most advanced process and procedures.

Bunting provides experienced engineering assistance in material selection and part design, including unique powdered metal alloys with conventional or synthetic oils, as well as custom machining.

## Products

- Proprietary, high performance "Dri-Plane" for dry lubrication and/or high temperature applications.
- BB-16 for heavy load applications.
- Structural parts: lugs, shifter forks, gears, etc.
- Plane, thrust and flange bearings.
- Bronze bars and circular bronze discs.

## Benefits

- Self-lubricating, oil filled powdered metal products.
- Manufactured to standard ASTM specifications.
- Temperatures ranging from 10°F to 700°F.
- Multi-cavity tools lower your cost.
- In-house tooling capability.

## Sample Industries

- Household appliances
- Off-highway equipment
- Agricultural equipment
- Food processing
- Aerospace





## Bunting Dri-Plane Bearings

Bunting Bearings offers a high performance sintered bearing called "Dri-Plane" using a proprietary metal compound for dry lubrication and/or high temperature applications.

Contact the Bunting "Dri-Plane" Bearing Specialist for more information.

"Dri-Plane" bearings will provide the following:

### Benefits

- High temperature - approximately 700°F.
- No oil for lubrication, therefore cleaner and no out gassing.
- Available in all standard powdered metal bearing sizes up to 2" long.
- Available in bar stock for machining.
- Bearings made to ASTM standards.
- Made to your specifications.

### Applications

- Food processing
- Electrical equipment
- Pharmaceuticals
- Furnaces and ovens
- Aerospace
- Vacuum processes
- Glass manufacturing



# Bunting BB-16® Bearings



Bunting BB-16 is a self-lubricating, powdered metal bearing material typically used for heavily loaded applications. This bearing material has excellent compressive strength, wearability and is shock resistant.

This bearing is heat treated to a spec of HRB 70 min. and oil impregnated with an extreme pressure oil.

Contact Bunting Bearings Corp. for more information.

## Typical Uses

- Off-road equipment
- Backhoes, graders, and earth-moving equipment
- Escalators
- Automotive and railroad applications
- Heavily loaded applications

## Physical and Mechanical Properties

Density (gm per cu. cm) .....	6.0 - 6.5
Porosity (% oil by vol.) .....	18.0 min.
"K" Strength Constant .....	62,000 psi
Elongation (% in one inch) .....	0.1
Tensile Strength (psi) .....	55,000
Yield Strength in Comp. (psi) .....	50,000
Apparent Hardness (Rockwell B) .....	70 min.
Particle Hardness (Rockwell C) .....	55
Recommended Shaft Hardness .....	Rc-60



## Bunting Powdered Metal Structural Parts



- Press sizes from 4 to 500 tons.
- Manufacturing process includes blending, briquetting, sintering, sizing, infiltrating, impregnating, and finishing operations.
- Structural part weights to 8-1/2 lbs.
- Powdered metal bars up to 55 lbs. and outside diameters to 10-3/8" with lengths up to 6-5/8".
- Typical metal types include: bronzes, copper, iron, iron-copper, steel, alloy steels, and sinter-hardened steels.
- Complete Quality Control Program.
- Secondary operations include standard and CNC machining capabilities, burnishing, vibratory finishing, and heat/steam treating.
- Vacuum impregnation includes most conventional and synthetic oils.
- Modern laboratory with up-to-date testing equipment and procedures.
- Quantity range from 100 to millions of pieces.
- Available on a J.I.T. basis.
- Experienced engineering assistance in material selection and part design.
- Continuous improvement to lower your cost.

# Bunting Oil-Filled P/M Bronze Bearings

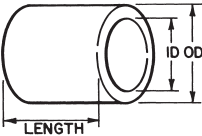
## Stock Bearings

Bunting Bearings offers a complete line of stock plane bearings, flange bearings and washers made of P/M bronze. Bunting sintered bronze stock bearings have long conformed to ASTM chemical and physical properties, and are the first to include all ASTM standard sizes to ASTM recommended dimensions and tolerances.

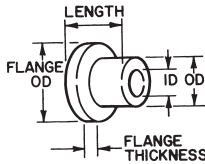
After forming, sintering and sizing, the bearings are vacuum impregnated with SAE 30 oil that provides lubricant which is metered from the bearing to the shaft during rotation.

Standard off-the-shelf oil impregnated bronze bearings should function satisfactorily in temperatures ranging from 10°F to 220°F. Consult Bunting if application requires higher temperatures or other specific operating conditions.

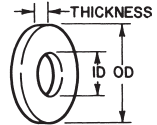
**PLANE BEARINGS**



**FLANGE BEARINGS**



**THRUST BEARINGS**



## Tolerance Tables (Inches)

**Plane Bearings**

I.D. or O.D. Size	Tolerance
-- to 1.510	-.001
1.511 to 2.510	-.0015
2.511 to 3.010	-.002
3.011 to 4.010	-.003
4.011 to 5.010	-.004

Length Size	Tolerance
-- to 1.495	±.005
1.496 to 2.990	±.0075
2.991 to 4.895	±.010

**Thrust Bearings**

I.D. Size	TT Series I.D. Tolerance	EW Series I.D. Tolerance
-- to 1.510	±.005	+.004/- .000
1.511 to 2.510	±.010	+.006/- .000
2.511 to 3.010	±.015	+.008/- .000
3.011 to 4.010	±.015	+.012/- .000
4.011 to 5.010	±.020	+.016/- .000

Thrust bearing O.D. tolerance same as flange O.D. tolerance.

Thrust bearing thickness tolerance same as flange thickness tolerance of flange bearing.

**Flange Bearings** I.D. or O.D. same as Plane Bearings

Flange O.D. size	Fig. O.D. Tolerance	Flange O.D. size	Fig. Thickness Tolerance
0 to 1.5	±0.005	0 to 1.5	±0.005
Over 1.5 to 3	±0.010	Over 1.5 to 3	±0.010
Over 3 to 6	±0.025	Over 3 to 6	±0.015

Flange thickness tolerance depends on O.D. of flange.

**CONCENTRICITY TOLERANCE**

O.D., In.,	Wall Thickness Maximum, In.	Concentricity Tolerance, In., TIR
Up to 1.010	Up to 0.255	0.003
1.011 to 1.510	Up to 0.355	0.003
1.511 to 2.010	Up to 0.505	0.004
2.011 to 3.010	Up to 0.760	0.005
3.011 to 4.010	Up to 1.010	0.005
4.011 to 5.010	Up to 1.510	0.006
5.011 to 6.010	Up to 2.010	0.007

**Chamfers and Fillets**

45° chamfers are standard for bearing walls greater than .062". Flat ends increase production tool strength and life. Bearing walls up to and including .062" are rounded. When required for installation in soft housings, special lead-in forms can be coined.

Chamfers below 45° are to be avoided. Feather edges on tooling are subject to breakage.

<b>Standard Bearing Chamfers</b>	
	<b>Chamfer</b>
Walls up to and including .062	Radius
Walls greater than .062	45°

**Housing Chamfers**

Smooth housing bore chamfers reduce bearing installation time and eliminate press fit loss due to the shearing of metal from the bearing O.D.

Tooling for production of stamped housings should be designed to provide a radius edge which will act as a lead and furnish clearance for flange fillet.

<b>Standard Housing Chamfers</b>	
<b>Bore Diameter</b>	<b>Chamfer Size</b>
Up to .500"	1/32" x 45°
.500" to 1.000"	3/64" x 45°
1.000" to 2.000"	1/16" x 45°
2.000" to 3.000"	5/64" x 45°
3.000" to 4.000"	3/32" x 45°

## Flange Fillets

A fillet at the body O.D. of a flange bearing facilitates manufacturing and strengthens the part.

Standard Flange Fillets	
Bore Diameter	Fillet Radius
Up to 1.000"	1/32"
1.000" to 2.000"	3/64"
2.000" to 2.500"	1/16"
2.500" to 4.000"	3/32"
4.000" to 6.000"	1/8"

## Press Fits (Interference Fits)

Plane cylindrical journal bearings are commonly installed by press fitting the bearing into a housing with an insertion arbor. For housings rigid enough to withstand the press fit without appreciable distortion and for bearings with thickness approximately one eighth of the bearing outside diameter, the press fits shown in the Recommended Press Fits Table are suggested.

## Recommended Press Fits (Inches)

Outside Diameter	Press Fit	
	Minimum	Maximum
Up to 0.760	0.001	0.003
0.761 to 1.510	0.0015	0.004
1.511 to 2.510	0.002	0.005
2.411 to 3.010	0.002	0.006
Over 3.010	0.002	0.007

## Running Clearance

Proper running clearance for bearings depends to a great extent on the particular application. Only minimum recommended clearances for oil impregnated bearings used with ground steel shafting are listed in the Running Clearances Table.

## Running Clearance (Inches)

Shaft Size	Clearance, Min.
Up to 0.760	0.0005
0.761 to 1.510	0.001
1.511 to 2.510	0.0015
Over 2.510	0.002

## Storage

Oil-impregnated units should be stored in suitable containers using plastic bags, waxpaper, metal, glass, etc. Wood, ordinary paper and cardboard are not suitable since they absorb oil from the bearing. Properly stored and protected against dust, oil-impregnated bearings retain their oil supply.

## Typical Properties\*

Materials Properties	SAE 841 Bronze	SAE 863
<b>COMPOSITION-PERCENT</b>		
Copper	87.5-90.5	18.0-22.0
Iron	1.0 max.	Balance
Lead	--	--
Carbon	1.75 max.	--
Tin	9.5-10.5	--
Acid Insolubles (max.)	--	--
Magnesium	--	--
Total Other Elements (max.)	0.5	2.0
Balance	--	--
<b>PHYSICAL AND MECHANICAL PROPERTIES</b>		
Density (gm per cu. cm.)	6.4-6.8	5.8-6.2
Porosity (% Oil by vol.)	19 min.	19 min.
"K" Strength Constant	26,500	30,000
Tensile Strength (PSI)	14,000	22,000
Elongation (% in one inch)	1	1
Yield Strength in Comp. (psi)**	11,000	22,000
<b>COMPARABLE SPECIFICATIONS</b>		
ASTM	B438 Grade 1 Type II	B439 Grade 4
Military	<b>BEARINGS:</b> MIL-B-5687D Type I Grade 1 <b>FORMERLY:</b> MIL-B-5687C Type I Comp. A <b>BAR:</b> <b>FORMERLY:</b> MIL-C-50709 Grade 1 Type II	MIL-B-5687D Type II Grade 4 <b>FORMERLY:</b> MIL-B-5687C Type II Comp. B
MPIF	CT-1000-K26 <b>FORMERLY:</b> CT-0010-R	--

\*Bearings may exhibit appreciable differences in properties due to size, shape, thickness, etc.

\*\*For .001" permanent set on test specimens 1-1/4" diameter x 1" long.

# Powdered Metal Plane Bearings

## SAE 841 Bronze



PART NUMBER	I.D.	O.D.	LENGTH
1/8 X 3/16 NOMINAL			
EP020304 (P12-2)	.1270	.1905	1/4
EP020308 (P12-4)			1/2
AA101-8 AA101-2 AA101 AA101-1	.1250	.1900	5/32 1/4 3/8 1/2
AA110-1 AA110-2 AA110-4	.1265	.1895	1/8 1/4 5/16
1/8 X 7/32 NOMINAL			
AA223 AA223-1	.1270	.2220	1/4 3/8
1/8 X 1/4 NOMINAL			
EP020402 (P13-1)	.1270	.2530	1/8
EP020404 (P13-2)			1/4
EP020406 (P13-3)			3/8
EP020408 (P13-4)			1/2
AA224 AA224-1	.1280	.2530	1/4 3/8
1/8 X 3/8 NOMINAL			
AA337-2 AA337-3	.1270	.3770	1/4 1/2
5/32 X 7/32 NOMINAL			
AA211 AA211-1	.1560	.2200	1/4 3/8
5/32 X 1/4 NOMINAL			
AA204-1 AA204	.1590	.2530	1/4 5/16
AA238	.1565	.2525	3/8

PART NUMBER	I.D.	O.D.	LENGTH
3/16 X 1/4 NOMINAL			
EP030404 (P18-2)	.1895	.2530	1/4
EP030406 (P18-3)			3/8
EP030408 (P18-4)			1/2
EP030410 (P18-5)			5/8
EP030412 (P18-6)			3/4
AA225-2 AA225-1 AA225-6 AA225-4 AA225-3	.1875	.2520	1/4 5/16 3/8 1/2 5/8
AA226-1 AA226-2 AA226 AA226-3 AA226-4	.1885	.2520	1/4 3/8 7/16 1/2 5/8
3/16 X 5/16 NOMINAL			
EP030503 (P19-1.5)	.1895	.3155	3/16
EP030504 (P19-2)			1/4
EP030505 (P19-2.5)			5/16
EP030506 (P19-3)			3/8
EP030508 (P19-4)			1/2
EP030510 (P19-5)			5/8
EP030512 (P19-6)			3/4
EP030516 (P19-8)			1
AA309-9	.1885	.3145	3/16



## Powdered Metal Plane Bearings SAE 841 Bronze

PART NUMBER	I.D.	O.D.	LENGTH
AA309 AA309-3 AA309-4 AA309-8 AA309-14 AA309-7 AA309-5	.1885	.3145	1/4 5/16 3/8 7/16 1/2 5/8 3/4
AA331 AA331-2 AA331-3	.1895	.3145	3/16 1/4 3/8
3/16 X 3/8 NOMINAL			
EP030604 (P20-2) EP030606 (P20-3) EP030608 (P20-4) EP030610 (P20-5) EP030612 (P20-6)	.1895	.3780	1/4 3/8 1/2 5/8 3/4
AA346-1 AA346-2 AA346	.1885	.3775	1/4 3/8 1/2
7/32 X 5/16 NOMINAL			
AA318 AA318-1	.2190	.3145	5/16 3/8
7/32 X 7/16 NOMINAL			
AA410-2 AA410-3	.2190	.4400	1/2 3/4
1/4 X 5/16 NOMINAL			
AA335-4 AA335-6 AA335-5	.2530	.3155	1/2 5/8 3/4
AA347-2 AA347-3	.2515	.3155	1/4 3/8
EP040504 (P25-2) EP040506 (P25-3)	.2520	.3155	1/4 3/8

PART NUMBER	I.D.	O.D.	LENGTH
EP040508 (P25-4) EP040510 (P25-5) EP040512 (P25-6)	.2520	.3155	1/2 5/8 3/4
AA397-1 AA397	.2505	.3145	1/4 1/2
1/4 X 3/8 NOMINAL			
EP040604 (P26-2) EP040605 (P26-2.5) EP040606 (P26-3) EP040607 (P26-3.5) EP040608 (P26-4) EP040610 (P26-5) EP040612 (P26-6) EP040614 (P26-7) EP040616 (P26-8) EP040618 (P26-9) EP040620 (P26-10)	.2520	.3780	1/4 5/16 3/8 7/16 1/2 5/8 3/4 7/8 1 1- 1/8 1- 1/4
AA304-35 AA304-9 AA304-7 AA304-24 AA304-2 AA304-5 AA304-1 AA304-22 AA304-21 AA304-20 AA304-33	.2505	.3770	1/4 5/16 3/8 7/16 1/2 9/16 5/8 3/4 7/8 1 1- 1/8

# Powdered Metal Plane Bearings

## SAE 841 Bronze



PART NUMBER	I.D.	O.D.	LENGTH
AA304-11	.2505	.3770	1- 1/4
AA307 AA307-1 AA307-9 AA307-3 AA307-10 AA307-11 AA307-2 AA307-13	.2520	.3770	1/4 5/16 3/8 1/2 5/8 3/4 1 1- 1/8
AA385-1 AA385 AA385-2	.2530	.3770	1/4 1/2 3/4
1/4 X 7/16 NOMINAL			
EP040706 (P27-3)	.2520	.4405	3/8
EP040708 (P27-4)			1/2
EP040710 (P27-5)			5/8
EP040712 (P27-6)			3/4
EP040714 (P27-7)			7/8
EP040716 (P27-8)			1
AA412-10 AA412-7 AA412-6 AA412-1 AA412-8	.2520	.4395	3/8 1/2 5/8 3/4 1
AA430 AA430-1 AA430-5 AA430-2 AA430-6 AA430-3	.2510	.4395	3/8 1/2 5/8 3/4 7/8 1
1/4 X 1/2 NOMINAL			
EP040805 (P28-2.5)	.2520	.5030	5/16
EP040808 (P28-4)			1/2

PART NUMBER	I.D.	O.D.	LENGTH
EP040812 (P28-6)	.2520	.5030	3/4
EP040816 (P28-8)			1
EP040820 (P28-10)			1- 1/4
AAB519-4 AAB519-1 AAB519-2 AAB519-3	.2520	.5015	5/16 1/2 3/4 1
5/16 X 3/8 NOMINAL			
EP050604 (P31-2)	.3145	.3780	1/4
EP050606 (P31-3)			3/8
EP050608 (P31-4)			1/2
EP050610 (P31-5)			5/8
EP050612 (P31-6)			3/4
EP050614 (P31-7)			7/8
EP050616 (P31-8)			1
AA306-11 AA306-1 AA306-3 AA306-7 AA306-8 AA306-6	.3135	.3770	1/4 5/16 3/8 1/2 5/8 3/4
5/16 X 7/16 NOMINAL			
AA403 AA403-2	.3115	.4410	3/8 1/2
EP050704 (P32-2)	.3145	.4405	1/4
EP050705 (P32-2.5)			5/16
EP050706 (P32-3)			3/8



## Powdered Metal Plane Bearings SAE 841 Bronze

PART NUMBER	I.D.	O.D.	LENGTH
EP050708 (P32-4)	.3145	.4405	1/2
EP050710 (P32-5)			5/8
EP050712 (P32-6)			3/4
EP050714 (P32-7)			7/8
EP050716 (P32-8)			1
EP050718 (P32-9)			1- 1/8
EP050720 (P32-10)			1- 1/4
AA407-1 AA407-10 AA407-7 AA407-3 AA407-2 AA407-4	.3125	.4400	1/4 5/16 3/8 1/2 5/8 3/4
AA401-17 AA401-25 AA401-2 AA401-20 AA401-3 AA401-21 AA401-11 AA401-5 AA401-12 AA401-1 AA401 AA401-6 AA401-8	.3135	.4395	1/4 5/16 3/8 7/16 1/2 5/8 11/16 3/4 7/8 1 1- 1/8 1- 1/4 1- 3/8
AA417-7 AA417 AA417-3	.3155	.4395	1/4 1/2 3/4
5/16 X 1/2 NOMINAL			
AA506-16 AA506-2 AA506-7 AA506-1 AA506-3 AA506-8 AA506-9	.3140	.5030	1/4 3/8 1/2 9/16 5/8 3/4 1

PART NUMBER	I.D.	O.D.	LENGTH
EP050806 (P33-3)	.3145	.5030	3/8
EP050808 (P33-4)			1/2
EP050810 (P33-5)			5/8
EP050812 (P33-6)			3/4
EP050814 (P33-7)			7/8
EP050816 (P33-8)			1
EP050820 (P33-10)			1- 1/4
EP050824 (P33-12)			1- 1/2
AA520-8 AA520-3 AA520-4 AA520-1 AA520-2 AA520-5	.3125	.5030	3/8 1/2 5/8 3/4 7/8 1
3/8 X 7/16 NOMINAL			
EP060708 (P37-4)	.3770	.4405	1/2
EP060710 (P37-5)			5/8
EP060712 (P37-6)			3/4
EP060716 (P37-8)			1
AA432-4 AA432-2 AA432-1 AA432-3	.3765	.4400	1/4 3/8 1/2 3/4
3/8 X 1/2 NOMINAL			
AA507-12 AA507-19 AA507-13 AA507-11 AA507-4 AA507-10	.3765	.5030	3/16 1/4 5/16 3/8 7/16 1/2

# Powdered Metal Plane Bearings

## SAE 841 Bronze



PART NUMBER	I.D.	O.D.	LENGTH
AA507-5 AA507-2 AA507-3 AA507-23 AA507-17	.3765	.5030	5/8 3/4 7/8 1 1- 1/8
AA521-4 AA521-9 AA521-8 AA521-1 AA521-10 AA521 AA521-2 AA521-11 AA521-12	.3750	.5030	1/4 3/8 7/16 1/2 5/8 3/4 7/8 1 1- 1/4
EP060803 (P38-1.5) EP060804 (P38-2) EP060805 (P38-2.5) EP060806 (P38-3) EP060807 (P38-3.5) EP060808 (P38-4) EP060810 (P38-5) EP060812 (P38-6) EP060814 (P38-7) EP060816 (P38-8) EP060818 (P38-9) EP060820 (P38-10)	.3770	.5030	3/16 1/4 5/16 3/8 7/16 1/2 5/8 3/4 7/8 1 1- 1/8 1- 1/4
AAB502-5 AAB502 AAB502-3 AAB502-1 AAB502-2	.3780	.5025	1/4 1/2 5/8 3/4 1

PART NUMBER	I.D.	O.D.	LENGTH
3/8 X 9/16 NOMINAL			
AA516-5 AA516-6 AA516-3 AA516 AA516-10 AA516-8 AA516-2	.3765	.5655	3/8 1/2 9/16 11/16 3/4 1 1- 1/4
EP060906 (P39-3) EP060908 (P39-4) EP060910 (P39-5) EP060912 (P39-6) EP060914 (P39-7) EP060916 (P39-8) EP060920 (P39-10)	.3770	.5655	3/8 1/2 5/8 3/4 7/8 1 1- 1/4
3/8 X 5/8 NOMINAL			
EP061006 (P40-3) EP061008 (P40-4) EP061010 (P40-5) EP061012 (P40-6) EP061014 (P40-7) EP061016 (P40-8) EP061020 (P40-10)	.3770	.6280	3/8 1/2 5/8 3/4 7/8 1 1- 1/4
AA630-8 AA630-16 AA630-11 AA630-6 AA630-12	.3760	.6270	3/8 7/16 1/2 5/8 3/4



## Powdered Metal Plane Bearings SAE 841 Bronze

PART NUMBER	I.D.	O.D.	LENGTH
AA630	.3760	.6270	7/8
AA630-7			1
AA630-1			1- 1/8
AA630-2			1- 1/4
3/8 X 11/16 NOMINAL			
AA615	.3765	.6890	3/4
AA615-2			1- 1/2
3/8 X 3/4 NOMINAL			
EP061206 (P41-3)	.3770	.7530	3/8
EP061208 (P41-4)			1/2
EP061212 (P41-6)			3/4
EP061216 (P41-8)			1
EP061220 (P41-10)			1- 1/4
AA707-2			.3770
AA707-3	3/4		
AA707	1		
AA707-4	1- 1/4		
7/16 X 9/16 NOMINAL			
EP070906 (P43-3)	.4395	.5655	3/8
EP070908 (P43-4)			1/2
EP070910 (P43-5)			5/8
EP070912 (P43-6)			3/4
EP070916 (P43-8)			1
EP070920 (P43-10)			1- 1/4
AA515-1	.4390	.5650	5/16
AA515-21			3/8
AA515-2			1/2
AA515-3			5/8
AA515			3/4
AA515-12			13/16
AA515-6	15/16		

PART NUMBER	I.D.	O.D.	LENGTH		
AA515-8	.4390	.5650	1		
7/16 X 5/8 NOMINAL					
EP071006 (P44-3)	.4395	.6280	3/8		
EP071008 (P44-4)			1/2		
EP071010 (P44-5)			5/8		
EP071012 (P44-6)			3/4		
EP071014 (P44-7)			7/8		
EP071016 (P44-8)			1		
EP071020 (P44-10)			1- 1/4		
EP071024 (P44-12)			1- 1/2		
AA627-5			.4390	.6270	3/8
AA627-13					7/16
AA627-8					1/2
AA627-3					5/8
AA627	3/4				
AA627-4	1				
AA627-1	1- 1/4				
AA627-7	1- 1/2				
7/16 X 11/16 NOMINAL					
EP071108 (P45-4)	.4395	.6905	1/2		
EP071116 (P45-8)			1		
EP071124 (P45-12)			1- 1/2		
1/2 X 5/8 NOMINAL					
AA607-1	.5025	.6290	1/2		
AA607-2			5/8		
AA607-5			3/4		
AA607-3			1		
AA607-6			1- 1/4		
AA628-21	.5015	.6280	5/16		
AA628-7			3/8		
AA628-8			7/16		

# Powdered Metal Plane Bearings

## SAE 841 Bronze



PART NUMBER	I.D.	O.D.	LENGTH		
AA628-10	.5015	.6280	1/2		
AA628-3			9/16		
AA628-25			5/8		
AA628-12			11/16		
AA628-6			3/4		
AA628-20			7/8		
AA628			1		
AA628-11			1- 1/4		
AA628-5			1- 1/2		
EP081005 (P50-2.5)	.5020	.6280	5/16		
EP081006 (P50-3)			3/8		
EP081007 (P50-3.5)			7/16		
EP081008 (P50-4)			1/2		
EP081009 (P50-4.5)			9/16		
EP081010 (P50-5)			5/8		
EP081011 (P50-5.5)			11/16		
EP081012 (P50-6)			3/4		
EP081014 (P50-7)			7/8		
EP081016 (P50-8)			1		
EP081018 (P50-9)			1- 1/8		
EP081020 (P50-10)			1- 1/4		
EP081024 (P50-12)			1- 1/2		
AA634-4			.5040	.6275	1/2
AA634-5					1
1/2 X 11/16 NOMINAL					
EP081106 (P51-3)	.5020	.6905	3/8		
EP081108 (P51-4)			1/2		

PART NUMBER	I.D.	O.D.	LENGTH
EP081110 (P51-5)	.5020	.6905	5/8
EP081112 (P51-6)			3/4
EP081114 (P51-7)			7/8
EP081116 (P51-8)			1
EP081118 (P51-9)			1- 1/8
EP081120 (P51-10)			1- 1/4
EP081124 (P51-12)			1- 1/2
AA618-16			.5040
AA618-1	1/2		
AA618-13	9/16		
AA618-12	5/8		
AA618-11	3/4		
AA618-8	7/8		
AA618-6	1		
AA618-2	1- 1/8		
AA618-5			1- 3/8
AA650-4	.5015	.6900	3/8
AA650-1			1/2
AA650-6			9/16
AA650-9			5/8
AA650			3/4
AA650-7			7/8
AA650-2			1
AA650-5			1- 1/8
AA650-12			1- 1/4
AA650-3			1- 1/2
AA631-13			.5025
AA631	3/4		
AA631-1	1- 1/4		
1/2 X 3/4 NOMINAL			
AA744-5	.5025	.7530	1/2
AA744-9			5/8
AA744-4			3/4
AA744-10			7/8
AA744-3			1
AA744			1- 1/4
AA744-1			1- 1/2
AA744-2			1- 3/4



## Powdered Metal Plane Bearings SAE 841 Bronze

PART NUMBER	I.D.	O.D.	LENGTH		
EP081206 (P52-3)	.5020	.7530	3/8		
EP081208 (P52-4)			1/2		
EP081210 (P52-5)			5/8		
EP081212 (P52-6)			3/4		
EP081214 (P52-7)			7/8		
EP081216 (P52-8)			1		
EP081218 (P52-9)			1- 1/8		
EP081220 (P52-10)			1- 1/4		
EP081224 (P52-12)			1- 1/2		
EP081228 (P52-14)			1- 3/4		
EP081232 (P52-16)			2		
AA742-1			.5005	.7520	1/2
AA742-2					3/4
AA742					1
AA742-4	1- 1/8				
AA742-3	1- 1/4				
AA753	.5015	.7520	1/2		
AA753-1			9/16		
AA753-5			3/4		
AA753-2			1		
AA753-4			1- 1/2		
1/2 X 13/16 NOMINAL					
EP081308 (P53-4)	.5020	.8165	1/2		
EP081312 (P53-6)			3/4		
EP081316 (P53-8)			1		
EP081324 (P53-12)			1- 1/2		

PART NUMBER	I.D.	O.D.	LENGTH		
AA886-3	.5010	.8150	3/4		
AA886-1			1		
AA886-4			1- 1/2		
1/2 X 7/8 NOMINAL					
EP081408 (P54-4)	.5020	.8790	1/2		
EP081410 (P54-5)			5/8		
EP081412 (P54-6)			3/4		
EP081414 (P54-7)			7/8		
EP081416 (P54-8)			1		
EP081420 (P54-10)			1- 1/4		
EP081424 (P54-12)			1- 1/2		
AA842-7			.5030	.8790	1/2
AA842-4					3/4
AA842-3					1
AA842-2	1- 1/4				
AA842	1- 1/2				
1/2 X 1 NOMINAL					
EP081612 (P55-6)	.5020	1.0040	3/4		
EP081616 (P55-8)			1		
EP081624 (P55-12)			1- 1/2		
EP081632 (P55-16)			2		
9/16 X 11/16 NOMINAL					
AA620-3	.5635	.6910	7/16		
AA620-7			1/2		
AA620-8			5/8		
AA620-1			3/4		
AA620			1		
AA620-5			1- 1/4		
EP091108 (P56-4)	.5645	.6905	1/2		

# Powdered Metal Plane Bearings

## SAE 841 Bronze



PART NUMBER	I.D.	O.D.	LENGTH
EP091110 (P56-5)	.5645	.6905	5/8
EP091112 (P56-6)			3/4
EP091116 (P56-8)			1
EP091120 (P56-10)			1- 1/4
EP091124 (P56-12)			1- 1/2
9/16 X 3/4 NOMINAL			
AA711-6	.5635	.7535	5/8
AA711-1			3/4
AA711-3			1
AA711-5			1- 1/4
AA711			1- 3/8
AA711-2			1- 1/2
AA709-7	.5660	.7530	1/2
AA709-8			3/4
AA709			1
AA709-5			1- 1/4
AA709-6			1- 1/2
EP091208 (P57-4)	.5645	.7530	1/2
EP091212 (P57-6)			3/4
EP091216 (P57-8)			1
EP091220 (P57-10)			1- 1/4
EP091224 (P57-12)			1- 1/2
9/16 X 13/16 NOMINAL			
EP091308 (P58-4)	.5645	.8165	1/2
EP091312 (P58-6)			3/4

PART NUMBER	I.D.	O.D.	LENGTH
EP091316 (P58-8)	.5645	.8165	1
EP091320 (P58-10)			1- 1/4
EP091324 (P58-12)			1- 1/2
AA807-3	.5630	.8150	3/4
AA807-2			1
AA807-4			1- 1/4
9/16 X 7/8 NOMINAL			
AA863-3	.5670	.8770	1
AA863			1- 3/8
5/8 X 3/4 NOMINAL			
AA710-13	.6270	.7530	3/8
AA710-27			1/2
AA710-19			5/8
AA710-6			3/4
AA710-16			7/8
AA710-3			1
AA710-8			1- 1/8
AA710-5			1- 1/4
AA710-4			1- 1/2
AA724-8	.6260	.7530	1/2
AA724-2			7/8
AA724-3			1
AA724			1- 1/8
AA724-5			1- 1/4
EP101206 (P62-3)	.6270	.7530	3/8
EP101208 (P62-4)			1/2
EP101210 (P62-5)			5/8
EP101212 (P62-6)			3/4
EP101214 (P62-7)			7/8
EP101216 (P62-8)			1
EP101218 (P62-9)			1- 1/8



## Powdered Metal Plane Bearings SAE 841 Bronze

PART NUMBER	I.D.	O.D.	LENGTH				
EP101220 (P62-10)	.6270	.7530	1- 1/4				
EP101224 (P62-12)			1- 1/2				
AA741 AA741-1 AA741-4	.6270	.7520	1/2 5/8 3/4				
5/8 X 13/16 NOMINAL							
EP101308 (P63-4)			.6270	.8165	1/2		
EP101310 (P63-5)	5/8						
EP101312 (P63-6)	3/4						
EP101314 (P63-7)	7/8						
EP101316 (P63-8)	1						
EP101320 (P63-10)	1- 1/4						
EP101324 (P63-12)	1- 1/2						
EP101328 (P63-14)	1- 3/4						
AA814-3 AA814-2 AA814 AA814-5	.6280	.8155			5/8 3/4 1 1- 1/4		
AA810-4 AA810-2 AA810-10 AA810-1 AA810-7 AA810-11 AA810 AA810-12			.6250	.8150	1/2 5/8 3/4 7/8 1 1- 1/4 1- 3/8 1- 1/2		
AA811-7 AA811-6 AA811-2 AA811-5 AA811-3 AA811-1 AA811					.6270	.8150	3/4 1 1- 1/4 1- 3/8 1- 1/2 1- 3/4 2

PART NUMBER	I.D.	O.D.	LENGTH						
5/8 X 7/8 NOMINAL									
EP101408 (P64-4)	.6270	.8790	1/2						
EP101410 (P64-5)			5/8						
EP101412 (P64-6)			3/4						
EP101414 (P64-7)			7/8						
EP101416 (P64-8)			1						
EP101418 (P64-9)			1- 1/8						
EP101420 (P64-10)			1- 1/4						
EP101424 (P64-12)			1- 1/2						
EP101428 (P64-14)			1- 3/4						
EP101432 (P64-16)			2						
AA832-11 AA832-12 AA832-6 AA832-8 AA832-1 AA832-13 AA832-4 AA832-2 AA832-5 AA832-9 AA832-18			.6270	.8780	1/2 5/8 3/4 7/8 1 1- 1/8 1- 1/4 1- 3/8 1- 1/2 1- 5/8 2				
AA880-4 AA880-2 AA880-1 AA880					.6250	.8770	1/2 3/4 1 1- 1/2		
5/8 X 15/16 NOMINAL									
EP101510 (P65-5)							.6270	.9415	5/8
EP101512 (P65-6)									3/4
EP101516 (P65-8)					1				

# Powdered Metal Plane Bearings

## SAE 841 Bronze



PART NUMBER	I.D.	O.D.	LENGTH
AA946-4 AA946-2 AA946-1	.6280	.9400	5/8 3/4 1
5/8 X 1 NOMINAL			
EP101608 (P66-4)	.6270	1.0040	1/2
EP101610 (P66-5)			5/8
EP101612 (P66-6)			3/4
EP101616 (P66-8)			1
EP101620 (P66-10)			1- 1/4
EP101624 (P66-12)			1- 1/2
EP101628 (P66-14)			1- 3/4
EP101632 (P66-16)			2
AA1011-12 AA1011-5 AA1011-3 AA1011-4 AA1011-1 AA1011-13 AA1011			.6280
11/16 X 13/16 NOMINAL			
AA812-1 AA812	.6885	.8150	1 1- 1/4
11/16 X 7/8 NOMINAL			
EP111412 (P68-6)	.6895	.8790	3/4
EP111416 (P68-8)			1
EP111420 (P68-10)			1- 1/4
EP111424 (P68-12)			1- 1/2
EP111428 (P68-14)			1- 3/4

PART NUMBER	I.D.	O.D.	LENGTH		
EP111432 (P68-16)	.6895	.8790	2		
AA851-2 AA851-7 AA851-8 AA851-6 AA851-1	.6900	.8780	1/2 3/4 1 1- 1/8 1- 1/4		
11/16 X 15/16 NOMINAL					
AA939-3 AA939-2 AA939-4			.6890	.9410	1 1- 1/4 1- 1/2
3/4 X 7/8 NOMINAL					
EP121408 (P75-4)			.7520	.8790	1/2
EP121409 (P75-4.5)	9/16				
EP121410 (P75-5)	5/8				
EP121411 (P75-5.5)	11/16				
EP121412 (P75-6)	3/4				
EP121414 (P75-7)	7/8				
EP121416 (P75-8)	1				
EP121418 (P75-9)	1- 1/8				
EP121420 (P75-10)	1- 1/4				
EP121424 (P75-12)	1- 1/2				
EP121426 (P75-13)	1- 5/8				
AA838-9 AA838-25 AA838-16 AA838-6 AA838-7 AA838-13 AA838-5 AA838-15 AA838-4	.7510	.8780			9/16 5/8 3/4 7/8 1 1- 1/8 1- 1/4 1- 3/8 1- 1/2



## Powdered Metal Plane Bearings SAE 841 Bronze

PART NUMBER	I.D.	O.D.	LENGTH		
AA838-8	.7510	.8780	1- 5/8		
AA839-1	.7530	.8780	5/8		
AA839-3			11/16		
AA839-6			3/4		
AA839-13			1		
AA839-2			1- 1/8		
AA839-4			1- 1/4		
AA839-7			1- 1/2		
AA885	.7520	.8780	3/4		
AA885-3			1		
AA885-4			1- 1/4		
3/4 X 15/16 NOMINAL					
AA912	.7520	.9420	1		
AA912-4			1- 1/4		
AA912-1			1- 3/8		
AA912-6			1- 1/2		
AA912-2			1- 5/8		
AA912-7			1- 3/4		
EP121508 (P76-4)			.7520	.9415	1/2
EP121510 (P76-5)	5/8				
EP121512 (P76-6)	3/4				
EP121514 (P76-7)	7/8				
EP121516 (P76-8)	1				
EP121518 (P76-9)	1- 1/8				
EP121520 (P76-10)	1- 1/4				
EP121524 (P76-12)	1- 1/2				
EP121528 (P76-14)	1- 3/4				
EP121532 (P76-16)	2				
AA921-5	.7515	.9400			3/4
AA921-4					1
AA921-2					1- 1/8
AA921-3					1- 1/4
AA921-1					1- 1/2

PART NUMBER	I.D.	O.D.	LENGTH		
AA921	.7515	.9400	1- 3/4		
AA921-6			2		
3/4 X 1 NOMINAL					
EP121608 (P77-4)	.7520	1.0040	1/2		
EP121610 (P77-5)			5/8		
EP121612 (P77-6)			3/4		
EP121614 (P77-7)			7/8		
EP121616 (P77-8)			1		
EP121618 (P77-9)			1- 1/8		
EP121620 (P77-10)			1- 1/4		
EP121624 (P77-12)			1- 1/2		
EP121628 (P77-14)			1- 3/4		
EP121632 (P77-16)			2		
EP121640 (P77-20)			2- 1/2		
AA1043-6			.7530	1.0030	3/4
AA1043-8					7/8
AA1043-9					1
AA1043					1- 1/4
AA1043-4					1- 1/2
AA1005-5			.7505	1.0025	3/4
AA1005-7					1
AA1005-3					1- 1/8
AA1005-2					1- 1/4
AA1005-4	1- 1/2				
AA1049-18	.7520	1.0025	3/8		
AA1049-14			1/2		
AA1049-1			3/4		
AA1049-2			7/8		
AA1049-3			1		
AA1049-16			1- 1/8		
AA1049			1- 1/4		
AA1049-17			1- 3/8		
AA1049-4	1- 1/2				

# Powdered Metal Plane Bearings

## SAE 841 Bronze



PART NUMBER	I.D.	O.D.	LENGTH
AA1049-9 AA1049-5 AA1049-11 AA1049-12 AA1049-6	.7520	1.0025	1-3/4 2 2-1/8 2-1/4 2-1/2
3/4 X 1- 1/16 NOMINAL			
AA1039 AA1039-2	.7510	1.0645	1 1- 1/4
3/4 X 1- 1/8 NOMINAL			
AA1130-3 AA1130	.7500	1.1290	3/4 1- 1/4
EP121808 (P78-4) EP121812 (P78-6) EP121816 (P78-8) EP121820 (P78-10) EP121824 (P78-12) EP121828 (P78-14) EP121832 (P78-16)	.7520	1.1290	1/2 3/4 1 1- 1/4 1- 1/2 1- 3/4 2
AA1106-2 AA1106-4 AA1106-3 AA1106-13 AA1106 AA1106-1	.7530	1.1280	3/4 1 1- 1/4 1- 3/8 1- 1/2 1- 3/4
3/4 X 1- 1/4 NOMINAL			
EP122012 (P79-6) EP122016 (P79-8) EP122020 (P79-10) EP122024 (P79-12)	.7520	1.2540	3/4 1 1- 1/4 1- 1/2

PART NUMBER	I.D.	O.D.	LENGTH
AA1257 AA1257-1 AA1257-2	.7530	1.2530	1 1- 1/4 1- 1/2
13/16 X 1 NOMINAL			
AA1041-2 AA1041-5 AA1041-6	.8145	1.0030	7/8 1 1- 1/4
AA1056-5 AA1056-3 AA1056	.8135	1.0030	1 1- 1/4 1- 3/4
7/8 X 1 NOMINAL			
EP141606 (P87-3) EP141608 (P87-4) EP141610 (P87-5) EP141612 (P87-6) EP141614 (P87-7) EP141616 (P87-8) EP141620 (P87-10) EP141624 (P87-12) EP141628 (P87-14)	.8770	1.0040	3/8 1/2 5/8 3/4 7/8 1 1- 1/4 1- 1/2 1- 3/4
AA1008-11 AA1008-14 AA1008-9 AA1008-13 AA1008-5 AA1008-6 AA1008-1 AA1008-2 AA1008-10	.8760	1.0030	3/8 7/16 1/2 5/8 3/4 1 1- 1/4 1- 1/2 1- 3/4
AA1009-5 AA1009-8 AA1009-3 AA1009	.8770	1.0030	5/8 3/4 1 1- 1/8



## Powdered Metal Plane Bearings SAE 841 Bronze

PART NUMBER	I.D.	O.D.	LENGTH		
AA1009-2	.8770	1.0030	1- 1/4		
7/8 X 1- 1/16 NOMINAL					
EP141716 (P88-8)	.8770	1.0665	1		
EP141720 (P88-10)			1- 1/4		
AA1051-3 AA1051-2	.8770	1.0650	3/4 1- 1/4		
7/8 X 1- 1/8 NOMINAL					
EP141812 (P89-6)	.8770	1.1290	3/4		
EP141814 (P89-7)			7/8		
EP141816 (P89-8)			1		
EP141818 (P89-9)			1- 1/8		
EP141820 (P89-10)			1- 1/4		
EP141822 (P89-11)			1- 3/8		
EP141824 (P89-12)			1- 1/2		
EP141828 (P89-14)			1- 3/4		
EP141832 (P89-16)			2		
EP141836 (P89-18)			2- 1/4		
EP141840 (P89-20)			2- 1/2		
AA1108 AA1108-15 AA1108-1 AA1108-2 AA1108-7 AA1108-16 AA1108-12 AA1108-10 AA1108-3 AA1108-11 AA1108-5			.8760	1.1280	3/4 7/8 1 1- 1/8 1- 1/4 1- 3/8 1- 1/2 1- 3/4 2 2- 1/4 2- 1/2

PART NUMBER	I.D.	O.D.	LENGTH		
AA1108-6	.8760	1.1280	2- 3/4		
AA1104-2 AA1104-5 AA1104-4 AA1104-3	.8780	1.1275	1 1- 1/4 1- 3/8 1- 1/2		
7/8 X 1- 1/4 NOMINAL					
EP142012 (P90-6)			.8770	1.2540	3/4
EP142016 (P90-8)					1
EP142020 (P90-10)	1- 1/4				
EP142024 (P90-12)	1- 1/2				
EP142032 (P90-16)	2				
AA1242-2 AA1242-3 AA1242	.8780	1.2530			3/4 1 1- 3/8
AA1203-3 AA1203 AA1203-1			.8770	1.2520	1 1- 1/4 1- 1/2
15/16 X 1- 1/16 NOMINAL					
AA1087-1 AA1087	.9400	1.0650			3/4 1- 1/4
15/16 X 1- 3/16 NOMINAL					
EP151912 (P93-6)	.9395	1.1915	3/4		
EP151916 (P93-8)			1		
EP151920 (P93-10)			1- 1/4		
EP151924 (P93-12)			1- 1/2		
EP151932 (P93-16)			2		
AA1118-6 AA1118-4 AA1118-2 AA1118-5			.9390	1.1895	7/8 1 1- 1/4 1- 1/2

# Powdered Metal Plane Bearings

## SAE 841 Bronze



PART NUMBER	I.D.	O.D.	LENGTH
15/16 X 1- 1/4 NOMINAL			
AA1216-3 AA1216	.9400	1.2540	1- 1/2 2
EP152012 (P94-6)	.9395	1.2540	3/4
EP152016 (P94-8)			1
EP152020 (P94-10)			1- 1/4
EP152024 (P94-12)			1- 1/2
EP152028 (P94-14)			1- 3/4
EP152032 (P94-16)			2
AA1206-1 AA1206-4 AA1206-2			.9375
1 X 1- 1/8 NOMINAL			
EP161812 (P100-6)	1.0030	1.1290	3/4
EP161814 (P100-7)			7/8
EP161816 (P100-8)			1
EP161820 (P100-10)			1- 1/4
EP161824 (P100-12)			1- 1/2
EP161828 (P100-14)			1- 3/4
EP161832 (P100-16)			2
AA1110-8 AA1110-10 AA1110-2 AA1110-1 AA1110-3 AA1110-12 AA1110			1.0010

PART NUMBER	I.D.	O.D.	LENGTH
AA1156 AA1156-4 AA1156-3 AA1156-1	1.0035	1.1280	3/4 7/8 1- 1/4 1- 1/2
1 X 1- 3/16 NOMINAL			
EP161912 (P101-6)	1.0030	1.1915	3/4
EP161916 (P101-8)			1
EP161920 (P101-10)			1- 1/4
EP161924 (P101-12)			1- 1/2
EP161928 (P101-14)			1- 3/4
EP161932 (P101-16)			2
AA1154-2 AA1154-1 AA1154-3 AA1154			1.0020
1 X 1- 1/4 NOMINAL			
EP162008 (P102-4)	1.0030	1.2540	1/2
EP162012 (P102-6)			3/4
EP162014 (P102-7)			7/8
EP162016 (P102-8)			1
EP162020 (P102-10)			1- 1/4
EP162022 (P102-11)			1- 3/8
EP162024 (P102-12)			1- 1/2
EP162028 (P102-14)			1- 3/4
EP162032 (P102-16)			2
EP162036 (P102-18)			2- 1/4



## Powdered Metal Plane Bearings SAE 841 Bronze

PART NUMBER	I.D.	O.D.	LENGTH								
EP162040 (P102-20)	1.0030	1.2540	2- 1/2								
EP162048 (P102-24)			3								
AA1232-6 AA1232 AA1232-2 AA1232-3 AA1232-7 AA1232-8 AA1232-4 AA1232-5	1.0030	1.2530	3/4 1 1- 1/8 1- 1/4 1- 1/2 1- 3/4 2 2- 1/2								
AA1204-7 AA1204-2 AA1204-1 AA1204 AA1204-3 AA1204-5 AA1204-4			1.0050	1.2525	1 1- 1/4 1- 3/8 1- 1/2 2 2- 1/4 2- 1/2						
AA1212-7 AA1212-6 AA1212-2 AA1212-16 AA1212-11 AA1212-4 AA1212-3 AA1212-5 AA1212 AA1212-8 AA1212-14					1.0010	1.2520	1/2 3/4 1 1- 1/4 1- 1/2 1- 3/4 2 2- 1/4 2- 1/2 2- 7/8 3				
AA1213-6 AA1213-3 AA1213-10 AA1213-12 AA1213-1 AA1213-2 AA1213 AA1213-14 AA1213-15							1.0020	1.2520	7/8 1 1- 1/8 1- 1/4 1- 1/2 1- 3/4 2 2- 1/2 3		
1 X 1- 5/16 NOMINAL											
EP162116 (P103-8)									1.0030	1.3165	1
EP162120 (P103-10)											1- 1/4

PART NUMBER	I.D.	O.D.	LENGTH						
EP162124 (P103-12)	1.0030	1.3165	1- 1/2						
EP162128 (P103-14)			1- 3/4						
EP162132 (P103-16)			2						
EP162140 (P103-20)			2- 1/2						
EP162148 (P103-24)			3						
AA1304-3 AA1304 AA1304-4 AA1304-6	1.0010	1.3160	1 1- 1/2 1- 3/4 2						
AA1325-10 AA1325-8 AA1325-4 AA1325-7 AA1325-5 AA1325 AA1325-1 AA1325-3 AA1325-2			1.0020	1.3150	1 1- 1/4 1- 1/2 1- 5/8 1- 3/4 2 2- 1/2 2- 3/4 3				
1 X 1- 3/8 NOMINAL									
EP162216 (P104-8)	1.0030	1.3790			1				
EP162220 (P104-10)					1- 1/4				
EP162224 (P104-12)					1- 1/2				
EP162228 (P104-14)					1- 3/4				
EP162232 (P104-16)					2				
EP162240 (P104-20)					2- 1/2				
AA1334-3 AA1334-5 AA1334-1 AA1334-2					1.0010	1.3780	3/4 1- 1/4 1- 1/2 2		
AA1310-2 AA1310-1							1.0030	1.3770	1 1- 1/8

# Powdered Metal Plane Bearings

## SAE 841 Bronze



PART NUMBER	I.D.	O.D.	LENGTH
AA1310-4 AA1310 AA1310-5 AA1310-8 AA1310-3 AA1310-6	1.0030	1.3770	1- 1/4 1- 3/8 1- 1/2 1- 3/4 2 2- 1/4
1 X 1- 1/2 NOMINAL			
AA1511-7 AA1511-8 AA1511-5 AA1511-1	1.0035	1.5045	1 1- 1/4 1- 1/2 2
EP162416 (P105-8) EP162420 (P105-10) EP162424 (P105-12) EP162428 (P105-14) EP162432 (P105-16) EP162440 (P105-20) EP162448 (P105-24)	1.0030	1.5040	1 1- 1/4 1- 1/2 1- 3/4 2 2- 1/2 3
1- 1/16 X 1- 5/16 NOMINAL			
AA1307-2 AA1307-4 AA1307-5 AA1307-1	1.0640	1.3170	3/4 1 1- 1/4 1- 1/2
1- 1/8 X 1- 1/4 NOMINAL			
EP182016 (P112-8) EP182020 (P112-10) EP182024 (P112-12)	1.1280	1.2540	1 1- 1/4 1- 1/2
AA1214-6 AA1214-3 AA1214-2 AA1214-1 AA1214-8	1.1245	1.2535	7/8 1 1- 1/8 1- 1/4 1- 1/2

PART NUMBER	I.D.	O.D.	LENGTH
AA1250-2 AA1250-3	1.1270	1.2525	1- 1/4 1- 1/2
1- 1/8 X 1- 5/16 NOMINAL			
EP182116 (P113-8) EP182120 (P113-10) EP182124 (P113-12) EP182128 (P113-14) EP182132 (P113-16)	1.1280	1.3165	1 1- 1/4 1- 1/2 1- 3/4 2
AA1317 AA1317-1	1.1265	1.3155	1 1- 1/4
1- 1/8 X 1- 3/8 NOMINAL			
AA1319-10 AA1319-3 AA1319 AA1319-13 AA1319-5 AA1319-1 AA1319-12 AA1319-2	1.1290	1.3790	1/2 1 1- 1/4 1- 1/2 1- 3/4 2 2- 1/4 2- 1/2
EP182208 (P114-4) EP182212 (P114-6) EP182216 (P114-8) EP182220 (P114-10) EP182224 (P114-12) EP182228 (P114-14) EP182232 (P114-16) EP182240 (P114-20) EP182248 (P114-24)	1.1280	1.3790	1/2 3/4 1 1- 1/4 1- 1/2 1- 3/4 2 2- 1/2 3



## Powdered Metal Plane Bearings SAE 841 Bronze

PART NUMBER	I.D.	O.D.	LENGTH		
AA1332-6	1.1270	1.3770	1/2		
AA1332-1			3/4		
AA1332-4			1		
AA1332-9			1- 1/4		
AA1332-7			1- 1/2		
AA1332-10			1- 3/4		
AA1332			2		
AA1332-11			2- 1/4		
AA1332-2			2- 1/2		
AA1332-8			3		
1- 1/8 X 1- 1/2 NOMINAL					
EP182416 (P115-8)	1.1280	1.5040	1		
EP182420 (P115-10)			1- 1/4		
EP182424 (P115-12)			1- 1/2		
EP182428 (P115-14)			1- 3/4		
EP182432 (P115-16)			2		
EP182440 (P115-20)			2- 1/2		
AA1502			1.1270	1.5035	1
AA1502-2					1- 1/4
AA1502-3	1- 1/2				
AA1509-4	1.1260	1.5030	1		
AA1509-1			1- 1/2		
AA1509-6			1- 3/4		
AA1509			2		
AA1509-3			2- 1/2		
1- 3/16 X 1- 5/16 NOMINAL					
AA1339-2	1.1890	1.3155	1		
AA1339			1- 1/4		
1- 3/16 X 1- 3/8 NOMINAL					
AA1324-1	1.1890	1.3790	1- 1/2		
AA1324			1- 3/4		
1- 3/16 X 1- 7/16 NOMINAL					
EP192320 (P118-10)	1.1905	1.4415	1- 1/4		
EP192324 (P118-12)			1- 1/2		

PART NUMBER	I.D.	O.D.	LENGTH
EP192332 (P118-16)	1.1905	1.4415	2
EP192340 (P118-20)			2- 1/2
EP192348 (P118-24)			3
AA1403-3	1.1885	1.4410	1- 1/4
AA1403-7			1- 1/2
AA1403-10			2
1- 3/16 X 1- 1/2 NOMINAL			
AA1504-6	1.1930	1.5040	1
AA1504-1			1- 1/2
AA1523-2	1.1900	1.5040	1
AA1523-5			1- 1/2
AA1523			2
AA1523-3			2- 1/2
EP192416 (P119-8)	1.1905	1.5040	1
EP192420 (P119-10)			1- 1/4
EP192424 (P119-12)			1- 1/2
EP192428 (P119-14)			1- 3/4
EP192432 (P119-16)			2
EP192440 (P119-20)			2- 1/2
EP192448 (P119-24)			3
1- 1/4 X 1- 7/16 NOMINAL			
AA1407-4	1.2515	1.4405	1- 1/4
AA1407-5			1- 1/2
AA1407			1- 3/4
AA1407-6			2
AA1407-8			2- 1/2
1- 1/4 X 1- 1/2 NOMINAL			
AA1505-11	1.2580	1.5040	1
AA1505-1			1- 1/2
AA1528	1.2535	1.5040	1

# Powdered Metal Plane Bearings

## SAE 841 Bronze



PART NUMBER	I.D.	O.D.	LENGTH
AA1528-3 AA1528-4	1.2535	1.5040	1- 1/4 1- 1/2
EP202408 (P125-4)	1.2535	1.5040	1/2
EP202410 (P125-5)			5/8
EP202412 (P125-6)			3/4
EP202414 (P125-7)			7/8
EP202416 (P125-8)			1
EP202418 (P125-9)			1- 1/8
EP202420 (P125-10)			1- 1/4
EP202422 (P125-11)			1- 3/8
EP202424 (P125-12)			1- 1/2
EP202426 (P125-13)			1- 5/8
EP202428 (P125-14)			1- 3/4
EP202430 (P125-15)			1- 7/8
EP202432 (P125-16)			2
EP202436 (P125-18)			2- 1/4
EP202440 (P125-20)			2- 1/2
EP202448 (P125-24)			3
AA1512-12 AA1512-11 AA1512-14 AA1512-7 AA1512-15 AA1512-16 AA1512-3 AA1512-2 AA1512-17	1.2520	1.5020	1/2 5/8 3/4 7/8 1 1- 1/4 1- 3/8 1- 1/2 1- 3/4

PART NUMBER	I.D.	O.D.	LENGTH
AA1512-1 AA1512-5 AA1512-13	1.2520	1.5020	1- 7/8 2 2- 1/2
AA1517-4 AA1517-6 AA1517-1	1.2500	1.5020	3/4 1- 1/4 1- 5/8
1- 1/4 X 1- 9/16 NOMINAL			
AA1506-12 AA1506-6 AA1506 AA1506-7 AA1506-8	1.2520	1.5650	1- 1/4 1- 1/2 1- 3/4 2 2- 1/4
1- 1/4 X 1- 5/8 NOMINAL			
EP202616 (P126-8)	1.2535	1.6300	1
EP202620 (P126-10)			1- 1/4
EP202624 (P126-12)			1- 1/2
EP202628 (P126-14)			1- 3/4
EP202632 (P126-16)			2
EP202640 (P126-20)			2- 1/2
EP202648 (P126-24)			3
AA1604 AA1604-2	1.2540	1.6290	1- 1/2 1- 3/4
AA1606-9 AA1606 AA1606-7 AA1606-11 AA1606-1 AA1606-3 AA1606-5 AA1606-4	1.2520	1.6275	1 1- 1/4 1- 1/2 1- 5/8 1- 3/4 2 2- 1/2 3
AA1602	1.2500	1.6270	1- 1/2
1- 1/4 X 1- 3/4 NOMINAL			
EP202828 (P127-14)	1.2535	1.7550	1- 3/4



## Powdered Metal Plane Bearings SAE 841 Bronze

PART NUMBER	I.D.	O.D.	LENGTH	
EP202832 (P127-16)	1.2535	1.7550	2	
EP202840 (P127-20)			2- 1/2	
EP202848 (P127-24)			3	
AA1715-6 AA1715-2 AA1715-3	1.2540	1.7530	1- 1/2 2 3	
1- 5/16 X 1- 1/2 NOMINAL				
AA1526-4 AA1526 AA1526-2 AA1526-3			1.3155	1.5030
1- 5/16 X 1- 5/8 NOMINAL				
EP212620 (P131-10)	1.3160	1.6300		
EP212624 (P131-12)			1- 1/2	
EP212632 (P131-16)			2	
EP212640 (P131-20)			2- 1/2	
EP212648 (P131-24)			3	
AA1611-5 AA1611-2 AA1611			1.3155	1.6290
1- 3/8 X 1- 9/16 NOMINAL				
AA1507-2 AA1507	1.3745	1.5655		
1- 3/8 X 1- 5/8 NOMINAL				
EP222616 (P137-8)			1.3785	1.6300
EP222618 (P137-9)	1- 1/8			
EP222620 (P137-10)	1- 1/4			
EP222624 (P137-12)	1- 1/2			

PART NUMBER	I.D.	O.D.	LENGTH			
EP222632 (P137-16)	1.3785	1.6300	2			
EP222640 (P137-20)			2- 1/2			
EP222648 (P137-24)			3			
AA1608-10 AA1608-1 AA1608-11 AA1608-12 AA1608-13 AA1608 AA1608-3	1.3760	1.6280	1 1- 1/8 1- 1/4 1- 1/2 1- 3/4 2 2- 1/2			
AA1616-3 AA1616-5 AA1616-7			1.3790	1.6280	1- 1/2 2 2- 1/2	
1- 3/8 X 1- 3/4 NOMINAL						
EP222816 (P138-8)					1.3785	1.7550
EP222824 (P138-12)			1- 1/2			
EP222832 (P138-16)			2			
EP222840 (P138-20)			2- 1/2			
EP222848 (P138-24)	3					
AA1708-5 AA1708-2 AA1708	1.3800	1.7530	1- 1/2 2 2- 1/2			
1- 7/16 X 1- 5/8 NOMINAL						
EP232616 (P143-8)			1.4410	1.6300	1	
EP232624 (P143-12)	1- 1/2					
EP232632 (P143-16)	2					
AA1609-2 AA1609-4 AA1609 AA1609-6	1.4380	1.6280	1 1- 1/2 2 2- 1/4			

# Powdered Metal Plane Bearings

## SAE 841 Bronze



PART NUMBER	I.D.	O.D.	LENGTH		
1- 7/16 X 1- 3/4 NOMINAL					
EP232816 (P144-8)	1.4410	1.7550	1		
EP232820 (P144-10)			1- 1/4		
EP232824 (P144-12)			1- 1/2		
EP232828 (P144-14)			1- 3/4		
EP232832 (P144-16)			2		
EP232840 (P144-20)			2- 1/2		
EP232848 (P144-24)			3		
AA1703-1			1.4425	1.7535	7/8
AA1703-14					1- 1/8
AA1703-4	1- 1/4				
AA1703-6	1- 1/2				
AA1703-3	1- 3/4				
AA1703	1- 7/8				
AA1703-7	2				
AA1703-10	2- 1/4				
AA1703-5	2- 1/2				
1- 1/2 X 1-11/16 NOMINAL					
AA1612-4	1.5070	1.6910	3/4		
AA1612-1			1		
1- 1/2 X 1- 3/4 NOMINAL					
EP242808 (P150-4)	1.5040	1.7550	1/2		
EP242810 (P150-5)			5/8		
EP242812 (P150-6)			3/4		
EP242814 (P150-7)			7/8		
EP242816 (P150-8)			1		
EP242820 (P150-10)			1- 1/4		
EP242822 (P150-11)			1- 3/8		

PART NUMBER	I.D.	O.D.	LENGTH
EP242824 (P150-12)	1.5040	1.7550	1- 1/2
EP242828 (P150-14)			1- 3/4
EP242832 (P150-16)			2
EP242836 (P150-18)			2- 1/4
EP242840 (P150-20)			2- 1/2
EP242848 (P150-24)			3
AA1704-20			1.5030
AA1704-21	5/8		
AA1704-16	3/4		
AA1704-4	7/8		
AA1704-15	1		
AA1704-17	1- 1/8		
AA1704-11	1- 1/4		
AA1704-5	1- 3/8		
AA1704	1- 1/2		
AA1704-3	1- 3/4		
AA1704-2	2		
AA1704-7	2- 1/4		
AA1704-8	2- 1/2		
AA1704-9	3		
AA1704-19	3- 1/2		
1- 1/2 X 1-13/16 NOMINAL			
EP242916 (P151-8)	1.5040	1.8175	1
EP242924 (P151-12)			1- 1/2
EP242926 (P151-13)			1- 5/8
AA1801-1	1.5020	1.8150	1
AA1801			1- 5/8
1- 1/2 X 1- 7/8 NOMINAL			
EP243024 (P152-12)	1.5040	1.8800	1- 1/2
EP243032 (P152-16)			2



## Powdered Metal Plane Bearings SAE 841 Bronze

PART NUMBER	I.D.	O.D.	LENGTH
EP243040 (P152-20)	1.5040	1.8800	2- 1/2
EP243044 (P152-22)			2- 3/4
EP243048 (P152-24)			3
AA1807-9 AA1807-10 AA1807 AA1807-11 AA1807-1 AA1807-2	1.5030	1.8780	1- 1/2 1- 3/4 2 2- 1/2 2- 3/4 3
1- 1/2 X 2 NOMINAL			
EP243216 (P153-8)	1.5040	2.0050	1
EP243224 (P153-12)			1- 1/2
EP243232 (P153-16)			2
EP243240 (P153-20)			2- 1/2
EP243248 (P153-24)			3
EP243256 (P153-28)			3- 1/2
AA2007-6 AA2007-2 AA2007-3 AA2007-5			1.5030
1- 5/8 X 1- 7/8 NOMINAL			
EP263020 (P162-10)	1.6290	1.8800	1- 1/4
EP263024 (P162-12)			1- 1/2
EP263028 (P162-14)			1- 3/4
EP263032 (P162-16)			2
EP263036 (P162-18)			2- 1/4

PART NUMBER	I.D.	O.D.	LENGTH
EP263040 (P162-20)	1.6290	1.8800	2- 1/2
EP263048 (P162-24)			3
AA1803-10 AA1803-11 AA1803-13 AA1803-14 AA1803-7 AA1803-1 AA1803-15	1.6270	1.8790	1 1- 1/4 1- 1/2 1- 3/4 2 2- 1/4 2- 3/4
1- 5/8 X 2 NOMINAL			
EP263216 (P163-8)	1.6290	2.0050	1
EP263224 (P163-12)			1- 1/2
EP263232 (P163-16)			2
EP263240 (P163-20)			2- 1/2
EP263248 (P163-24)			3
AA2000-5 AA2000-1 AA2000-3 AA2000-4			1.6265
1-11/16 X 2- 3/16 NOMINAL			
EP273528 (P168-14)	1.6915	2.1925	1- 3/4
EP273532 (P168-16)			2
EP273548 (P168-24)			3
EP273564 (P168-32)			4
AA2107-1 AA2107	1.6905	2.1915	2 4
1- 3/4 X 1-15/16 NOMINAL			
AA1904-2 AA1904-3	1.7525	1.9415	1- 1/4 1- 1/2

# Powdered Metal Plane Bearings

## SAE 841 Bronze



PART NUMBER	I.D.	O.D.	LENGTH				
1- 3/4 X 2 NOMINAL							
EP283216 (P175-8)	1.7540	2.0050	1				
EP283220 (P175-10)			1- 1/4				
EP283224 (P175-12)			1- 1/2				
EP283228 (P175-14)			1- 3/4				
EP283232 (P175-16)			2				
EP283240 (P175-20)			2- 1/2				
EP283248 (P175-24)			3				
AA2001-11 AA2001-3 AA2001 AA2001-9 AA2001-1 AA2001-13 AA2001-2			1.7530	2.0040	1 1- 1/2 1- 7/8 2 2- 1/2 2- 3/4 3		
1- 3/4 X 2- 1/8 NOMINAL							
EP283424 (P176-12)	1.7540	2.1300			1- 1/2		
EP283432 (P176-16)					2		
EP283448 (P176-24)					3		
AA2112-8 AA2112-1 AA2112-2 AA2112-3	1.7540	2.1280			1/2 1- 1/2 2 2- 1/2		
1- 3/4 X 2- 1/4 NOMINAL							
AA2204-2 AA2204-3 AA2204					1.7530	2.2530	2 2- 1/2 3
1- 7/8 X 2- 1/4 NOMINAL							
AA2202-10 AA2202 AA2202-1	1.8780	2.2540	3/4 2 2- 1/2				

PART NUMBER	I.D.	O.D.	LENGTH		
AA2202-2	1.8780	2.2540	3		
1-15/16 X 2- 1/8 NOMINAL					
AA2102-3 AA2102-1	1.9400	2.1285	2 2- 1/2		
1-15/16 X 2- 5/16 NOMINAL					
EP313732 (P193-16)	1.9415	2.3175	2		
EP313740 (P193-20)			2- 1/2		
EP313748 (P193-24)			3		
EP313764 (P193-32)			4		
AA2306-3 AA2306-5 AA2306			1.9405	2.3165	2 3 4
1-15/16 X 2- 7/16 NOMINAL					
AA2403-1 AA2403-2	1.9420	2.4415			1- 1/2 2
2 X 2- 1/4 NOMINAL					
EP323612 (P200-6)	2.0040	2.2550	3/4		
EP323616 (P200-8)			1		
EP323624 (P200-12)			1- 1/2		
EP323632 (P200-16)			2		
EP323640 (P200-20)			2- 1/2		
EP323648 (P200-24)			3		
AA2203-5 AA2203-6 AA2203-7 AA2203 AA2203-9 AA2203-10			2.0030	2.2540	3/4 1 1- 1/2 2 2- 1/2 3



## Powdered Metal Plane Bearings SAE 841 Bronze

PART NUMBER	I.D.	O.D.	LENGTH		
2 X 2- 3/8 NOMINAL					
EP323818 (P201-9)	2.0040	2.3800	1- 1/8		
EP323824 (P201-12)			1- 1/2		
EP323828 (P201-14)			1- 3/4		
EP323832 (P201-16)			2		
EP323840 (P201-20)			2- 1/2		
EP323844 (P201-22)			2- 3/4		
EP323848 (P201-24)			3		
EP323856 (P201-28)			3- 1/2		
EP323864 (P201-32)			4		
AA2304-6 AA2304-7 AA2304 AA2304-1 AA2304-2 AA2304-3 AA2304-4 AA2304-5			2.0030	2.3790	1- 1/8 1- 1/2 1- 3/4 2 2- 1/2 3 3- 1/2 4
2 X 2- 1/2 NOMINAL					
EP324016 (P202-8)	2.0040	2.5050			1
EP324024 (P202-12)					1- 1/2
EP324032 (P202-16)					2
EP324040 (P202-20)					2- 1/2
EP324048 (P202-24)					3
EP324056 (P202-28)					3- 1/2
EP324064 (P202-32)			4		

PART NUMBER	I.D.	O.D.	LENGTH				
AA2501-1 AA2501-2 AA2501-3 AA2501	2.0030	2.5030	1- 1/2 2 2- 1/2 3				
2- 3/16 X 2- 3/8 NOMINAL							
AA2303-1			2.1900	2.3790	1- 1/2		
2- 1/4 X 2- 5/8 NOMINAL							
EP364232 (P225-16) EP364240 (P225-20) EP364248 (P225-24)	2.2540	2.6310	2 2- 1/2 3				
AA2605-3 AA2605-5 AA2605 AA2605-2			2.2540	2.6295	2 3 3- 1/2 4- 1/2		
2- 1/4 X 2- 3/4 NOMINAL							
EP364432 (P226-16) EP364448 (P226-24)					2.2540	2.7560	2 3
AA2703-1 AA2703-2 AA2703	2.2530	2.7530					1- 1/2 2 3
2- 3/8 X 2- 5/8 NOMINAL							
AA2602-3 AA2602	2.3770	2.6295	1- 1/4 1- 5/8				
2- 3/8 X 2- 3/4 NOMINAL							
EP384432 (P237-16) EP384440 (P237-20) EP384448 (P237-24)	2.3790	2.7560	2 2- 1/2 3				
AA2701-2 AA2701-6 AA2701			2.3790	2.7530	2 2- 1/2 3		

# Powdered Metal Plane Bearings

## SAE 841 Bronze



PART NUMBER	I.D.	O.D.	LENGTH		
2- 1/2 X 2- 3/4 NOMINAL					
EP404432 (P250-16)	2.5050	2.7560	2		
EP404448 (P250-24)			3		
EP404464 (P250-32)			4		
AA2702-5 AA2702-4 AA2702-1	2.5050	2.7540	2 2- 1/2 3		
2- 1/2 X 2- 7/8 NOMINAL					
EP404636 (P251-18)			2.5050	2.8810	2- 1/4
EP404640 (P251-20)	2- 1/2				
EP404648 (P251-24)	3				
AA2803-1 AA2803-3 AA2803-2	2.5040	2.8800	2- 1/4 2- 1/2 3		
2- 1/2 X 3 NOMINAL					
EP404832 (P252-16)			2.5050	3.0060	2
EP404848 (P252-24)	3				
EP404864 (P252-32)	4				
AA3005-7 AA3005-4 AA3005-1 AA3005	2.5040	3.0050	2 2- 1/2 3 4		
2- 3/4 X 3 NOMINAL					
AA3006-1 AA3006			2.7530	3.0050	1- 1/2 2- 1/2
2- 3/4 X 3- 1/8 NOMINAL					
AA3100-7 AA3100 AA3100-11	2.7530	3.1290	1- 1/4 2- 3/4 4		

PART NUMBER	I.D.	O.D.	LENGTH		
2- 3/4 X 3- 1/4 NOMINAL					
EP445232 (P275-16)	2.7550	3.2570	2		
EP445248 (P275-24)			3		
EP445264 (P275-32)			4		
AA3201-1 AA3201-4 AA3201-7 AA3201	2.7520	3.2540	1- 1/2 2 3 4		
2-15/16 X 3- 5/16 NOMINAL					
AA3301-3			2.9400	3.3150	3
3 X 3- 1/4 NOMINAL					
EP485232 (P300-16)	3.0060	3.2570	2		
EP485248 (P300-24)			3		
AA3200-5 AA3200 AA3200-2	3.0020	3.2550	1- 1/4 2 3		
3 X 3- 1/2 NOMINAL					
EP485632 (P301-16)			3.0060	3.5070	2
EP485640 (P301-20)	2- 1/2				
EP485648 (P301-24)	3				
EP485664 (P301-32)	4				
AA3502-7 AA3502-8 AA3502-3	3.0040	3.5050	2- 1/2 3 4		
3- 1/4 X 3- 5/8 NOMINAL					
AA3600-5			3.2530	3.6280	4
3- 1/2 X 4 NOMINAL					
EP566432 (P350-16)	3.5070	4.0080	2		



## Powdered Metal Plane Bearings SAE 841 Bronze

PART NUMBER	I.D.	O.D.	LENGTH
EP566448 (P350-24)	3.5070	4.0080	3
EP566456 (P350-28)			3- 1/2
EP566464 (P350-32)			4
AA4000-3 AA4000-5 AA4000-6 AA4000	3.5035	4.0040	2 3 3- 1/2 4
4 X 4- 1/2 NOMINAL			
EP647264 (P400-32)	4.0080	4.5090	4

PART NUMBER	I.D.	O.D.	LENGTH
AA4500 AA4500-2	4.0035	4.5040	4 6
4 X 4- 5/8 NOMINAL			
AA4600-5	4.0030	4.6280	4
4- 1/2 X 5- 1/4 NOMINAL			
AA5201	4.5040	5.2545	5
5 X 5- 3/4 NOMINAL			
AA5700-1	5.0040	5.7550	2

# Powdered Metal Flange Bearings

## SAE 841 Bronze



PART NUMBER	I.D.	O.D.	LENGTH	FLANGE	
				O.D.	THK.
1/8 X 1/4 NOMINAL					
FF207-2 FF207-3	.1260	.2520	1/4 3/8	5/16	1/16
1/8 X 5/16 NOMINAL					
FFB25-2 FFB25-3	.1270	.3150	1/4 3/8	3/8	3/64
3/16 X 5/16 NOMINAL					
EF030503 (FL19-1.5)	.1895	.3155	3/16	7/16	1/16
EF030504 (FL19-2)			1/4		
EF030505 (FL19-2.5)			5/16		
EF030506 (FL19-3)			3/8		
EF030508 (FL19-4)			1/2		
FF313-1 FF313-2			.1870		
FF303-1 FF303-3 FF303-2 FF303 FF303-4	.1895	.3140	3/16 1/4 5/16 3/8 1/2	7/16	1/16
FFB35-1 FFB35-2 FFB35-3	.1890	.3145	1/8 1/4 3/8	3/8	3/64
3/16 X 3/8 NOMINAL					
FF307 FF307-2	.1895	.3765	3/8 1/2	7/16	1/16
1/4 X 3/8 NOMINAL					
EF040603 (FL26-1.5)	.2520	.3780	3/16	1/2	1/16
EF040604 (FL26-2)			1/4		
EF040606 (FL26-3)			3/8		
EF040607 (FL26-3.5)			7/16		



# Powdered Metal Flange Bearings

## SAE 841 Bronze

PART NUMBER	I.D.	O.D.	LENGTH	FLANGE	
				O.D.	THK.
EF040608 (FL26-4)	.2520	.3780	1/2	1/2	1/16
EF040610 (FL26-5)			5/8		
EF040612 (FL26-6)			3/4		
FF310 FF310-3 FF310-4 FF310-1 FF310-5 FF310-2 FF310-7 FF310-10	.2500	.3810	3/16	1/2	1/16
			1/4		
			5/16		
			3/8		
			7/16		
			1/2		
			9/16		
			11/16		
FF300	.2520	.3775	3/8	15/32	3/64
FF312 FF312-1 FF312-2	.2520	.3775	1/4 3/8 1/2	15/32	1/16
FF375-1	.2530	.3770	1/2	1/2	1/16
FFB46-2 FFB46-3 FFB46-4 FFB46-5 FFB46-6	.2520	.3770	1/4	1/2	3/64
			3/8		
			1/2		
			5/8		
			3/4		
1/4 X 7/16 NOMINAL					
FF435-1	.2510	.4395	1/2	1/2	1/16
1/4 X 1/2 NOMINAL					
FF565-2 FF565-3	.2520	.5030	5/8	5/8	1/16
			3/4		
5/16 X 3/8 NOMINAL					
FFB56-3	.3140	.3770	3/8	1/2	3/64
5/16 X 7/16 NOMINAL					
EF050706 (FL32-3)	.3145	.4405	3/8	9/16	1/16
EF050708 (FL32-4)			1/2		
EF050712 (FL32-6)			3/4		

# Powdered Metal Flange Bearings

## SAE 841 Bronze



PART NUMBER	I.D.	O.D.	LENGTH	FLANGE	
				O.D.	THK.
FF411-1 FF411-2 FF411-4	.3125	.4400	3/8 1/2 7/8	9/16	1/16
FFB57-3 FFB57-6	.3140	.4390	3/8 3/4	5/8	3/32
5/16 X 1/2 NOMINAL					
EF050806 (FL33-3)	.3145	.5030	3/8	11/16	1/16
FF501-2	.3135	.5020	3/8	9/16	1/16
FFB58-3 FFB58-4 FFB58-5	.3140	.5020	3/8 1/2 5/8	11/16	3/32
3/8 X 1/2 NOMINAL					
EF060804 (FL38-2) EF060806 (FL38-3) EF060808 (FL38-4) EF060812 (FL38-6) EF060816 (FL38-8)	.3770	.5030	1/4 3/8 1/2 3/4 1	11/16	1/16
FF520-15 FF520-9 FF520-10 FF520-5	.3765	.5020	1/4 5/16 3/8 1/2	5/8	1/16
FF512-2 FF512-3	.3765	.5030	1/2 5/8	5/8	3/32
FF519-2	.3780	.5030	1/2	3/4	3/32
FFB68-3 FFB68-3.5 FFB68-4 FFB68-5 FFB68-6 FFB68-8 FFB68-10	.3770	.5020	3/8 13/32 1/2 5/8 3/4 1 1- 1/4	11/16	3/32



# Powdered Metal Flange Bearings

## SAE 841 Bronze

PART NUMBER	I.D.	O.D.	LENGTH	FLANGE	
				O.D.	THK.
3/8 X 9/16 NOMINAL					
EF060908 (FL39-4)	.3770	.5655	1/2	11/16	1/16
EF060912 (FL39-6)			3/4		
FF503-6 FF503-4 FF503	.3760	.5640	1/2 11/16 13/16	.7400	1/16
FFB69-6 FFB69-10	.3770	.5645	3/4 1- 1/4	3/4	1/8
3/8 X 5/8 NOMINAL					
EF061008 (FL40-4)	.3770	.6280	1/2	7/8	1/16
EF061012 (FL40-6)			3/4		
EF061016 (FL40-8)			1		
EF061020 (FL40-10)			1- 1/4		
FF607-2 FF607-3 FF607-1	.3760	.6270	1/2 3/4 1- 1/4	7/8	1/16
FFB610-4 FFB610-6 FFB610-10	.3770	.6270	1/2 3/4 1- 1/4	7/8	1/8
3/8 X 3/4 NOMINAL					
FFB612-4	.3770	.7530	1/2	1	1/8
7/16 X 9/16 NOMINAL					
EF070908 (FL43-4)	.4395	.5655	1/2	11/16	1/16
EF070912 (FL43-6)			3/4		
FF504-3 FF504 FF504-1	.4390	.5650	1/2 5/8 3/4	11/16	1/16

# Powdered Metal Flange Bearings

## SAE 841 Bronze



PART NUMBER	I.D.	O.D.	LENGTH	FLANGE	
				O.D.	THK.
7/16 X 5/8 NOMINAL					
EF071012 (FL44-6)	.4395	.6280	3/4	7/8	1/8
EF071020 (FL44-10)			1- 1/4		
FF608-3 FF608	.4385	.6270	3/4 1- 1/4	7/8	1/8
FFB710-5 FFB710-10	.4390	.6280	5/8 1- 1/4	7/8	1/8
1/2 X 5/8 NOMINAL					
EF081005 (FL50-2.5)	.5020	.6280	5/16	7/8	1/8
EF081006 (FL50-3)			3/8		
EF081008 (FL50-4)			1/2		
EF081010 (FL50-5)			5/8		
EF081012 (FL50-6)			3/4		
EF081016 (FL50-8)			1		
EF081020 (FL50-10)			1- 1/4		
EF081024 (FL50-12)			1- 1/2		
FF636-3 FF636-2	.5020	.6270	5/16 3/8	3/4	3/32
FF620-1 FF620-5 FF620-7 FF620 FF620-2 FF620-6 FF620-3 FF620-4	.5020	.6270	1/2 9/16 5/8 11/16 3/4 15/16 1 1- 1/8	7/8	1/16
FF600-5 FF600-2 FF600	.5020	.6270	1/2 1 1- 3/4	31/32	3/32



## Powdered Metal Flange Bearings SAE 841 Bronze

PART NUMBER	I.D.	O.D.	LENGTH	FLANGE	
				O.D.	THK.
FFB810-4 FFB810-5 FFB810-6 FFB810-8 FFB810-10 FFB810-12	.5020	.6280	1/2 5/8 3/4 1 1- 1/4 1- 1/2	7/8	1/8
1/2 X 11/16 NOMINAL					
EF081105 (FL51-2.5) EF081108 (FL51-4) EF081112 (FL51-6)	.5020	.6905	5/16  1/2  3/4	7/8	1/8
FF609-1 FF609-3 FF609-4 FF609	.5020	.6910	5/16 1/2 3/4 13/16	13/16	1/16
FF604-2 FF604-1 FF604	.5020	.6910	1/2 3/4 13/16	31/32	3/32
FFB811-4 FFB811-6	.5020	.6900	1/2 3/4	15/16	1/8
1/2 X 3/4 NOMINAL					
EF081208 (FL52-4) EF081210 (FL52-5) EF081212 (FL52-6) EF081216 (FL52-8) EF081220 (FL52-10)	.5020	.7530	1/2  5/8  3/4  1  1- 1/4	1	1/8
FF707-5 FF707-2 FF707-3	.5020	.7530	1/2 3/4 1	15/16	1/8
FF710	.5030	.7530	3/4	15/16	1/8
FF723-5 FF723-1 FF723	.5050	.7530	3/8 1/2 5/8	1	1/8

# Powdered Metal Flange Bearings

## SAE 841 Bronze



PART NUMBER	I.D.	O.D.	LENGTH	FLANGE	
				O.D.	THK.
FFB812-4 FFB812-6 FFB812-7 FFB812-8 FFB812-10 FFB812-12	.5020	.7530	1/2 3/4 7/8 1 1- 1/4 1- 1/2	1	1/8
9/16 X 3/4 NOMINAL					
FFB912-8	.5650	.7530	1	1	1/8
5/8 X 3/4 NOMINAL					
EF101210 (FL62-5) EF101212 (FL62-6) EF101216 (FL62-8) EF101218 (FL62-9)	.6270	.7530	5/8 3/4 1 1- 1/8	1	1/8
FF703-3 FF703-7 FF703-1 FF703 FF703-6	.6265	.7525	5/8 3/4 1 1- 1/8 1- 1/4	1	3/32
FF718-1 FF718-3 FF718-6	.6275	.7525	1/2 1 1- 1/8	7/8	1/16
FFB1012-4 FFB1012-5 FFB1012-6 FFB1012-8 FFB1012-10	.6260	.7530	1/2 5/8 3/4 1 1- 1/4	1	1/8
5/8 X 13/16 NOMINAL					
EF101312 (FL63-6) EF101316 (FL63-8) EF101320 (FL63-10) EF101324 (FL63-12)	.6270	.8165	3/4 1 1- 1/4 1- 1/2	1	1/8
FF823-3 FF823	.6250	.8150	1 1- 1/4	1	1/8



# Powdered Metal Flange Bearings

## SAE 841 Bronze

PART NUMBER	I.D.	O.D.	LENGTH	FLANGE	
				O.D.	THK.
FF842-1 FF842-2 FF842-3	.6260	.8150	1/2 3/4 1	1	1/8
FF806-1 FF806	.6280	.8160	3/4 1- 7/16	1- 1/4	1/8
FF805-2 FF805 FF805-3	.6295	.8155	1/2 3/4 1	1	1/8
FFB1013-6 FFB1013-8 FFB1013-10 FFB1013-11.5 FFB1013-12	.6270	.8150	3/4 1 1- 1/4 1- 7/16 1- 1/2	1- 1/16	5/32
5/8 X 7/8 NOMINAL					
EF101408 (FL64-4) EF101410 (FL64-5) EF101412 (FL64-6) EF101416 (FL64-8) EF101420 (FL64-10)	.6270	.8790	1/2  5/8 3/4 1 1- 1/4	1- 1/8	1/8
FF843-4 FF843 FF843-2 FF843-3	.6270	.8770	5/8 3/4 1 1- 1/4	1	1/8
FFB1014-6 FFB1014-8 FFB1014-14	.6270	.8780	3/4 1 1- 3/4	1- 1/8	5/32
5/8 X 1 NOMINAL					
EF101616 (FL66-8)	.6270	1.0040	1	1- 1/4	3/16
3/4 X 7/8 NOMINAL					
EF121408 (FL75-4) EF121412 (FL75-6)	.7520	.8790	1/2  3/4	1- 1/8	1/8

# Powdered Metal Flange Bearings

## SAE 841 Bronze



PART NUMBER	I.D.	O.D.	LENGTH	FLANGE	
				O.D.	THK.
FF838-1 FF838-3	.7510	.8770	1/2 1	1	1/16
FFB1214-6 FFB1214-8	.7520	.8780	3/4 1	1- 1/8	5/32
3/4 X 15/16 NOMINAL					
EF121509 (FL76-4.5)	.7520	.9415	9/16	1- 1/4	1/8
EF121512 (FL76-6)			3/4		
EF121516 (FL76-8)			1		
EF121518 (FL76-9)			1- 1/8		
EF121520 (FL76-10)			1- 1/4		
EF121524 (FL76-12)			1- 1/2		
FF911-3 FF911-4			.7505		
FF901-4 FF901-6 FF901-8 FF901	.7530	.9380	9/16 3/4 1- 1/4 1- 9/16	1- 5/16	1/8
FF905	.7530	.9405	1- 1/8	1.175	1/8
FFB1215-8 FFB1215-12	.7520	.9400	1 1- 1/2	1- 3/16	5/32
3/4 X 1 NOMINAL					
EF121610 (FL77-5)	.7520	1.0040	5/8	1- 1/4	3/16
EF121612 (FL77-6)			3/4		
EF121616 (FL77-8)			1		
EF121618 (FL77-9)			1- 1/8		
EF121620 (FL77-10)			1- 1/4		
EF121624 (FL77-12)			1- 1/2		



# Powdered Metal Flange Bearings

## SAE 841 Bronze

PART NUMBER	I.D.	O.D.	LENGTH	FLANGE	
				O.D.	THK.
FF1011-2 FF1011 FF1011-4 FF1011-1	.7505	1.0020	1/2 5/8 1 1- 1/8	1- 7/16	1/8
FF1013-2 FF1013 FF1013-3 FF1013-4	.7510	1.0020	3/4 1 1- 1/4 1- 1/2	1- 1/2	1/8
FF1014-2 FF1014	.7520	1.0020	3/4 1	1- 5/16	1/8
FF1015-1 FF1015-2 FF1015	.7530	1.0030	1/2 3/4 1	1- 1/8	1/8
FFB1216-6 FFB1216-8 FFB1216-10 FFB1216-12 FFB1216-16	.7520	1.0030	3/4 1 1- 1/4 1- 1/2 2	1- 1/4	5/32
3/4 X 1- 1/16 NOMINAL					
FF1010	.7520	1.0655	1- 3/16	1- 3/16	1/8
7/8 X 1 NOMINAL					
EF141608 (FL87-4) EF141612 (FL87-6) EF141616 (FL87-8)	.8770	1.0040	1/2 3/4 1	1- 1/4	3/16
FF1001-2 FF1001-1 FF1001	.8765	1.0030	5/8 3/4 1	1- 1/4	1/8
FFB1416-6 FFB1416-10	.8770	1.0030	3/4 1- 1/4	1- 1/4	5/32
7/8 X 1- 1/8 NOMINAL					
EF141812 (FL89-6) EF141816 (FL89-8) EF141820 (FL89-10)	.8770	1.1290	3/4 1 1- 1/4	1- 1/2	1/8

# Powdered Metal Flange Bearings

## SAE 841 Bronze



PART NUMBER	I.D.	O.D.	LENGTH	FLANGE	
				O.D.	THK.
EF141824 (FL89-12)	.8770	1.1290	1- 1/2	1-1/2	1/8
EF141828 (FL89-14)			1- 3/4		
FF1102-6 FF1102-2 FF1102-3 FF1102	.8770	1.1280	5/8 1 1- 1/4 1- 3/4	1- 1/2	1/8
FFB1418-8 FFB1418-12	.8770	1.1280	1 1- 1/2	1- 3/8	5/32
1 X 1- 1/4 NOMINAL					
EF162012 (FL102-6)	1.0030	1.2540	3/4	1- 1/2	1/8
EF162016 (FL102-8)			1		
EF162020 (FL102-10)			1- 1/4		
EF162024 (FL102-12)			1- 1/2		
FF1213-1 FF1213-4	1.0010	1.2520	3/4 1- 1/2	1- 1/2	1/8
FF1202-4 FF1202-3 FF1202	1.0010	1.2530	3/4 1 1- 1/4	1- 7/8	1/8
FF1207-5 FF1207-7 FF1207-3 FF1207	1.0020	1.2520	3/4 1- 1/4 1- 1/2 1- 3/4	1- 5/8	1/8
FFB1620-6 FFB1620-8 FFB1620-10 FFB1620-12 FFB1620-16	1.0020	1.2530	3/4 1 1- 1/4 1- 1/2 2	1- 1/2	3/16
1 X 1- 5/16 NOMINAL					
FF1302 FF1302-3	1.0010	1.3160	1- 1/4 1- 1/2	1- 3/4	7/32
FF1301	1.0015	1.3155	1- 1/2	1- 7/8	1/8



# Powdered Metal Flange Bearings

## SAE 841 Bronze

PART NUMBER	I.D.	O.D.	LENGTH	FLANGE	
				O.D.	THK.
1 X 1- 3/8 NOMINAL					
EF162212 (FL104-6)	1.0030	1.3790	3/4	1- 5/8	3/16
EF162216 (FL104-8)			1		
EF162224 (FL104-12)			1- 1/2		
EF162228 (FL104-14)			1- 3/4		
EF162232 (FL104-16)			2		
FF1304 FF1304-1	1.0000	1.3785	1- 3/4 2	1- 3/4	3/16
FFB1622-8 FFB1622-14	1.0020	1.3780	1 1- 3/4	1- 5/8	3/16
1- 1/8 X 1- 3/8 NOMINAL					
FF1314-1 FF1314-2 FF1314-3	1.1270	1.3770	3/4 1 1- 1/4	1- 3/4	1/8
1- 1/4 X 1- 1/2 NOMINAL					
EF202416 (FL125-8)	1.2535	1.5040	1	1- 3/4	3/16
EF202420 (FL125-10)			1- 1/4		
EF202424 (FL125-12)			1- 1/2		
EF202428 (FL125-14)			1- 3/4		
FF1505-5 FF1505	1.2515	1.5030	1/2 1- 1/4	1-11/16	1/8
FF1506-4 FF1506-5	1.2520	1.5030	1- 1/2 1- 3/4	2	3/32
FFB2024-10	1.2520	1.5030	1- 1/4	1- 3/4	3/16
1- 3/8 X 1- 5/8 NOMINAL					
FF1618 FF1618-1	1.3770	1.6280	3/4 1	2	1/8

# Powdered Metal Flange Bearings

## SAE 841 Bronze



PART NUMBER	I.D.	O.D.	LENGTH	FLANGE	
				O.D.	THK.
1- 1/2 X 1- 3/4 NOMINAL					
EF242824 (FL150-12)	1.5040	1.7550	1- 1/2	2	3/16
FF1704-4	1.5030	1.7520	1- 1/2	2	3/32
FFB2428-12	1.5030	1.7540	1- 1/2	2- 1/16	3/16
1- 5/8 X 2 NOMINAL					
EF263232 (FL163-16)	1.6290	2.0050	2	2- 1/4	3/16
FF2000	1.6265	2.0040	2	2- 1/4	3/16
1- 3/4 X 2- 1/4 NOMINAL					
EF283640 (FL177-20)	1.7540	2.2550	2- 1/2	3	1/4
FF2204-3	1.7530	2.2540	2- 1/2	3	1/4
2 X 2- 1/4 NOMINAL					
EF323632 (FL200-16)	2.0040	2.2550	2	2- 1/2	1/8
FF2203-2 FF2203-3 FF2203-4	2.0030	2.2540	3/4 1 1- 1/4	2- 1/2	1/8
2 X 2- 1/2 NOMINAL					
FF2501	2.0020	2.5010	2- 3/8	3	3/8
2- 3/4 X 3- 1/4 NOMINAL					
FF3200-4	2.7520	3.2500	1- 1/2	4- 1/2	3/16
3 X 3- 1/2 NOMINAL					
FF3500	3.0020	3.5020	2- 3/8	4	3/8



## Powdered Metal Thrust Bearings SAE 841 Bronze

PART NUMBER	I.D.	O.D.	THK.
1/4 X 7/16 NOMINAL			
TT400	.2550	.4375	1/16
1/4 X 1/2 NOMINAL			
TT504	.2550	.5000	1/16
1/4 X 5/8 NOMINAL			
EW041001 (TW25)	.2520	.6280	1/16
TT601	.2550	.6250	1/16
5/16 X 5/8 NOMINAL			
TT602	.3145	.6250	1/16
5/16 X 3/4 NOMINAL			
EW051201 (TW31)	.3145	.7530	1/16
TT709-1	.3150	.7500	1/16
3/8 X 5/8 NOMINAL			
TT604	.3850	.6250	1/16
3/8 X 3/4 NOMINAL			
EW061201 (TW37)	.3770	.7530	1/16
EW061202 (TW38)			1/8
TT710-1 TT710-2	.3775	.7500	1/16 1/8
TT703	.3900	.7500	1/32
7/16 X 3/4 NOMINAL			
EW071201 (TW43)	.4395	.7530	1/16
TT705-1	.4385	.7500	1/16
1/2 X 3/4 NOMINAL			
EW081201 (TW50)	.5020	.7530	1/16
TT706	.5070	.7500	1/16
1/2 X 7/8 NOMINAL			
TT801	.5050	.8750	3/16

PART NUMBER	I.D.	O.D.	THK.
1/2 X 1 NOMINAL			
EW081601 (TW51)	.5020	1.0040	1/16
EW081601.5 (TW51.5)			3/32
EW081602 (TW52)			1/8
TT1001 TT1001-2 TT1001-1	.5100	1.0000	1/16 3/32 1/8
9/16 X 1- 1/4 NOMINAL			
EW092001 (TW55)	.5645	1.2540	1/16
EW092002 (TW56)			1/8
TT1200-1 TT1200	.5650	1.2500	1/16 1/8
5/8 X 1 NOMINAL			
EW101601 (TW62)	.6270	1.0040	1/16
EW101602 (TW63)			1/8
TT1002-1 TT1002	.6280	1.0000	1/16 1/8
5/8 X 1- 3/16 NOMINAL			
EW101901 (TW63.5)	.6270	1.1915	1/16
EW101902 (TW64)			3/32
EW101903 (TW64.5)			1/8
TT1102-1 TT1102 TT1102-2	.6270	1.1875	1/16 3/32 1/8
5/8 X 1- 1/4 NOMINAL			
EW102001 (TW64.7)	.6270	1.2540	1/16
EW102002 (TW65)			1/8
TT1204 TT1204-1	.6280	1.2500	1/16 1/8

# Powdered Metal Thrust Bearings

## SAE 841 Bronze



PART NUMBER	I.D.	O.D.	THK.
5/8 X 1- 1/2 NOMINAL			
TT1508-1 TT1508-2	.6560	1.5000	1/16 1/8
3/4 X 1- 1/4 NOMINAL			
EW122001 (TW75) EW122002 (TW76)	.7520	1.2540	1/16 1/8
TT1205 TT1205-1	.7530	1.2500	1/16 1/8
3/4 X 1- 3/8 NOMINAL			
EW122202 (TW77)	.7520	1.3790	1/8
TT1303-1 TT1303-2 TT1303-4	.7530	1.3750	1/16 1/8 1/4
3/4 X 1- 9/16 NOMINAL			
EW122502 (TW78)	.7520	1.5675	3/32
TT1501-1	.7650	1.5625	3/32
3/4 X 1- 3/4 NOMINAL			
EW122802 (TW79)	.7520	1.7550	1/8
TT1701	.7650	1.7500	1/8
7/8 X 1- 1/2 NOMINAL			
EW142401 (TW86) EW142402 (TW87)	.8770	1.5040	1/16 1/8
TT1503-2 TT1503	.8905	1.5000	1/16 1/8
7/8 X 2 NOMINAL			
TT2007	.8800	2.0000	1/8
7/8 X 2- 1/8 NOMINAL			
TT2101-1	.8905	2.1250	1/8

PART NUMBER	I.D.	O.D.	THK.
1 X 1- 1/2 NOMINAL			
EW162401 (TW99) EW162402 (TW100)	1.0030	1.5040	1/16 1/8
TT1502-2 TT1502 TT1502-1	1.0030	1.5040	1/16 1/8 3/16
1 X 1- 5/8 NOMINAL			
EW162601 (TW100.5) EW162602 (TW101) EW162604 (TW101.5)	1.0030	1.6300	1/16 1/8 1/4
TT1603-3 TT1603 TT1603-4	1.0155	1.6250	1/16 1/8 1/4
1 X 1- 3/4 NOMINAL			
TT1709-1 TT1709	1.0120	1.7500	1/16 1/8
1 X 2 NOMINAL			
EW163202 (TW102) EW163203 (TW103)	1.0030	2.0050	1/8 3/16
TT2001 TT2001-1	1.0160	2.0000	1/8 3/16
1 X 2- 7/8 NOMINAL			
TT2800	1.0155	2.8750	1/8
1- 1/16 X 2- 3/8 NOMINAL			
TT2301-4 TT2301-3	1.0625	2.3750	1/16 1/8
1- 1/8 X 1- 7/8 NOMINAL			
TT1800-1	1.1400	1.8750	1/8
1- 1/4 X 1-11/16 NOMINAL			
EW202702 (TW125)	1.2535	1.6925	1/8
TT1602	1.2530	1.6900	1/8



## Powdered Metal Thrust Bearings SAE 841 Bronze

PART NUMBER	I.D.	O.D.	THK.
1- 1/4 X 2 NOMINAL			
EW203201 (TW126.5) EW203202 (TW126)	1.2535	2.0050	1/16 1/8
TT2006 TT2006-1	1.2650	2.0000	1/16 1/8
1- 1/4 X 2- 3/8 NOMINAL			
TT2304-1 TT2304-2	1.2650	2.3750	1/16 1/8
1- 1/4 X 3- 5/16 NOMINAL			
TT3301 TT3301-1	1.2550	3.3120	1/16 1/8
1- 3/8 X 1-15/16 NOMINAL			
TT1900	1.3790	1.9400	1/8
1- 1/2 X 2 NOMINAL			
TT2008	1.5030	2.0000	1/8
1- 1/2 X 2- 1/2 NOMINAL			
EW244002 (TW150)	1.5040	2.5050	1/8
1- 1/2 X 3- 1/2 NOMINAL			
EW245603 (TW151)	1.5040	3.5070	3/16
TT3500-1	1.5100	3.5000	3/16
1- 9/16 X 2- 7/16 NOMINAL			
TT2402	1.5780	2.4375	1/8

PART NUMBER	I.D.	O.D.	THK.
1- 3/4 X 2- 7/16 NOMINAL			
TT2400-1	1.7550	2.4400	1/8
1- 3/4 X 2- 5/8 NOMINAL			
EW284202 (TW175)	1.7540	2.6310	1/8
TT2601	1.7650	2.6250	1/8
1-15/16 X 2- 5/8 NOMINAL			
TT2600	1.9530	2.6250	1/8
2 X 3 NOMINAL			
EW324802 (TW200) EW324804 (TW201)	2.0040	3.0060	1/8 1/4
TT3001-3 TT3001 TT3001-1	2.0110	3.0000	1/8 3/16 1/4
2 X 3- 5/8 NOMINAL			
TT3600	2.0310	3.6250	3/16
2- 1/16 X 4 NOMINAL			
TT4002-1 TT4002	2.0620	4.0000	1/8 1/4
2- 1/2 X 3- 1/4 NOMINAL			
TT3200	2.5020	3.2500	1/8
2- 3/4 X 3- 7/8 NOMINAL			
TT3800	2.7660	3.8750	1/4

# Powdered Metal Bronze Bearing Maintenance Kit

A selection of Bunting quality powdered metal bronze self-lubricating plane bearings are available in a convenient Maintenance Kit.

An excellent choice for MRO needs -- 13 sizes-45 parts

Contact your local Bunting Bearings Authorized Distributor or Regional Service Center for more information.



## The kit contains:

7	EP040512	1/4 x 5/16 x 3/4
5	EP040616	1/4 x 3/8 x 1
4	EP060816	3/8 x 1/2 x 1
8	EP081018	1/2 x 5/8 x 1-1/8
2	EP081118	1/2 x 11/16 x 1-1/8
5	EP081218	1/2 x 3/4 x 1-1/8
2	EP101216	5/8 x 3/4 x 1
6	EP101218	5/8 x 3/4 x 1-1/8
1	EP101432	5/8 x 7/8 x 2
2	EP121632	3/4 x 1 x 2
1	EP141812	7/8 x 1-1/8 x 3/4
1	EP141832	7/8 x 1-1/8 x 2
1	EP162048	1 x 1-1/4 x 3



# Bunting Powdered Metal Cored Bronze Bars SAE 841 Bronze

PART NUMBER	I.D.	O.D.
ET0408 (CC 1000 02)	1/2	1
ET0409 (CC 1103)		1- 1/8
ET0410 (CC 1203)		1- 1/4
ET0412 (CC 1502)		1- 1/2
ET0416 (CC 2005)		2
ET0508 (CC 1001)	5/8	1
ET0509 (CC 1101 01)		1- 1/8
ET0510 (CC 1200 01)		1- 1/4
ET0511 (CC 1302)		1- 3/8
ET0512 (CC 1503)		1- 1/2
ET0514 (CC 1703)		1- 3/4
ET0516 (CC 2006)		2
ET0610 (CC 1201 01)	3/4	1- 1/4
ET0612 (CC 1500 01)		1- 1/2
ET0614 (CC 1702)		1- 3/4
ET0616 (CC 2001)		2
ET0618 (CC 2206)		2- 1/4
ET0620 (CC 2504)		2- 1/2
ET0622 (CC 2704)		2- 3/4
ET0711 (CC 1301)	7/8	1- 3/8
ET0712 (CC 1504)		1- 1/2
ET0716 (CC 2007)		2
ET0718 (CC 2207)		2- 1/4
ET0812 (CC 1501)	1	1- 1/2
ET0813 (CC 1600 01)		1- 5/8
ET0814 (CC 1700 02)		1- 3/4
ET0816 (CC 2002)		2
ET0818 (CC 2202 02)		2- 1/4
ET0820 (CC 2501)		2- 1/2
ET0824 (CC 3001)		3
ET0828 (CC 3504)		3- 1/2
ET0832 (CC 4004)		4
ET0917 (CC 2102)	1- 1/8	2- 1/8
ET1014 (CC 1701 03)	1- 1/4	1- 3/4
ET1016 (CC 2000 01)		2
ET1018 (CC 2203)		2- 1/4
ET1020 (CC 2502)		2- 1/2
ET1024 (CC 3003)		3
ET1028 (CC 3505)		3- 1/2
ET1032 (CC 4005)		4
ET1116 (CC 2003)	1- 3/8	2
ET1122 (CC 2702)		2- 3/4
ET1216 (CC 2004)	1- 1/2	2
ET1218 (CC 2200 01)		2- 1/4
ET1220 (CC 2503)		2- 1/2

PART NUMBER	I.D.	O.D.
ET1222 (CC 2701)	1-1/2	2- 3/4
ET1224 (CC 3002)		3
ET1228 (CC 3502)		3- 1/2
ET1232 (CC 4007)		4
ET1418 (CC 2201 03)	1-3/4	2- 1/4
ET1420 (CC 2500 01)		2- 1/2
ET1421 (CC 2604)		2- 5/8
ET1422 (CC 2703)		2- 3/4
ET1424 (CC 3005)		3
ET1428 (CC 3503)		3- 1/2
ET1434 (CC 4202)		4- 1/4
ET1436 (CC 4502)	4- 1/2	
ET1622 (CC 2700 01)	2	2- 3/4
ET1624 (CC 3000)		3
ET1626 (CC 3201 02)		3- 1/4
ET1632 (CC 4003)		4
ET1636 (CC 4501)		4- 1/2
ET1640 (CC 5000)		5
ET1644 (CC 5500)	5- 1/2	
ET1824 (CC 3006)	2- 1/4	3
ET1826 (CC 3202 01)		3- 1/4
ET1828 (CC 3500 01)		3- 1/2
ET1830 (CC 3703)		3- 3/4
ET1832 (CC 4008)		4
ET1836 (CC 4503)		4- 1/2
ET1924 (CC 3007)	2- 3/8	3
ET1928 (CC 3507)		3- 1/2
ET1932 (CC 4009)		4
ET1936 (CC 4504)	4- 1/2	
ET2028 (CC 3501)	2- 1/2	3- 1/2
ET2030 (CC 3702)		3- 3/4
ET2032 (CC 4010)		4
ET2034 (CC 4203)		4- 1/4
ET2036 (CC 4505)		4- 1/2
ET2040 (CC 5001)	5	
ET2230 (CC 3700 01)	2- 3/4	3- 3/4
ET2430 (CC 3701 01)	3	3- 3/4
ET2432 (CC 4001)		4
ET2436 (CC 4506)		4- 1/2
ET2440 (CC 5002)		5
ET2448 (CC 6000)		6
ET2634 (CC 4200 01)	3- 1/4	4- 1/4
ET2838 (CC 4700 02)	3- 1/2	4- 3/4
ET2840 (CC 5003)		5
ET2848 (CC 6002)		6

Will finish to dimensions shown.  
6-1/2 inch lengths.

## Bunting Powdered Metal Cored Bronze Bars

### SAE 841 Bronze

PART NUMBER	I.D.	O.D.
ET3040 (CC 5004)	3- 3/4	5
ET3244 (CC 5501) ET3248 (CC 6001) ET3256 (CC 7001) ET3264 (CC 8000)@	4	5- 1/2 6 7 8

Will finish to dimensions shown.

PART NUMBER	I.D.	O.D.
ET3648 (CC 6003)	4- 1/2	6
ET4056 (CC 7000)	5	7
ET4864 (CC 8001)	6	8

All 6-1/2 inch lengths except:  
@ 5 inch lengths.

## Bunting Powdered Metal Solid Bronze Bars

### SAE 841 Bronze

PART NUMBER	O.D.
ES0002 (BB 200)# ES0003 (BB 302)@ ES0004 (BB 500) ES0005 (BB 600 01) ES0006 (BB 700 01) ES0007 (BB 800 01)	1/4 3/8 1/2 5/8 3/4 7/8
ES0008 (BB 1000 02) ES0009 (BB 1100) ES0010 (BB 1200 01) ES0011 (BB 1300) ES0012 (BB 1500 02) ES0013 (BB 1600) ES0014 (BB 1700 01)	1 1- 1/8 1- 1/4 1- 3/8 1- 1/2 1- 5/8 1- 3/4
ES0016 (BB 2000 01) ES0018 (BB 2200) ES0020 (BB 2500 01)	2 2- 1/4 2- 1/2

# 2 inch lengths.

@ 3 inch lengths.

PART NUMBER	O.D.
ES0022 (BB 2700 01)	2- 3/4
ES0024 (BB 3000 01) ES0026 (BB 3200 02) ES0028 (BB 3500 01)	3 3- 1/4 3- 1/2
ES0032 (BB 4000 01) ES0036 (BB 4500)	4 4- 1/2
ES0040 (BB 5000) ES0044 (BB 5500)	5 5- 1/2
ES0048 (BB 6000)	6
ES0056 (BB 7000)	7
ES0064 (BB 8000)	8

All other sizes 6-1/2 inch lengths.  
Will finish to dimensions shown.

## Powdered Metal Circular Bronze Discs

### SAE 841 Bronze

PART NUMBER	I.D.	O.D.	THICKNESS ±.0025"
DD 3000 DD 4000 DD 5602 01*	SOLID	3 4 5-5/8	1/4 1/4 1/4



## Powdered Metal Circular Bronze Discs SAE 841 Bronze

PART NUMBER	I.D.	O.D.	THICKNESS ±.0025"
DD 6000*	SOLID	6	5/16
DD 7001**		7	5/16
DD 8000**		8	5/16
DD 8000 03**		8	3/8
CD 3001	1	3	1/4
CD 4001	1	4	1/4
CD 4002	2	4	1/4
CD 5500*	2	5- 1/2	1/4
CD 4502	2- 1/4	4- 1/2	1/4
CD 7000 02*	2-1/4	7	1/4
CD 9001***	3	9	5/16
CD 6003*	4	6	5/16

\* Thickness ±.0035

\*\* Thickness ±.0050

\*\*\*Thickness ±.0040

I.D. and O.D. will finish to dimensions shown.



## Powdered Metal Bronze Plate SAE 841 Bronze

PART NUMBER	WIDTH	LENGTH	THICKNESS ±.005"
PP 2500	1/2	2-1/2	1/4
PP 8100 01	2	8-1/8	1/4
PP 8100			1/2
PP 12100	3	12	1/4
PP 12100 01			1/2
PP 12100 02			3/4
PP 12100 03			1
PP 6000	5	6	1/8
PP 6000 01			3/16
PP 6000 02			1/4
PP 6000 04			3/8
PP 6000 05			1/2
PP 6000 06			5/8
PP 6000 07			3/4
PP 6000 08			1
PP 8000 07	5	8	1/8
PP 8000			3/16
PP 8000 01			1/4
PP 8000 04			1/2
PP 8000 05			3/4
PP 8000 06			1

Width and length will finish to dimensions shown.

# Powdered Metal Bronze Plate

## SAE 841 Bronze

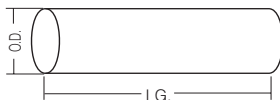
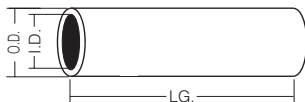
PART NUMBER	WIDTH	LENGTH	THICKNESS ±.005"
PP 12000 06	6	12	1/8
PP 12000 07			3/16
PP 12000			1/4
PP 12000 01			3/8
PP 12000 02			1/2
PP 12000 03			5/8
PP 12000 04			3/4
PP 12000 05	1		

# Powdered Metal Iron Copper Solid Bar

## SAE 863

PART NUMBER	O.D.
2- 1/2" LENGTHS	
SSS 300	3/8
6- 1/2" LENGTHS	
SSS 500	1/2
SSS 600	5/8
SSS 700	3/4
5" LENGTHS	
SSS 800	7/8
SSS 1000	1
SSS 1100	1- 3/16
SSS 1300	1- 5/16
SSS 1400	1- 7/16
SSS 1500	1- 9/16
SSS 1800	1-13/16
SSS 2000	2- 1/16
SSS 2800	2- 7/8

Will finish to dimensions shown.  
Note: Some sizes available in  
6-1/2 inch lengths.



# Powdered Metal Iron Copper Cored Bar

## SAE 863

PART NUMBER	I.D.	O.D.
5" LENGTHS		
SSC 1000	1/2	1
SSC 1402		1- 7/16
SSC 1102	3/4	1- 3/16
SSC 1500		1- 9/16
SSC 1900		1-15/16
SSC 1601	1	1-11/16
SSC 2100		2- 3/16
SSC 1602	1- 1/4	1-11/16
SSC 2103		2- 3/16
SSC 2803		2- 7/8
SSC 1904	1- 1/2	1-15/16
SSC 3805		3- 7/8
SSC 2504	1- 3/4	2- 1/2
SSC 3004		3
SSC 2600	2	2- 5/8
SSC 3005		3
SSC 3301	2- 1/2	3- 3/8
SSC 4102		4- 1/8
SSC 3801	3	3- 7/8
SSC 4802		4- 7/8

Will finish to dimensions shown.