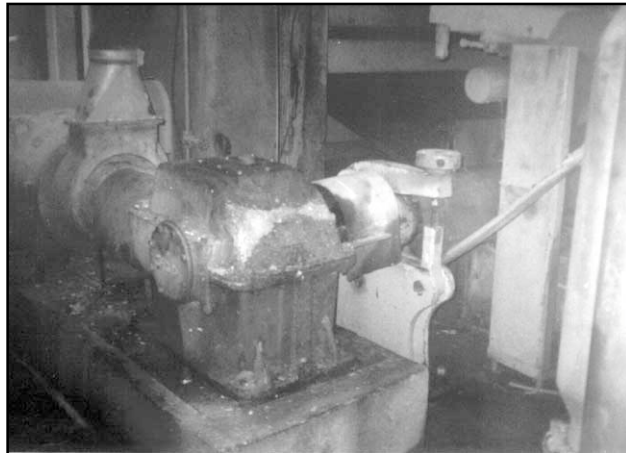


LOCTITE*Adhesives for more
reliable assemblies***APPLICATION CASE HISTORY****No. 210**

LOCTITE® RC™ 609 PROVIDES SUPERIOR FIT FOR COUPLING HUB

*Manufacturing Reliability Training Gives Maintenance Team The Know-How***Problem:**

A paper manufacturer had shut down their number two paper machine to replace a defective coupling hub on the machine's wire drive. During the boring of the new coupling hub, the machinist inadvertently machined the coupling hub approximately 0.002" oversize, and there wasn't another coupling hub in stock.

**Solution:**

The machinist had recently been through the Loctite Manufacturing Reliability Process and knew that Loctite® RC™ 609 Retaining Compound could be used for this application.

RC 609 is a low viscosity, rapid-curing liquid that augments the strength of press-fitted assemblies and can be used on slip fits up to .005" diametrical clearance. It fixtures in 10 minutes on unprimed steel at room temperature and provides a shear strength of 3000 psi at full cure.

The machinist applied RC 609. Two hours after installation of the new coupling hub, the paper machine was started up again.

Results:

Upon review of the operation with Loctite's Pulp and Paper Industry Specialist, the paper mill maintenance team determined that the coupling fit using Loctite RC 609 Retaining Compound was stronger than the interference fit which was originally intended, and no change was made in the installation.

Loctite Americas

U.S.A.
Loctite Corporation
1001 Trout Brook Crossing
Rocky Hill, Connecticut 06067
860-571-5100
Telefax: 860-571-5465

CANADA
Loctite Canada Inc.
2225 Meadowpine Blvd.
Mississauga, Ontario L5N 7P2
800-263-5043 (within Canada)
905-814-6511
Telefax: 905-814-5391

MEXICO
Loctite Company de México, S.A. de C.V.
Calzada de la Viga s/n, Fracc. Los Laureles
Loc. Tulpetlac, C.P. 55090
Ecatepec de Morelos, Edo. de México.
01-800-8499-412
Telefax: 011-525-787-9404