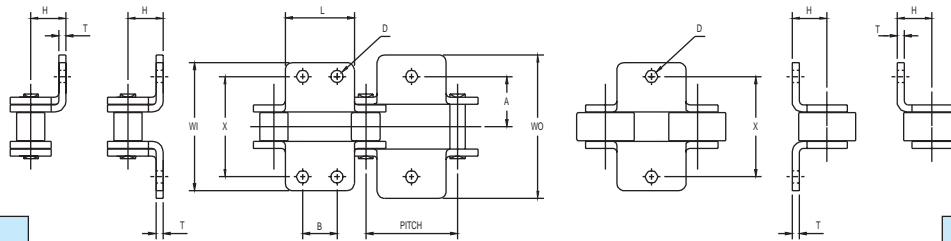


STANDARD ATTACHMENT ROLLER CHAIN

Chain Descriptions and Dimensions

Double-Pitch Bent Attachments Oval Contour Link Plates Standard and Oversized Roller



Others	Diamond
A1	B1 (one hole)
A2	B1 (two holes)

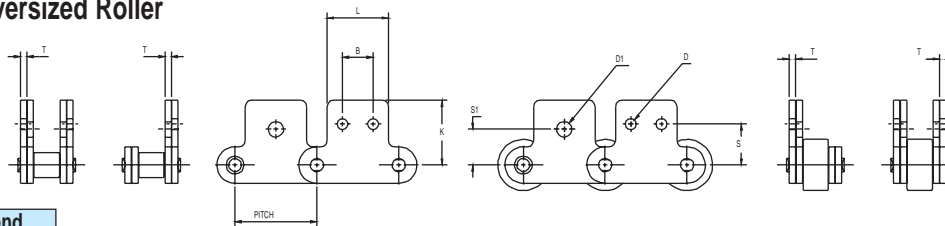
Others	Diamond
K1	B2 (one hole)
K2	B2 (two holes)

Dimensions in Inches

Standard Roller		Pitch Inches	A	B	D	H	L	T	WI	WO	X	Large Roller	
ASME/ANSI #	Roller Diam.											ASME/ANSI #	Roller Diam.
*C2040	.312	1.00	.500	.375	.141	.359	.750	.060	1.350	1.483	1.000	C-2042	.625
*C2050	.400	1.25	.625	.469	.203	.453	.937	.080	1.692	1.863	1.250	C-2052	.750
*C2060H	.469	1.50	.844	.562	.203	.578	1.125	.125	2.171	2.446	1.688	C-2062H	.875
*C2080H	.625	2.00	1.094	.750	.266	.766	1.500	.156	2.792	3.125	2.188	C-2082H	1.125
*C2100H	.750	2.50	1.312	.937	.328	.922	1.875	.187	3.554	3.951	2.625	C-2102H	1.562
*C2120H	.875	3.00	1.562	1.125	.391	1.095	2.250	.219	4.318	4.782	3.125	C-2122H	1.750
*C2160H	1.125	4.00	2.063	1.500	.516	1.438	3.000	.281	5.520	6.116	4.125	C-2162H	2.250

*Two attachment holes stock.
One attachment hole made-to-order.

Double-Pitch Straight Attachments Oval Contour Link Plates Standard and Oversized Roller



Others	Diamond
M-35, SA1	S1 (one hole)
M-35-2, SA2	S1 (two holes)

Others	Diamond
M-1, SK1	S2 (one hole)
M-2, SK2	S2 (two holes)

Dimensions in Inches

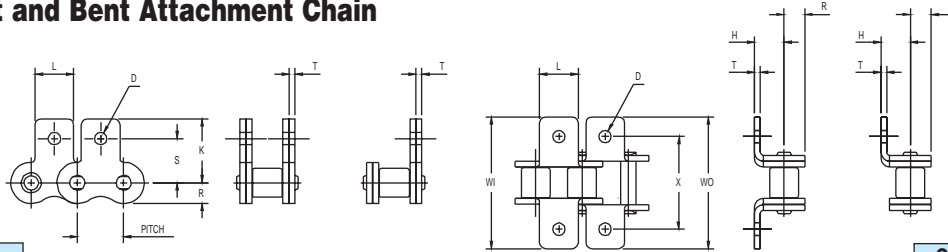
Standard Roller		Pitch Inches	With Two* Attachment Holes			K	L	T	With One Attachment Hole		Large Roller	
ASME/ANSI #	Roller Diam.		B	D	S				D1	S1	ASME/ANSI #	Roller Diam.
*C2040	.312	1.00	.375	.141	.531	.773	.750	.060	.188	.438	C-2042	.625
*C2050	.400	1.25	.469	.203	.625	.971	.937	.080	.250	.563	C-2052	.750
*C2060H	.469	1.50	.562	.203	.750	1.203	1.125	.125	.329	.688	C-2062H	.875
*C2080H	.625	2.00	.750	.266	1.000	1.590	1.500	.156	.375	.875	C-2082H	1.125
*C2100H	.750	2.50	.937	.328	1.250	1.982	1.875	.187	.516	1.125	C-2102H	1.562
*C2120H	.875	3.00	1.125	.391	1.469	2.367	2.250	.219	.563	1.312	C-2122H	1.750
*C2160H	1.125	4.00	1.500	.516	2.000	3.090	3.000	.281	.750	1.750	C-2162H	2.250

*Two attachment holes stock.
One attachment hole made-to-order.

STANDARD ATTACHMENT ROLLER CHAIN

Chain Descriptions and Dimensions

Standard Straight and Bent Attachment Chain



Others	Diamond
M-35, SA1	S1 (one hole)
M-1, SK1	S2 (one hole)

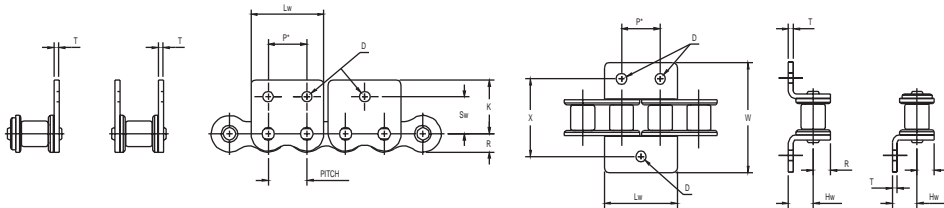
Others	Diamond
A1	B1 (one hole)
K1	B2 (one hole)

Dimensions in Inches

ASME/ANSI Number	Pitch Inches	D	H	K	L	R Max.	S	T	WI	WO	X
25	.250	.125	.180	.451	.218	.119	.308	.030	.781	.843	.562
35	.375	.102	.250	.577	.312	.178	.387	.050	1.125	1.125	.750
40	.500	.141	.312	.684	.375	.238	.489	.060	1.390	1.390	1.000
41	.500	.141	.282	.698	.375	.192	.482	.050	1.375	1.375	.937
50	.625	.203	.406	.895	.500	.297	.618	.080	1.812	1.812	1.250
60	.750	.203	.478	1.038	.625	.356	.716	.094	2.135	2.135	1.500
80	1.000	.266	.625	1.339	.750	.475	.968	.125	2.750	2.750	2.000
100	1.250	.343	.784	1.696	1.000	.594	1.233	.156	3.077	3.406	2.500
120	1.500	.386	.917	2.024	1.125	.713	1.424	.187	3.841	4.239	2.995
140	1.750	.448	1.127	2.445	1.375	.831	1.750	.220	4.361	4.826	3.500
160	2.000	.516	1.250	2.756	1.500	.950	2.007	.250	5.078	5.609	4.000

Above attachments available for multiple strand chain.

Wide Contour Straight and Bent Attachment Chain



Others	Diamond
WM-35	WCS1 (one hole)
WM-35-2	WCS1 (two holes)

Others	Diamond
WM-1	WCS2 (one hole)
WM-2	WCS2 (two holes)

Others	Diamond
WA-1	WCB1 (one hole)
WA-2, A2	WCB1 (two holes)

Others	Diamond
WK-1	WCB2 (one hole)
WK-2, K2	WCB2 (two holes)

Dimensions in Inches

ASME/ANSI Number	Pitch Inches	D	Hw	K	Lw	P	R Max.	Sw	T	W	X
*35	.375	.125	.262	.577	.727	.375	.178	.399	.050	1.105	.750
*40	.500	.141	.326	.684	.946	.500	.238	.503	.060	1.366	1.000
*41	.500	.141	.282	.698	.878	.500	.192	.482	.050	1.372	.937
*50	.625	.203	.406	.895	1.211	.625	.297	.618	.080	1.807	1.250
*60	.750	.203	.478	1.038	1.420	.750	.356	.716	.094	2.135	1.500
*80	1.000	.266	.625	1.339	1.885	1.000	.475	.967	.125	2.750	2.000
*†100	1.250	.343	.784	1.696	2.362	1.250	.594	1.233	.156	3.408	2.500
*†120	1.500	.386	.917	2.023	2.836	1.500	.713	1.424	.187	4.239	2.995

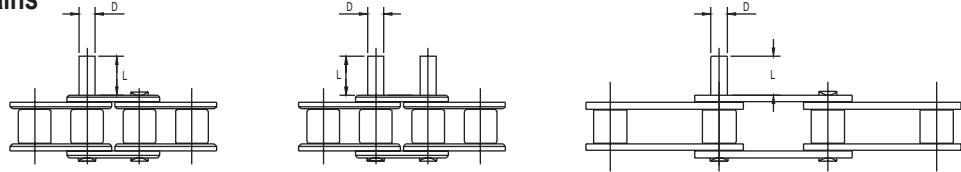
* Attachment available on pin link plate only.
† These items not available with 48-hour delivery.

Contact Diamond Chain for available attachments on roller links (wide contour).
Above attachments available for multiple strand chain.

STANDARD ATTACHMENT ROLLER CHAIN

Chain Descriptions and Dimensions

Standard Extended Pins For ASME/ANSI Standard Series Chains Double-Pitch Conveyor Chains



Others	Diamond
D1	E1 (one extended pin)
D3	E2 (two extended pins)

Dimensions in Inches

ASME/ ANSI #	Pitch Inches	D±.0005"	L±.010"	ASME ANSI #	Pitch Inches	D±.0005"	L±.010"	ASME/ANSI #	Pitch Inches	D±.0005"	L±.010"
35	.375	.141	.375	80	1.00	.312	.750	C-2040, C-2042	1.00	.156	.375
40	.500	.156	.383	100	1.25	.375	.937	C-2050, C-2052	1.25	.200	.468
41	.500	.141	.375	120	1.50	.437	1.125	C-2060H, C-2062H	1.50	.234	.562
50	.625	.200	.468	140	1.75	.500	1.312	C-2080H, C-2082H	2.00	.312	.750
60	.750	.234	.562	160	2.00	.562	1.500	C-2100H, C-2102H	2.50	.375	.937
								C-2120H, C-2122H	3.00	.437	1.125
								C-2160H, C-2162H	4.00	.562	1.500

Standard Attachment Terminology	Other Manufacturers	Diamond Terminology	Description
Single- and Double-Pitch Lugs	A1	B1 one hole	Bent attachment, one side, one hole
	A2	B1 two holes	Bent attachment, one side, two holes
	K1	B2 one hole	Bent attachment, both sides, one hole
	K2	B2 two holes	Bent attachment, both sides, two holes
	SA1, M-35	S1 one hole	Straight attachment, one side, one hole
	SA2, M-35-2	S1 two holes	Straight attachment, one side, two holes
	SK1, M-1	S2 one hole	Straight attachment, both sides, one hole
	SK2, M-2	S2 two holes	Straight attachment, both sides, two holes
Wide Contour Lugs	WM-35	WCS1 one hole	Wide contour, straight attachment, one side, one hole
	WM-35-2	WCS1 two holes	Wide contour, straight attachment, one side, two holes
	WM-1	WCS2 one hole	Wide contour, straight attachment, both sides, one hole
	WM-2	WCS2 two holes	Wide contour, straight attachment, both sides, two holes
	WA-1	WCB1 one hole	Wide contour, bent attachment, one side, one hole
	WA-2, A2	WCB1 two holes	Wide contour, bent attachment, one side, two holes
	WK-1	WCB2 one hole	Wide contour, bent attachment, both sides, one hole
	WK-2, K2	WCB2 two holes	Wide contour, bent attachment, both sides, two holes
Extended Pins	D1	E1	One pin in link extended
	D3	E2	Both pins in link extended